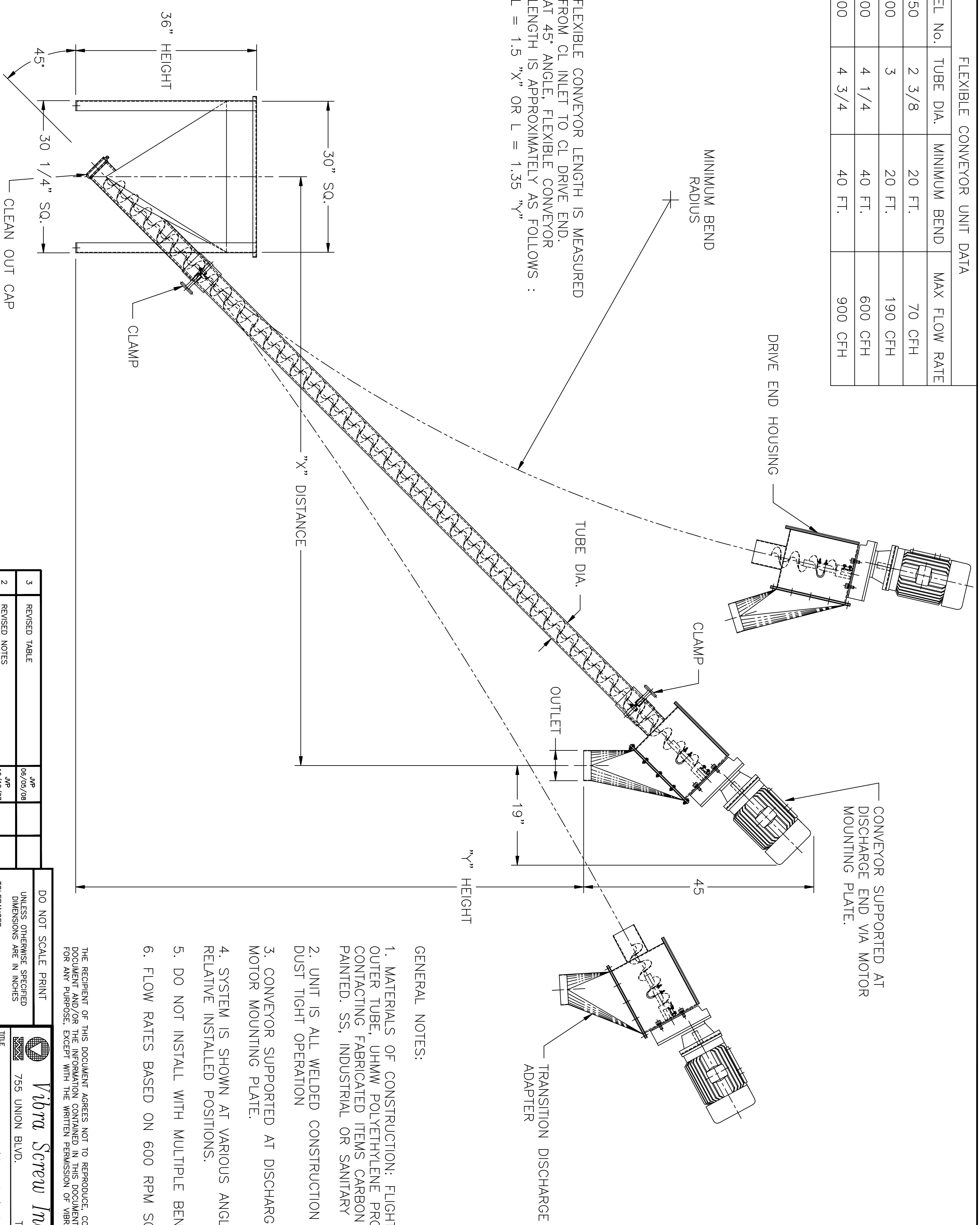


FLEXIBLE CONVEYOR UNIT DATA			
MODEL No.	TUBE DIA.	MINIMUM BEND	MAX FLOW RATE
250	2 3/8	20 FT.	70 CFH
300	3	20 FT.	190 CFH
400	4 1/4	40 FT.	600 CFH
500	4 3/4	40 FT.	900 CFH

FLEXIBLE CONVEYOR LENGTH IS MEASURED FROM CL INLET TO CL DRIVE END. AT 45° ANGLE, FLEXIBLE CONVEYOR LENGTH IS APPROXIMATELY AS FOLLOWS :
 $L = 1.5 \text{ "X"}$ OR $L = 1.35 \text{ "Y"}$



GENERAL NOTES:

1. MATERIALS OF CONSTRUCTION: FLIGHTING, CS OR SS, OUTER TUBE, UHMW POLYETHYLENE PRODUCT, CONTACTING FABRICATED ITEMS CARBON STEEL, ENAMEL PAINTED. SS, INDUSTRIAL OR SANITARY FINISH.
2. UNIT IS ALL WELDED CONSTRUCTION GASKETED FOR DUST TIGHT OPERATION
3. CONVEYOR SUPPORTED AT DISCHARGE END VIA MOTOR MOUNTING PLATE.
4. SYSTEM IS SHOWN AT VARIOUS ANGLES TO INDICATE RELATIVE INSTALLED POSITIONS.
5. DO NOT INSTALL WITH MULTIPLE BENDS.
6. FLOW RATES BASED ON 600 RPM SCREW SPEED.

THE RECIPIENT OF THIS DOCUMENT AGREES NOT TO REPRODUCE, COPY, TRANSMIT OR USE THIS DOCUMENT AND/OR THE INFORMATION CONTAINED IN THIS DOCUMENT IN WHOLE OR IN PART, FOR ANY PURPOSE, EXCEPT WITH THE WRITTEN PERMISSION OF VIBRA SCREW INCORPORATED.

REV.	DESCRIPTION	DNW. BY DATE	CHK. BY DATE	APP. BY DATE
3	REVISED TABLE	JMP 06/05/08		
2	REVISED NOTES	JMP 12/12/07		
1	ADD NOTE 6	JMP 12/11/07		
0	RELEASED FOR REFERENCE ONLY	JMP 9/27/06		

DO NOT SCALE PRINT
 UNLESS OTHERWISE SPECIFIED DIMENSIONS ARE IN INCHES
 TOLERANCES:
 .XX = ±.01
 .XXX = ±.005
 FRACTIONAL = ±1/32"
 ANGULAR = ±1/2"
 BREAK SHARP EDGES .005-.015
 ALL SMALL FILLETS .020-.040R.

Vibra Screw Incorporated
 755 UNION BLVD. TOTOWA, N.J. 07512

TITLE: **TYPICAL INSTALLATION FLEXIBLE CONVEYOR**

SCALE: NTS
 CAD FILE NAME: n:\flexfeeder\18001V

DWG. NO.: **D-18001V**

REV. NO.: **3**