

Bin Activator Insures
Even Flow Of Clay Shale
To Belt Conveyor In
Flower-Pot Manufacturing

Customer

Ceramo Company, Jackson, Missouri — one of the nation's largest manufacturers of red clay flower pots.

Problem

The Ceramo production line experienced costly delays, spillage and irregular feeding of fine-ground clay shale, enroute from the storage bin to a belt conveyor. The conventional hopper system in use at the Jackson plant was subject to severe clogging, due to bridging and ratholing of the shale. This caused inaccurate discharge of the material and frequent corrective measures to keep it moving.

Key

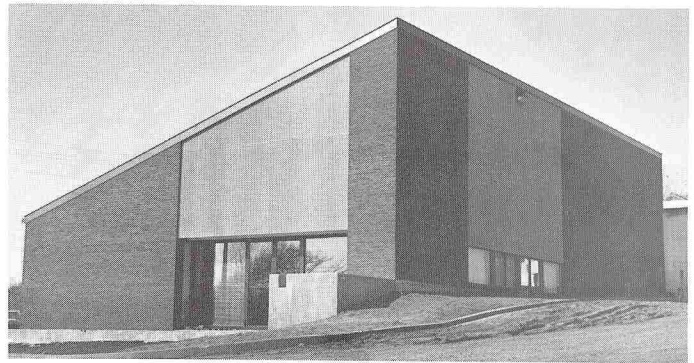
Vibra Screw Equipment
One 6 ft. diameter Vibra Screw Bin Activator

Solution

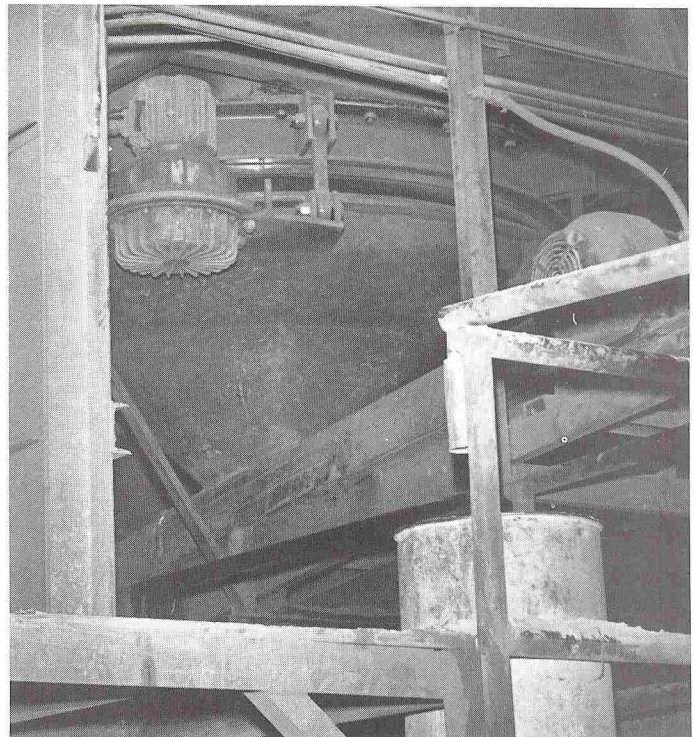
A Vibra Screw Bin Activator was installed to ensure a continuous, even flow. Flexibly hung from the upper bin by rubber fitted hanger arms, the unit is vibrated by the action of a patented gyrator assembly. Material is thrown horizontally toward the discharge outlet. A unique curved baffle arrangement transmits vibrations far up into the bin, preventing the 60 mesh clay shale from bridging and assuring an even drawdown.

Result

Ratholing, bridging, flooding and clogging have been eliminated, as has the need for manually clearing flow stoppage and product spillage. Since its installation two years ago, the Vibra Screw equipment has been faithfully discharging shale at the rate of 6 tons per hour, without any flow problems. According to Vernon Kasten, President of Ceramo Co., when new silos are installed, they will also be equipped with similar Vibra Screw Bin Activators.



Home of Ceramo Company, one of the nation's largest manufacturers of red clay flower pots.



A Vibra Screw Bin Activator helps keep fine-ground clay shale moving without the former interruptions to flow.