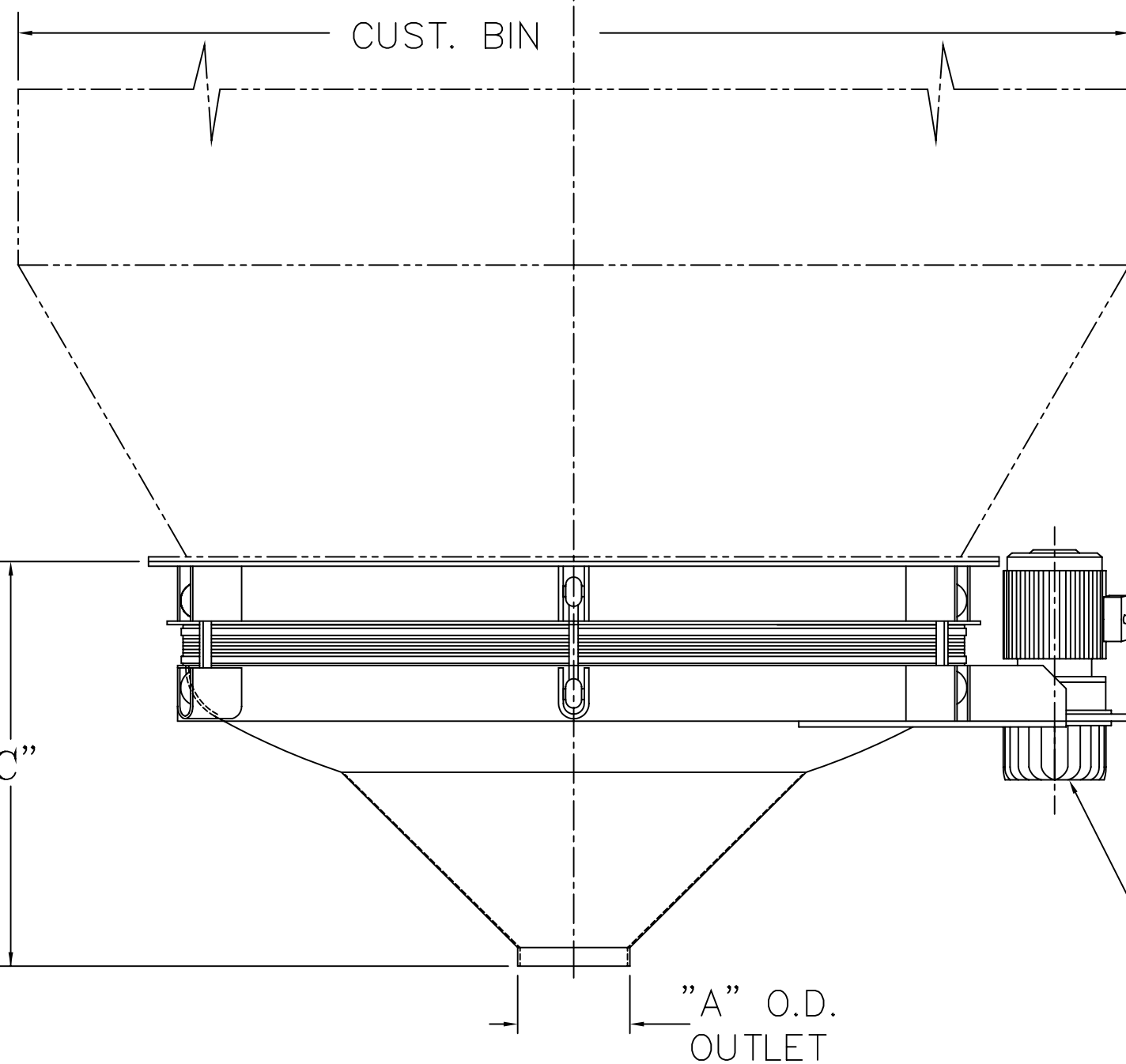
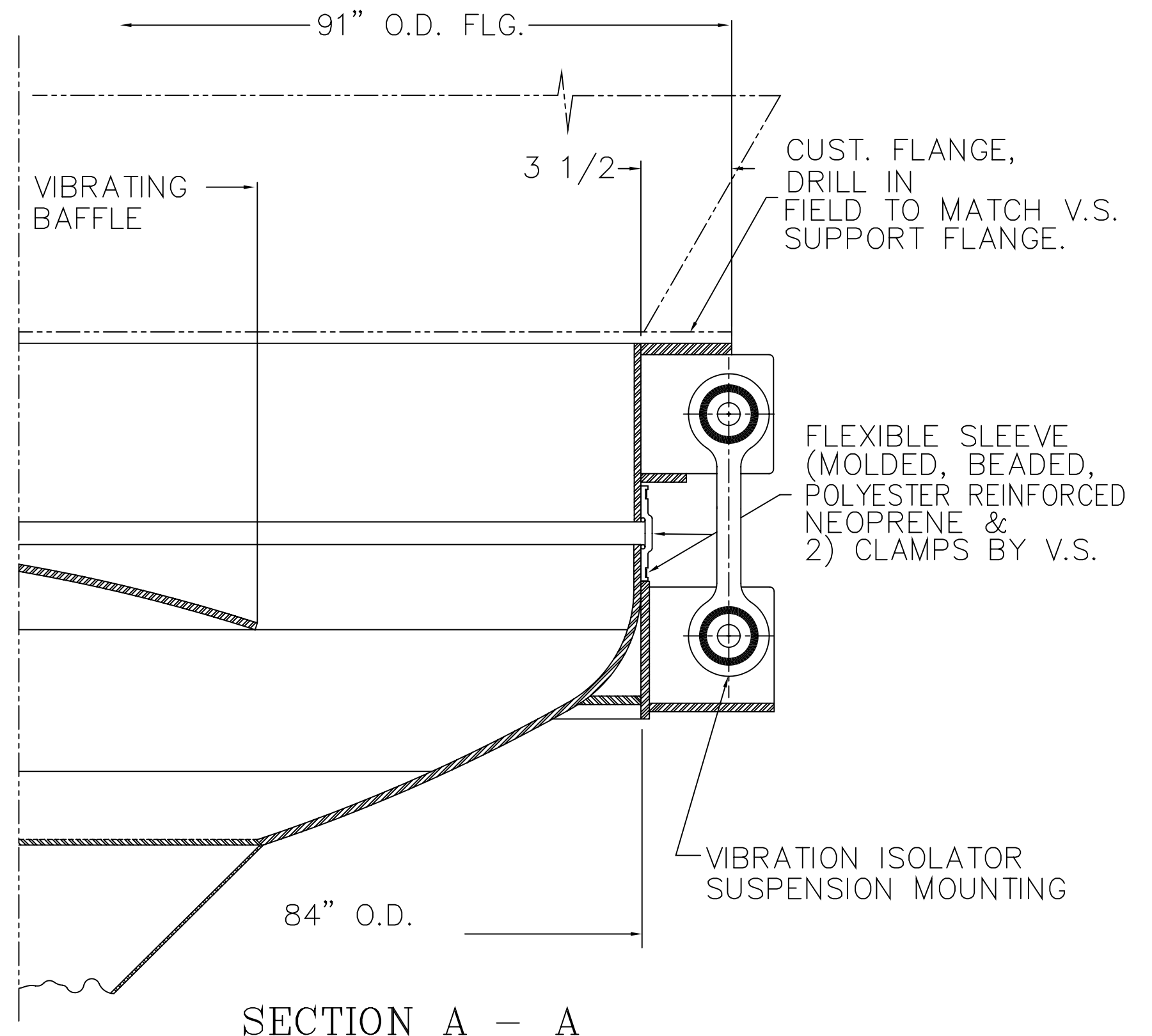
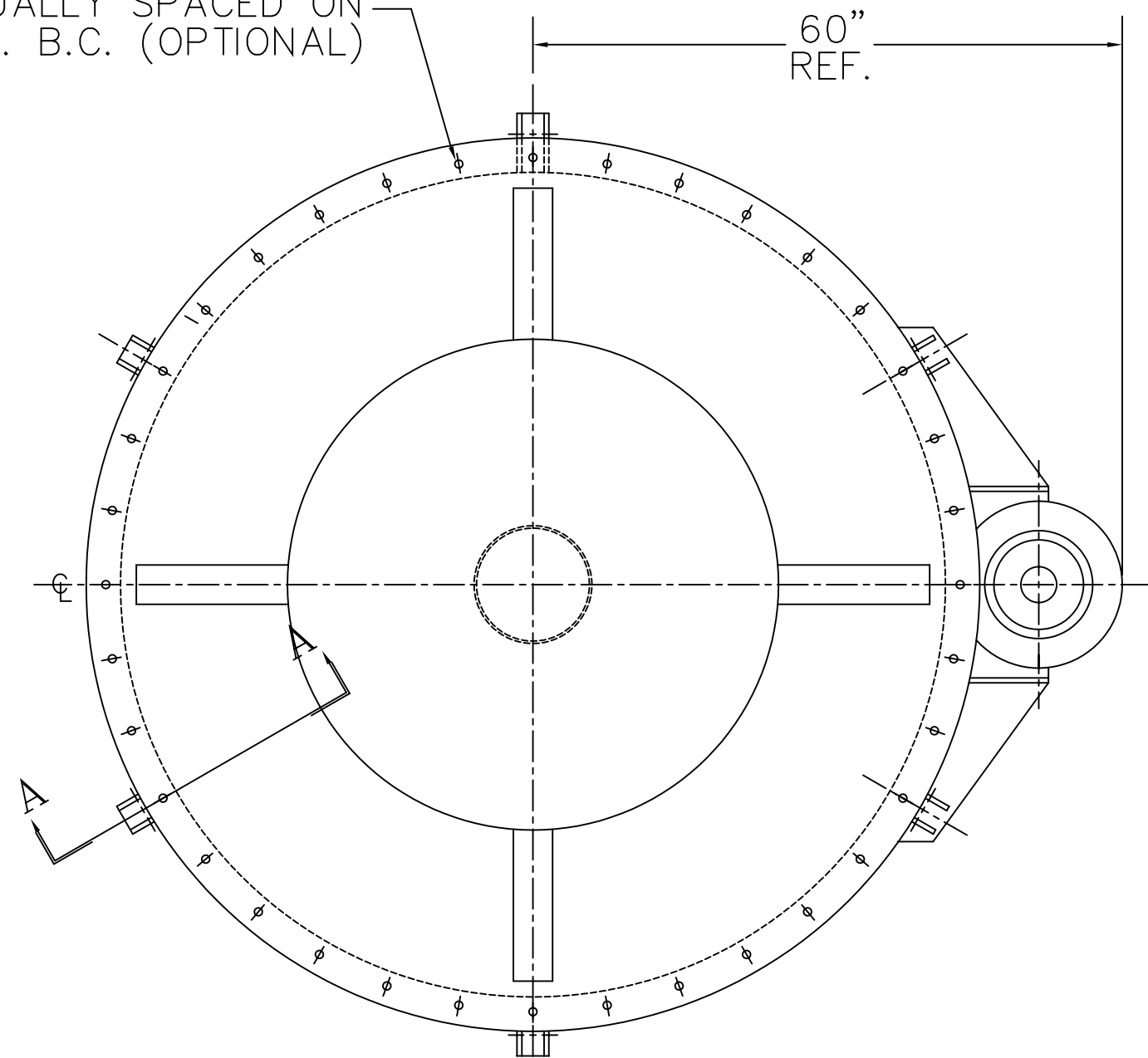


(36) 13/16" DIA. HOLES,
EQUALLY SPACED ON
87" DIA. B.C. (OPTIONAL)



"A"	"C"
8" O.D.	46"
10" O.D.	45"
12" O.D.	44"
14" O.D.	43"

NOTES:

- 1 - CONTACT MATERIAL: CARBON STEEL, 304 STAINLESS STEEL OR 316 STAINLESS STEEL.
- 3 - GYRATOR MOTOR TO BE 3HP, 1750 RPM, T.E.N.V., -OR- EXPL. PF., 230 OR 460/3/60.
- 3 - ALL ELECTRICAL CONNECTIONS TO BE FLEXIBLE.
- 4 - ALL CONNECTIONS TO BIN ACTIVATOR TO BE FLEXIBLE.

NEOPRENE COVERED CABLE,
(SO-14/4) APPROX. 6'-0" LG.
SUPPLIED BY VIBRA SCREW

VS 6K GYRATOR ASSY
(SEE NOTES 2 & 3)

THE RECIPIENT OF THIS DOCUMENT AGREES NOT TO REPRODUCE, COPY, TRANSMIT OR USE THIS DOCUMENT AND/OR THE INFORMATION CONTAINED IN THIS DOCUMENT IN WHOLE OR IN PART, FOR ANY PURPOSE, EXCEPT WITH THE WRITTEN PERMISSION OF VIBRA SCREW INCORPORATED.

<i>Vibra Screw Incorporated</i>		
755 UNION BLVD.		TOTOWA, N.J. 07512
TITLE 7'-0" DIA BIN ACTIVATOR WITH PREASSEMBLED MOUNTING RING AND OIL LUBRICATED GYRATOR		
DWN/DATE I.S. 5/02/2001	CHK. BY	DWG. NO.
CAD FILE NAME N:\BA\STDASSY\15597-SD	APP. BY	15597-SD