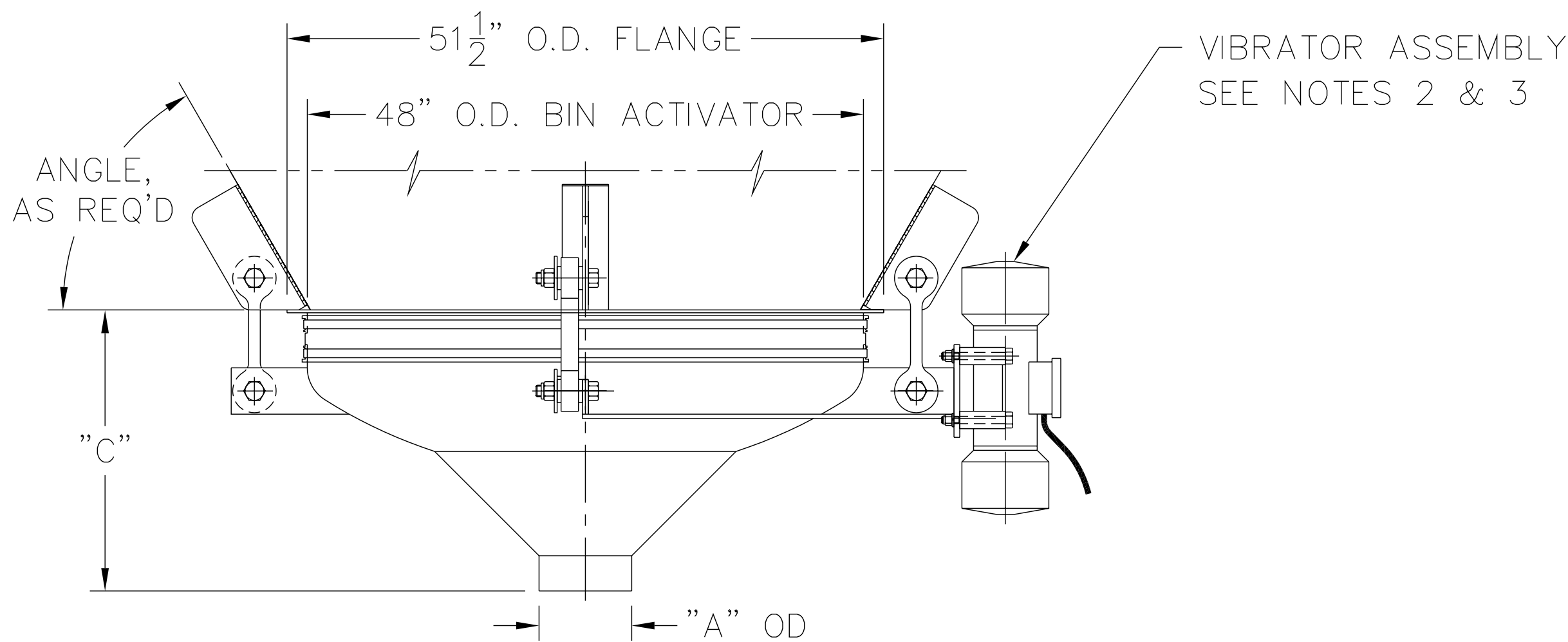


SECTION A-A



"A" O.D.	"C"
8" O.D.	24 1/4"
10" O.D.	23 1/4"
12" O.D.	22 1/4"

THE RECIPIENT OF THIS DOCUMENT AGREES NOT TO REPRODUCE, COPY, TRANSMIT OR USE THIS DOCUMENT AND/OR THE INFORMATION CONTAINED IN THIS DOCUMENT IN WHOLE OR IN PART, FOR ANY PURPOSE, EXCEPT WITH THE WRITTEN PERMISSION OF VIBRA SCREW INCORPORATED.

NOTES:

- 1 - CONTACT MATERIAL: CARBON STEEL, 304 S/S, 316 S/S.
- 2 - VIBRATOR DRIVE TO BE: T.E.N.V., 1750 RPM, 230-460/3/60.
- 3 - ALL ELECTRICAL CONNECTIONS TO BE FLEXIBLE
- 4 - ALL CONNECTIONS TO BIN ACTIVATOR MUST BE FLEXIBLE

Vibra Screw Incorporated

755 Union Blvd. Totowa, N.J. 07512-2207

TITLE

4'-0" DIA. BIN ACTIVATOR
WITH GREASED VIBRATOR

DWN. / DATE: MJM 1/23/06	DWG. NO. 16709-SD	REV. NO. 1
CAD FILE NAME N:\BA\STDASSY\16709-SD		