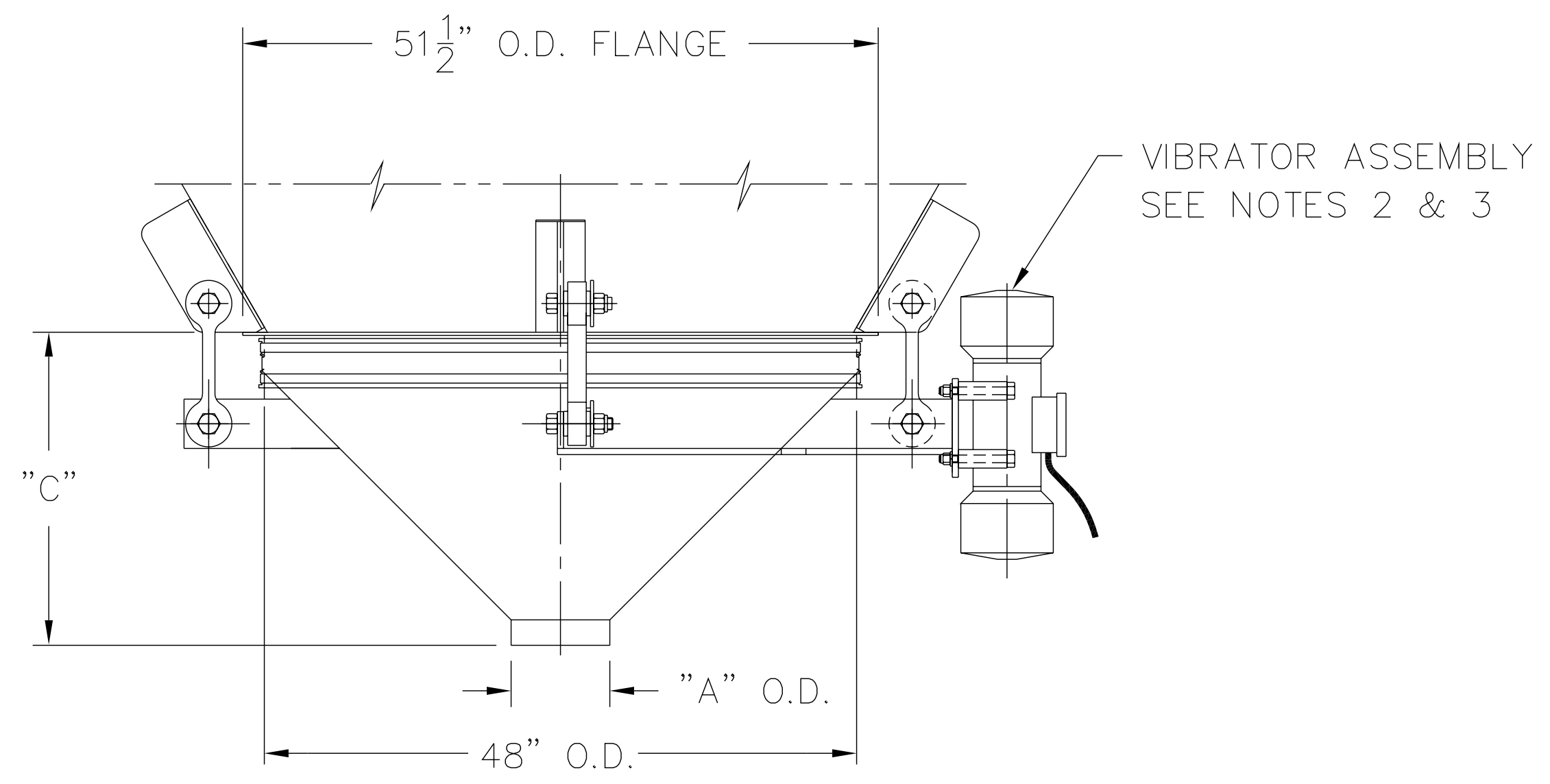


SECTION A-A



"A" O.D.	"C"
8" O.D.	25 3/8"
10" O.D.	24 3/8"
12" O.D.	23 3/8"

THE RECIPIENT OF THIS DOCUMENT AGREES NOT TO REPRODUCE, COPY, TRANSMIT OR USE THIS DOCUMENT AND/OR THE INFORMATION CONTAINED IN THIS DOCUMENT IN WHOLE OR IN PART, FOR ANY PURPOSE, EXCEPT WITH THE WRITTEN PERMISSION OF VIBRA SCREW INCORPORATED.

NOTES:

- 1 - CONTACT MATERIAL: CARBON STEEL, 304 S/S, 316 S/S.
- 2 - VIBRATOR DRIVE TO BE: T.E.N.V., 1750 RPM, 230-460/3/60.
- 3 - ALL ELECTRICAL CONNECTIONS TO BE FLEXIBLE
- 4 - ALL CONNECTIONS TO BIN DISCHARGER MUST BE FLEXIBLE

Vibra Screw Incorporated

755 Union Blvd. Totowa, N.J. 07512-2207

TITLE <p style="text-align: center; font-weight: bold;">4'-0" DIA. BIN DISCHARGER WITH GREASED VIBRATOR</p>		
DWN / DATE: <p style="text-align: center;">FP 07/01/99</p>	DWG. NO. <p style="text-align: center; font-size: 1.2em;">17799-SD</p>	DWG. NO. <p style="text-align: center; font-size: 1.2em;">1</p>
CAD FILE NAME <p style="font-size: 0.8em;">N:\BA\BD\STDASSY\17799-SD</p>		