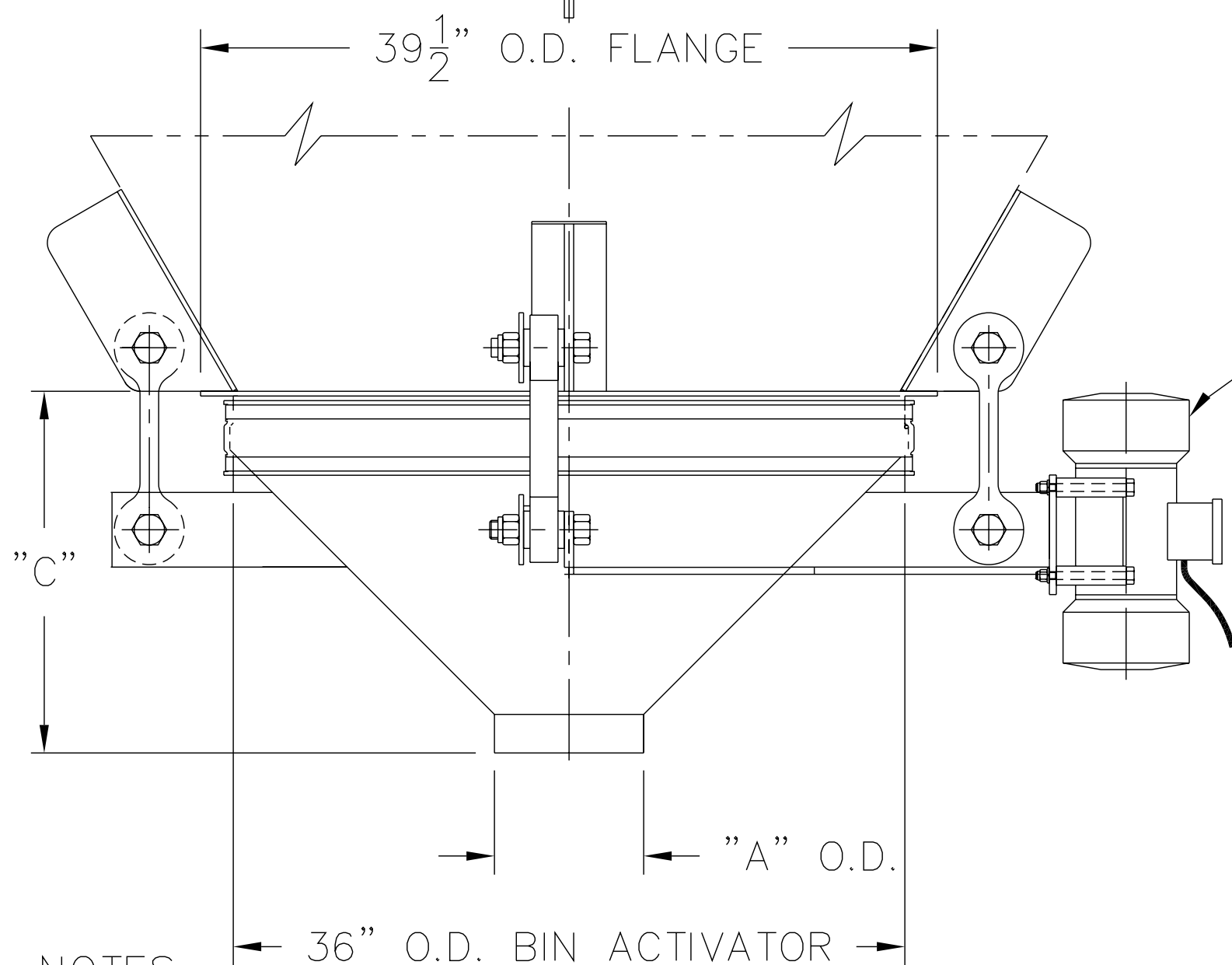


SECTION A-A



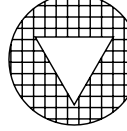
VIBRATOR ASSEMBLY
SEE NOTES 2 & 3

| "A" O.D. | "C" |
|----------|---------|
| 8" O.D. | 19 3/8" |
| 10" O.D. | 18 3/8" |
| 12" O.D. | 17 3/8" |

NOTES:

- 1 - CONTACT MATERIAL: CARBON STEEL, 304 S/S, 316 S/S.
- 2 - VIBRATOR DRIVE TO BE: T.E.N.V., 1750 RPM, 230-460/3/60.
- 3 - ALL ELECTRICAL CONNECTIONS TO BE FLEXIBLE
- 4 - ALL CONNECTIONS TO BIN DISCHARGER MUST BE FLEXIBLE

THE RECIPIENT OF THIS DOCUMENT AGREES NOT TO REPRODUCE, COPY, TRANSMIT OR USE THIS DOCUMENT AND/OR THE INFORMATION CONTAINED IN THIS DOCUMENT IN WHOLE OR IN PART, FOR ANY PURPOSE, EXCEPT WITH THE WRITTEN PERMISSION OF VIBRA SCREW INCORPORATED.

| | | |
|--|---|--|
|  Vibra Screw Incorporated 755 Union Blvd. Totowa, N.J. 07512-2207 | | |
| TITLE <p style="text-align: center;">3'-0" DIA. BIN DISCHARGER WITH GREASED VIBRATOR</p> | | |
| DWN / DATE: MJM 1/18/06 | DWG. NO. <p style="text-align: center;">17801-SD</p> | REV. NO. <p style="text-align: center;">1</p> |
| CAD FILE NAME N:\BA\BD\STDASSY\17801-SD | | |