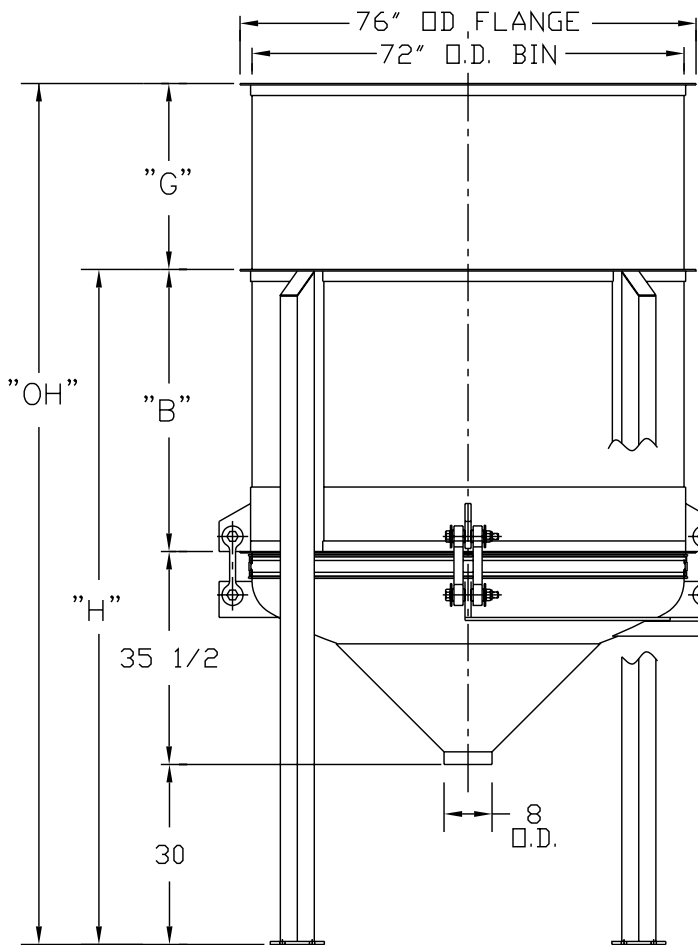


SECTION A-A



MODEL NO.	CAPACITY CU.FT.	"B"	"H"	"G"	"OH"
LBB 6-100	100	37 1/2"	103"	—	—
LBB 6-200	200	47"	112 1/2"	31"	143 1/2"
LBB 6-250	250	47"	112 1/2"	49"	161 1/2"
LBB 6-300	300	47"	112 1/2"	69"	181 1/2"

NEOPRENE COVERED CABLE (SD 14/4) APPROX. 6 FT. LG. BY VIBRA SCREW

VIBRATOR MOTOR SEE NOTE 2 & 3

NOTES:

- 1 - CONTACT MATERIAL : C.S. ,304 SS OR 316 SS
- 2 - VIBRATOR MOTOR TO BE 2 1/2 HP,230- 460 /3/60
- 3 - ALL ELECTRICAL CONNECTIONS TO BE FLEXIBLE.
- 4 - ALL CONNECTIONS TO LIVE BOTTOM BIN TO BE FLEXIBLE.

THE RECIPIENT OF THIS DOCUMENT AGREES NOT TO REPRODUCE, COPY, TRANSMIT OR USE THIS DOCUMENT AND/OR THE INFORMATION CONTAINED IN THIS DOCUMENT IN WHOLE OR IN PART, FOR ANY PURPOSE, EXCEPT WITH THE WRITTEN PERMISSION OF VIBRA SCREW INCORPORATED.

DO NOT SCALE PRINT		Vibra Screw Incorporated 755 Union Blvd. Totowa, N.J. 07512-2207	
UNLESS OTHERWISE SPECIFIED DIMENSIONS ARE IN INCHES		TITLE 6-200 TO 300 LIVE BOTTOM BIN CENTER FLAT STOCK CROSSMEMBER AND GREASED VIBRATOR	
TOLERANCES: .XX = ±.01 .XXX = ±.005 FRACTIONAL = ±1/32" ANGULAR = ±1/2" BREAK SHARP EDGES .005-.015 ALL SMALL FILLETS .020-.040R.		SCALE .75 = 12	DWG. NO. 17950C-SD
1 WEBSITE DRAWING		M/JM 6/27/01	REV. NO. 1
REV.	DESCRIPTION	DWN. BY DATE	CHK. BY DATE
		APP. BY DATE	ELEC. APP. DATE
		CAD FILE NAME LBB\ASSY\17950C STD_6_100_300	

1	WEBSITE DRAWING	M/JM	6/27/01		
REV.	DESCRIPTION	DWN. BY DATE	CHK. BY DATE	APP. BY DATE	ELEC. APP. DATE