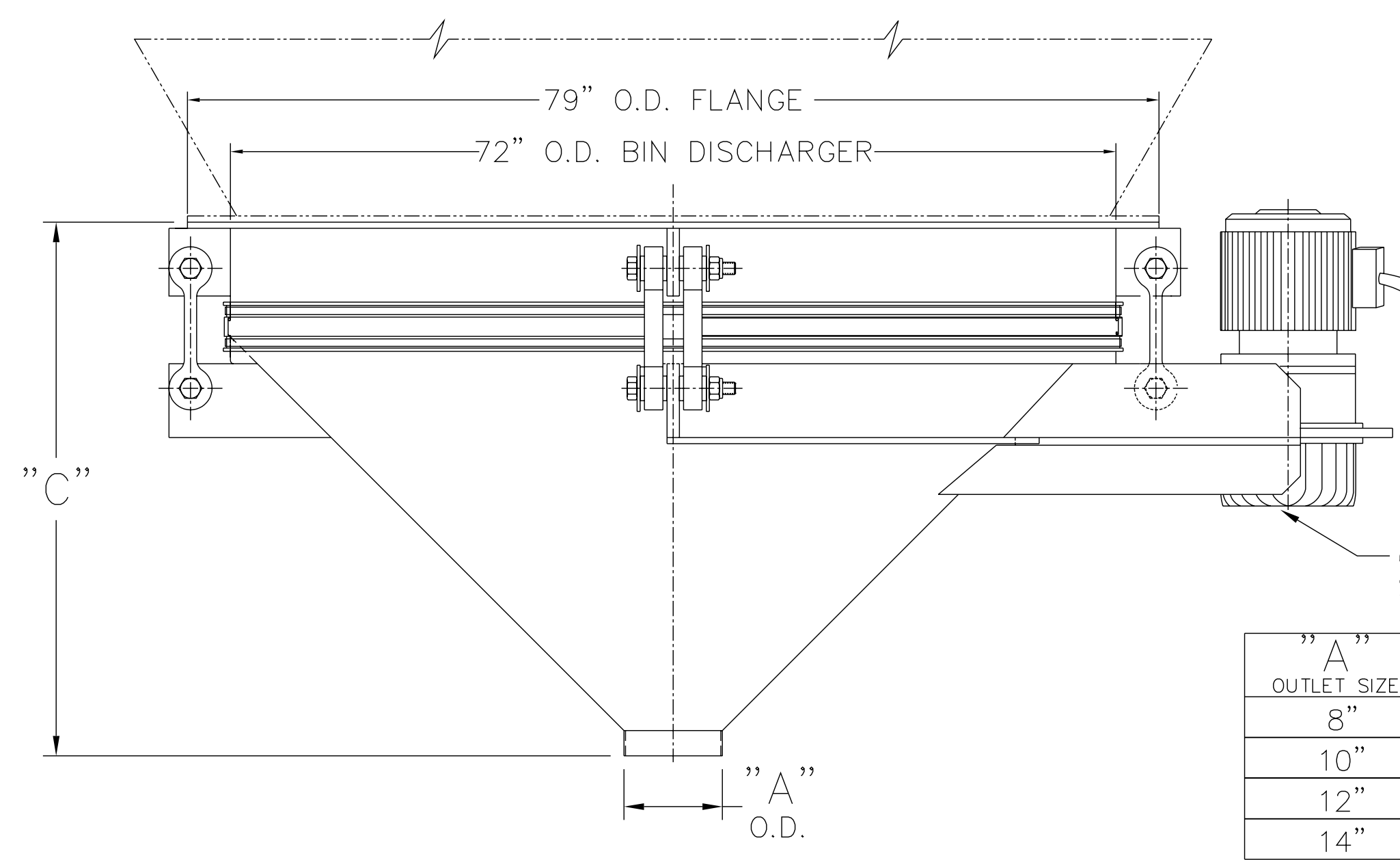


**NOTES:**

1. CONTACT MATERIAL - CARBON STEEL, 304 SS, 316 SS.
2. GYRATOR MOTOR: 3 HP, 1750 RPM,TEFC, 230 OR 460/3/60.
3. AL ELECTRICAL CONNECTIONS TO BE FLEXIBLE.
4. ALL CONNECTIONS TO BIN DISCHARGER MUST BE FLEXIBLE.



NEOPRENE COVERED CABLE  
(SO 14/4) APPROX. 6' LG.  
SUPPLIES BY V.S.

6K GYRATOR ASSY  
SEE NOTE 2 & 3

| "A"<br>OUTLET SIZE | "C"<br>OVERALL HEIGHT |
|--------------------|-----------------------|
| 8"                 | 43 3/8"               |
| 10"                | 42 3/8"               |
| 12"                | 41 3/8"               |
| 14"                | 40 3/8"               |

THE RECIPIENT OF THIS DOCUMENT AGREES NOT TO REPRODUCE, COPY, TRANSMIT OR USE THIS DOCUMENT AND/OR THE INFORMATION CONTAINED IN THIS DOCUMENT IN WHOLE OR IN PART, FOR ANY PURPOSE, EXCEPT WITH THE WRITTEN PERMISSION OF VIBRA SCREW INCORPORATED.

THIS DRAWING TO BE USED FOR REFERENCE ONLY

|   |                             |
|---|-----------------------------|
| <b>Vibra Screw Incorporated</b><br>755 Union Blvd. Totowa, N.J. 07512-2207                  |                             |
| <b>TITLE</b> 6'-0" DIA. BIN DISCHARGER<br>WITH PREASSEMBLED MOUNTING RING<br>AND 6K GYRATOR |                             |
| <b>DWN/DATE</b><br>MJM 8/22/01  | <b>DWG. NO.</b><br>17979-SD |
| <b>CAD FILE NAME</b><br>N:\BA\BD\STDASSY\17979  | <b>REV. NO.</b><br>1        |