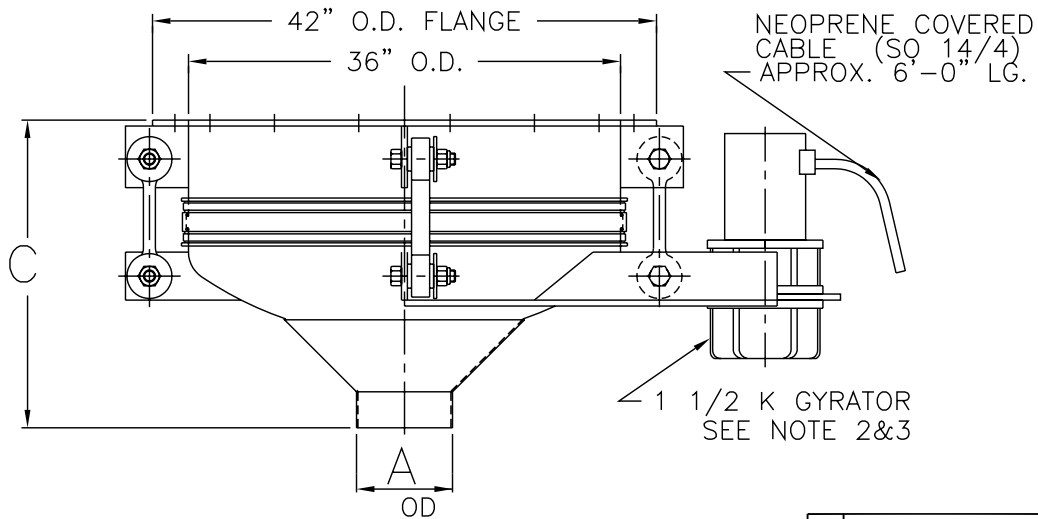


NOTES -

- 1 - CONTACT MATERIAL - CARBON STEEL, 304 SS, 316 SS
- 2 - GYRATOR MOTOR - 1 HP, TENV, 230 OR 460/3/60
- 3 - ALL ELECTRICAL CONNECTIONS TO BE FLEXIBLE
- 4 - ALL CONNECTIONS TO BIN ACTIVATOR MUST BE FLEXIBLE



DASH No.	A OD	C
-1	8 OD	25 1/2
-2	10 OD	24 1/2
-3	12 OD	23 1/2

THE RECIPIENT OF THIS DOCUMENT AGREES NOT TO REPRODUCE, COPY, TRANSMIT OR USE THIS DOCUMENT AND/OR THE INFORMATION CONTAINED IN THIS DOCUMENT IN WHOLE OR IN PART, FOR ANY PURPOSE, EXCEPT WITH THE WRITTEN PERMISSION OF VIBRA SCREW INCORPORATED.

DO NOT SCALE PRINT

UNLESS OTHERWISE SPECIFIED
DIMENSIONS ARE IN INCHES

TOLERANCES:

.xx = ±.01
.xxx = ±.005
FRACTIONAL = ±1/32"
ANGULAR = ±1/2"

BREAK SHARP EDGES .005-.015
ALL SMALL FILLETS .020-.040R.
ALL FINISHED SURFACES 63-125
MICRO INCHES



Vibra Screw Incorporated

755 Union Blvd. Totowa, N.J. 07512-2207

TITLE
3'-0" DIA. BIN ACTIVATOR
CENTER FLAT STOCK CROSS MEMBER
AND 1 1/2 K GYRATOR

SCALE
1/8"=1"

DWG. NO.

17983-SD 0

CAD FILE NAME
ba\stdassy\17983-SD

0	RELEASED FOR REFERENCE ONLY	MJM				
		8/23/01				
REV.	DESCRIPTION	DWN. BY DATE	CHK. BY DATE	APP. BY DATE	ELEC. APP. DATE	