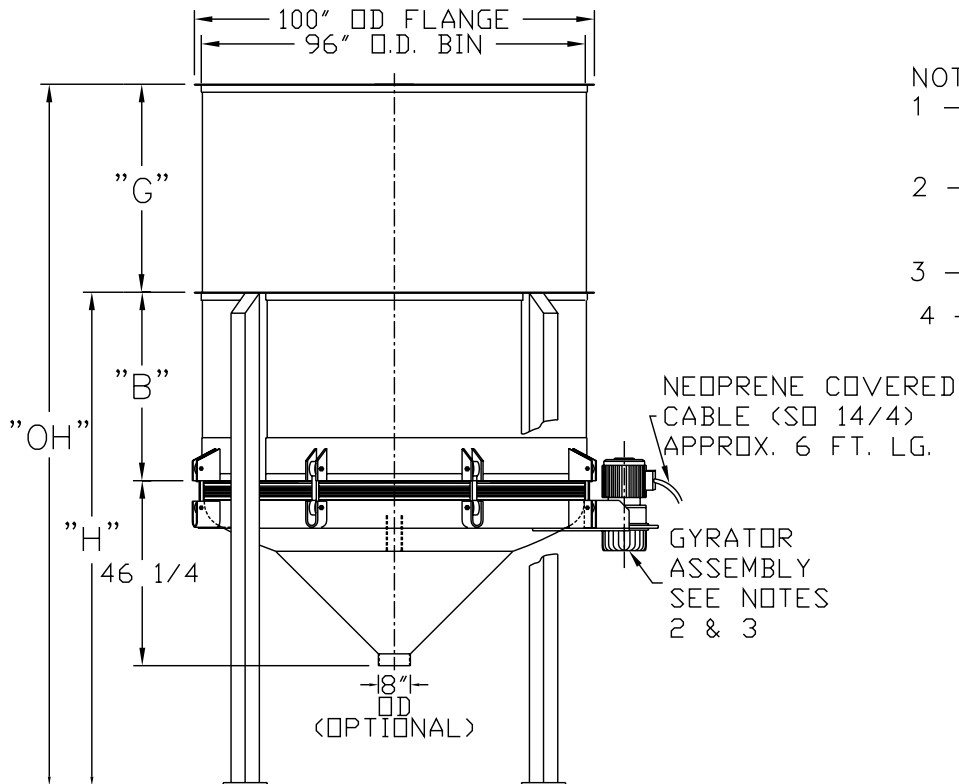


SECTION A - A



NOTES:

- 1 - CONTACT MATERIAL : CARBON STEEL, 304 OR 316 STAINLESS STEEL.
- 2 - GYRATOR MOTOR TO BE : 3 HP, 230 - 460/3/60, TEFC, 1750 RPM
- 3 - ALL ELECTRICAL CONNECTIONS TO BE FLEXIBLE.
- 4 - ALL CONNECTIONS TO LIVE BOTTOM BIN TO BE FLEXIBLE.

MODEL NO.	CAPACITY CU.FT.	"B"	"H"	"G"	"OH"
LBB 8-400	400	47"	123 1/4"	31"	154 1/4"
LBB 8-400	400	47"	123 1/4"	52"	175 1/4"
LBB 8-400	400	47"	123 1/4"	115"	238 1/4"

THE RECIPIENT OF THIS DOCUMENT AGREES NOT TO REPRODUCE, COPY, TRANSMIT OR USE THIS DOCUMENT AND/OR THE INFORMATION CONTAINED IN THIS DOCUMENT IN WHOLE OR IN PART, FOR ANY PURPOSE, EXCEPT WITH THE WRITTEN PERMISSION OF VIBRA SCREW INCORPORATED.

DO NOT SCALE PRINT

UNLESS OTHERWISE SPECIFIED DIMENSIONS ARE IN INCHES

TOLERANCES:  
 .XX = ±.01  
 .XXX = ±.005  
 FRACTIONAL = ±1/32"  
 ANGULAR = ±1/2"  
 BREAK SHARP EDGES .005-.015  
 ALL SMALL FILLETS .020-.040R.



Vibra Screw Incorporated  
 755 Union Blvd. Totowa, N.J. 07512-2207

TITLE 8-400 TO 750 LIVE BOTTOM BIN  
 400, 500 AND 750 CU.FT.  
 AND 6 K GYRATOR

SCALE 1/2=12

CAD FILE NAME LBB\ASSY\17993-SD\_8\_400T0750\_6K

DWG. NO. 17993-SD  
 REV. NO. 1

REV.	DESCRIPTION	DWN. BY DATE	CHK. BY DATE	APP. BY DATE	ELEC. APP. DATE
1	WEBSITE DRAWING	MJM 8/30/01			