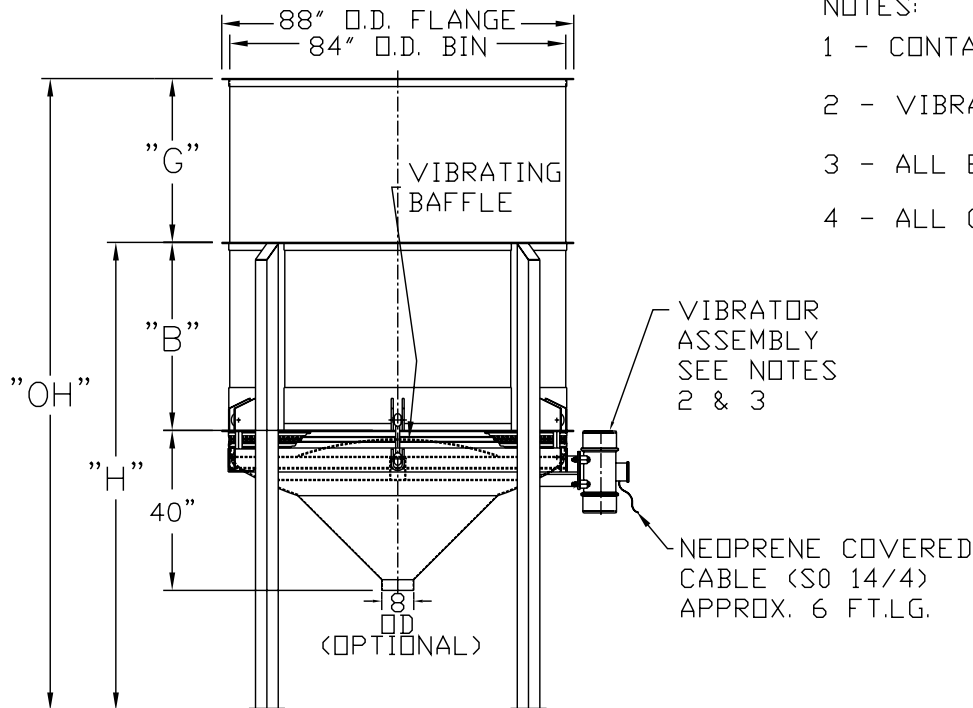


SECTION A - A

NOTES:

- 1 - CONTACT MATERIAL: CARBON STEEL, 304 OR 316 STAINLESS STEEL.
- 2 - VIBRATOR MOTOR TO BE: 2 1/2 HP, 230 - 460/3/60, TEFC, 1750 RPM.
- 3 - ALL ELECTRICAL CONNECTIONS TO BE FLEXIBLE.
- 4 - ALL CONNECTIONS TO LIVE BOTTOM BIN TO BE FLEXIBLE.



MODEL NO.	CAPACITY CU.FT.	"B"	"H"	"G"	"OH"
LBB 7-300	300	47"	117"	41"	158"
LBB 7-350	350	47"	117"	55"	172"
LBB 7-400	400	47"	117"	69"	186"

THE RECIPIENT OF THIS DOCUMENT AGREES NOT TO REPRODUCE, COPY, TRANSMIT OR USE THIS DOCUMENT AND/OR THE INFORMATION CONTAINED IN THIS DOCUMENT IN WHOLE OR IN PART, FOR ANY PURPOSE, EXCEPT WITH THE WRITTEN PERMISSION OF VIBRA SCREW INCORPORATED.

DO NOT SCALE PRINT

UNLESS OTHERWISE SPECIFIED DIMENSIONS ARE IN INCHES

TOLERANCES:
 .XX = ±.01
 .XXX = ±.005
 FRACTIONAL = ±1/32"
 ANGULAR = ±1/2"
 BREAK SHARP EDGES .005-.015
 ALL SMALL FILLETS .020-.040R.
 ALL FINISHED SURFACES 63-125 MICRO INCHES

Vibra Screw Incorporated
 755 Union Blvd. Totowa, N.J. 07812-2207

TITLE 7 - 300 TO 400 LIVE BOTTOM BIN 300, 350 AND 400 CU. FT. AND GREASED VIBRATOR

SCALE 1/2=12

DWG. NO. 17994-SD

REV. NO. 1

CAD FILE NAME LBBVASSY\17994-SD_7_300T0400_6K

REV.	DESCRIPTION	DWN. BY DATE	CHK. BY DATE	APP. BY DATE	ELEC. APP. DATE
1	WEBSITE DRAWING	MJM 8/31/01			