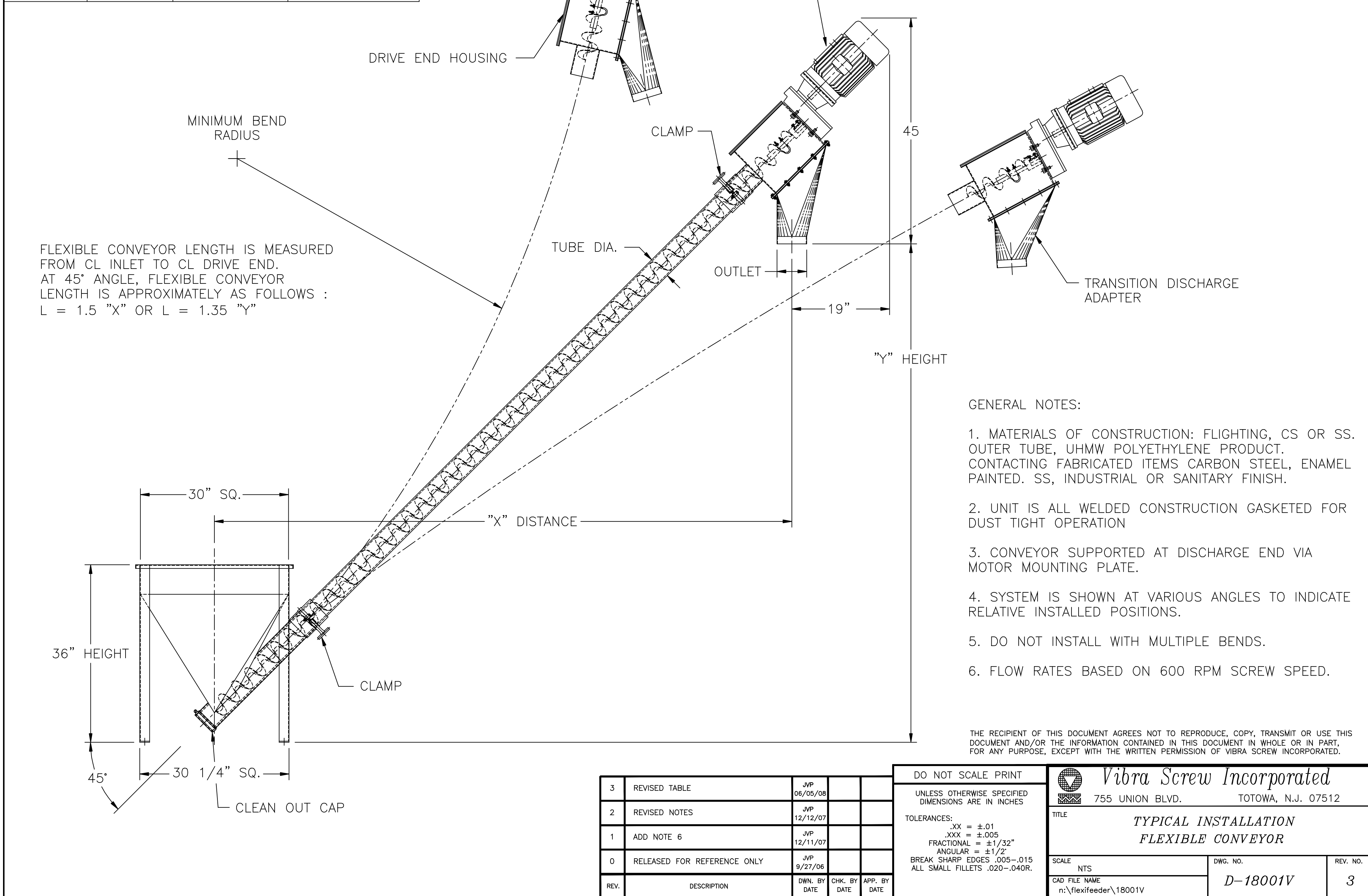


FLEXIBLE CONVEYOR UNIT DATA			
MODEL No.	TUBE DIA.	MINIMUM BEND	MAX FLOW RATE
250	2 3/8	20 FT.	70 CFH
300	3	20 FT.	190 CFH
400	4 1/4	40 FT.	600 CFH
500	4 3/4	40 FT.	900 CFH



- GENERAL NOTES:
1. MATERIALS OF CONSTRUCTION: FLIGHTING, CS OR SS. OUTER TUBE, UHMW POLYETHYLENE PRODUCT. CONTACTING FABRICATED ITEMS CARBON STEEL, ENAMEL PAINTED. SS, INDUSTRIAL OR SANITARY FINISH.
 2. UNIT IS ALL WELDED CONSTRUCTION GASKETED FOR DUST TIGHT OPERATION
 3. CONVEYOR SUPPORTED AT DISCHARGE END VIA MOTOR MOUNTING PLATE.
 4. SYSTEM IS SHOWN AT VARIOUS ANGLES TO INDICATE RELATIVE INSTALLED POSITIONS.
 5. DO NOT INSTALL WITH MULTIPLE BENDS.
 6. FLOW RATES BASED ON 600 RPM SCREW SPEED.

THE RECIPIENT OF THIS DOCUMENT AGREES NOT TO REPRODUCE, COPY, TRANSMIT OR USE THIS DOCUMENT AND/OR THE INFORMATION CONTAINED IN THIS DOCUMENT IN WHOLE OR IN PART, FOR ANY PURPOSE, EXCEPT WITH THE WRITTEN PERMISSION OF VIBRA SCREW INCORPORATED.

3	REVISED TABLE	JVP	06/05/08		
2	REVISED NOTES	JVP	12/12/07		
1	ADD NOTE 6	JVP	12/11/07		
0	RELEASED FOR REFERENCE ONLY	JVP	9/27/06		
REV.	DESCRIPTION	DWN. BY	CHK. BY	APP. BY	DATE

DO NOT SCALE PRINT

UNLESS OTHERWISE SPECIFIED DIMENSIONS ARE IN INCHES

TOLERANCES:
 .XX = ±.01
 .XXX = ±.005
 FRACTIONAL = ±1/32"
 ANGULAR = ±1/2"
 BREAK SHARP EDGES .005-.015
 ALL SMALL FILLETS .020-.040R.

Vibra Screw Incorporated 755 UNION BLVD. TOTOWA, N.J. 07512	
TITLE TYPICAL INSTALLATION FLEXIBLE CONVEYOR	
SCALE NTS	DWG. NO. D-18001V
CAD FILE NAME n:\flexifeeder\18001V	REV. NO. 3