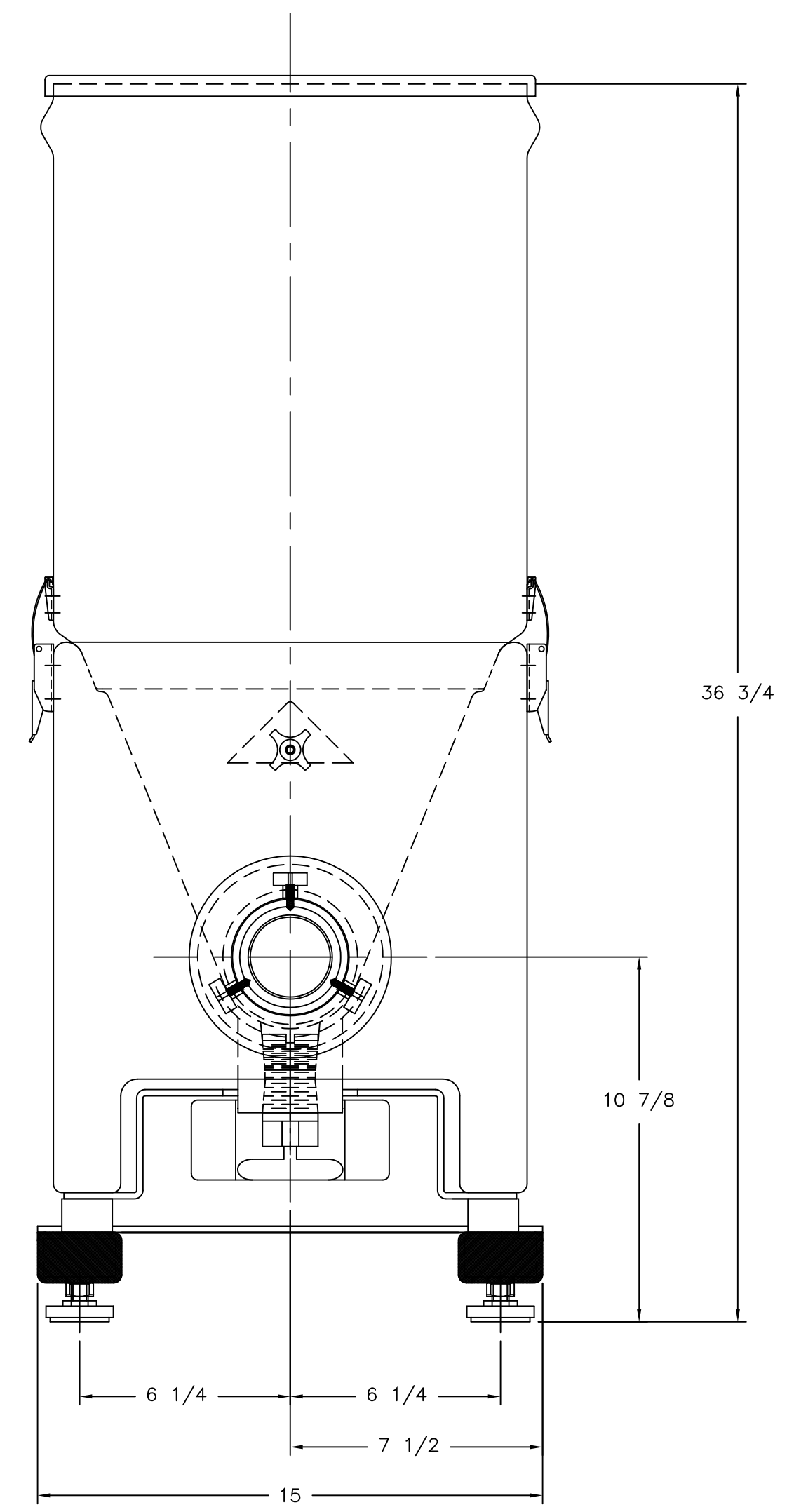
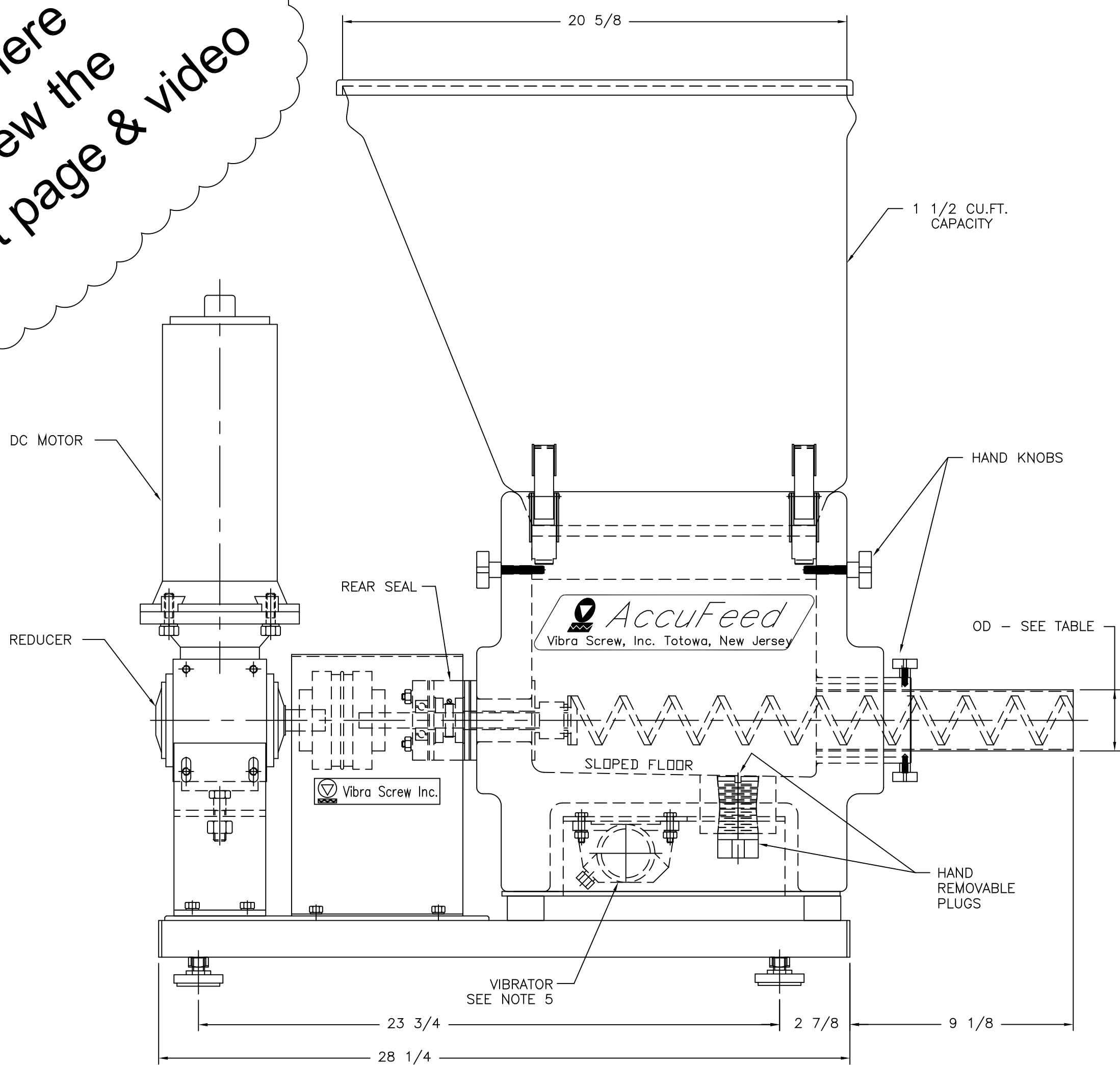


Click here  
to view the  
Product page & video



- NOTES -
- CONTACT MATERIAL - POLYETHYLENE, SCREW & TUBE - 304 SS
  - DRIVE MOTOR - 1/2 HP, TENV, 1750 RPM, 90 VA PERMANENT MAGNET DC MOTOR, 56 C-FACE, BALDOR No. CDP-3330 OR EQUAL
  - SPEED REDUCER - OHIO/GROVE MODEL #BMQ-818-10-R-56, 10:1 RATIO
  - CONTROLLER - STD. SCR CONTROLLER IN NEMA 4 ENCLOSURE, 115V/1/60HZ. INPUT
  - VIBRATOR - MODEL No. VBM-2/M, 3600 RPM, 115V/1/60HZ.
  - CARBON STEEL SURFACES TO BE PAINTED W/ STD. V.S. WHITE ENAMEL

SCREW SIZE	TUBE OD
1/2"	3/4"
5/8"	7/8"
3/4"	1.050"
1"	1 1/2"
1 1/2"	2"
2"	2 1/2"

THE RECIPIENT OF THIS DOCUMENT AGREES NOT TO REPRODUCE, COPY, TRANSMIT OR USE THIS DOCUMENT AND/OR THE INFORMATION CONTAINED IN THIS DOCUMENT IN WHOLE OR IN PART, FOR ANY PURPOSE, EXCEPT WITH THE WRITTEN PERMISSION OF VIBRA SCREW INCORPORATED.

0	RELEASED FOR REFERENCE ONLY	JVP	6/3/14		
REV.	DESCRIPTION	DWN. BY	DATE	CHK. BY	APP. BY
		DATE	DATE	DATE	DATE

DO NOT SCALE PRINT  
UNLESS OTHERWISE SPECIFIED DIMENSIONS ARE IN INCHES  
TOLERANCES:  
.XX = ±.01  
.XXX = ±.005  
FRACTIONAL = ±1/32"  
ANGULAR = ±1/2"  
BREAK SHARP EDGES .005-.015  
ALL SMALL FILLETS .020-.040R.  
ALL FINISHED SURFACES 63-125 MICRO INCHES

<b>Vibra Screw Incorporated</b> 755 Union Blvd. Totowa, N.J. 07512-2207	
TITLE <b>1/2" THRU 2" AccuFeed FEEDER</b> STANDARD DIMENSIONS	
SCALE 1/4"=1"	DWG. NO. AF-C-17687B
CAD FILE NAME N:\FEEDER\SCREW\AF\STDASSM\17687B	REV. NO. 0