

# VIBRA SCREW, INC.

## ENGINEERING DATA SHEET

### VARIABLE RATE BULK BAG UNLOADER \*

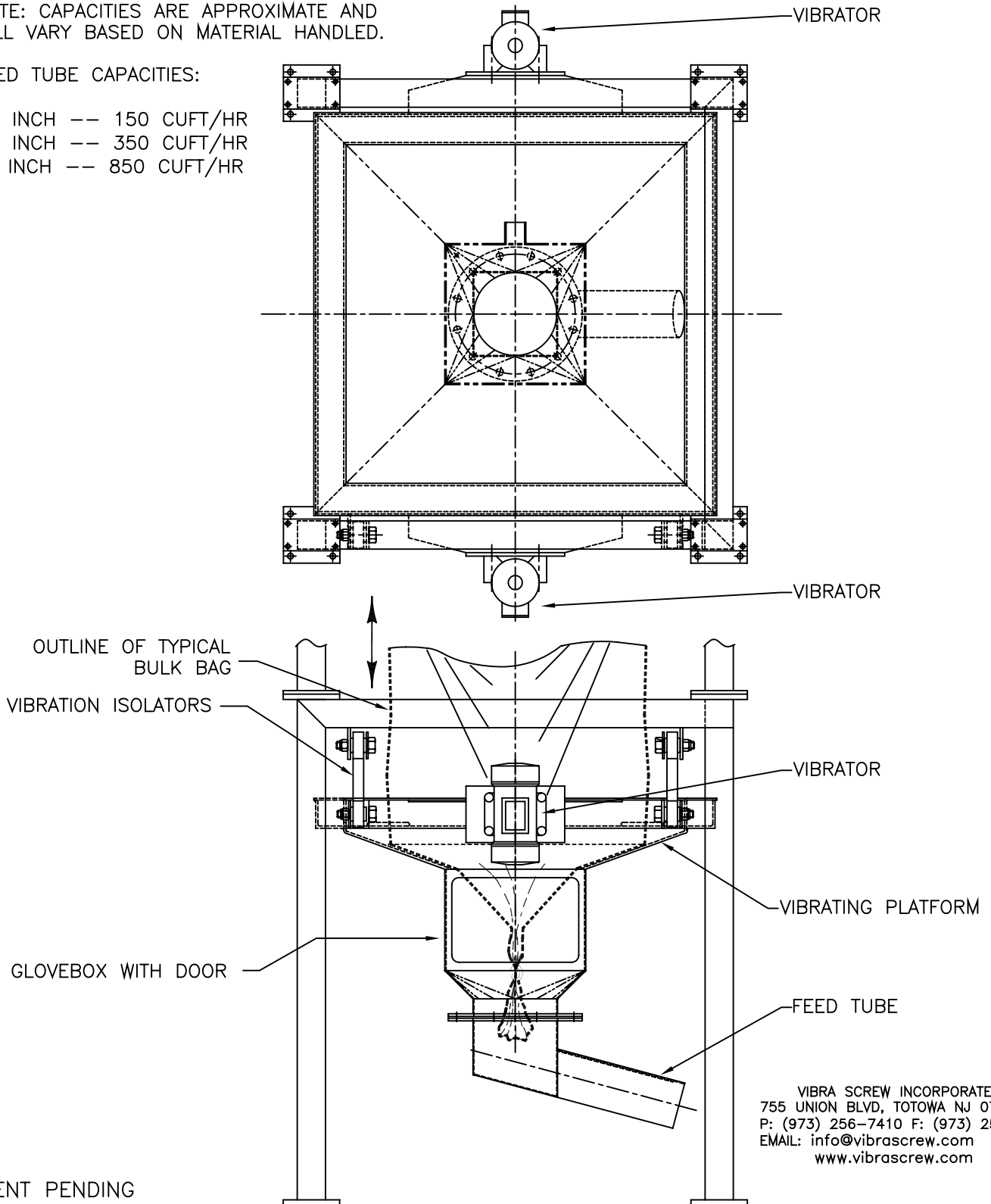
DOCUMENT NO. S146  
REV. 0 DATE: 01/11/2006  
N:\P\P-1874

THE VARIABLE RATE BULK BAG UNLOADER PROVIDES THE ABILITY TO REGULATE OR STOP FLOW FROM BULK BAGS WITHOUT THE NEED FOR A SEPARATE FEEDER OR VALVE. TWO VIBRATORS MOUNTED ON OPPOSITE SIDES OF THE UNLOADER'S SUPPORT HOPPER CREATE MOVEMENT OF MATERIAL THROUGH AN INTEGRAL SEALED FEED TUBE. WHEN VIBRATION IS STOPPED, BAG DISCHARGE AND MATERIAL FEED IMMEDIATELY CEASE. DURING DISCHARGE, FEED RATE CAN BE PRE-SET TO A CONSTANT RATE OR VARIED WITH AN OPTIONAL INVERTER CONTROL.

NOTE: CAPACITIES ARE APPROXIMATE AND WILL VARY BASED ON MATERIAL HANDLED.

FEED TUBE CAPACITIES:

- 6 INCH -- 150 CUFT/HR
- 8 INCH -- 350 CUFT/HR
- 10 INCH -- 850 CUFT/HR



\* PATENT PENDING

VIBRA SCREW INCORPORATED  
755 UNION BLVD, TOTOWA NJ 07511  
P: (973) 256-7410 F: (973) 256-7567  
EMAIL: info@vibrascrew.com  
www.vibrascrew.com