

# VIBRA SCREW INC.

## AccuFeed Screw Feeder



**Vibra Screw® Inc.**

AccuFeed Volumetric Feeder

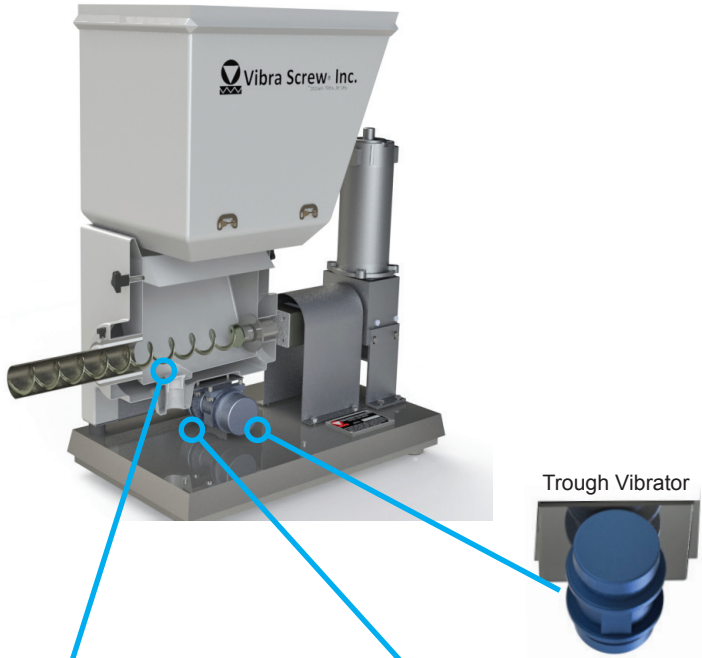
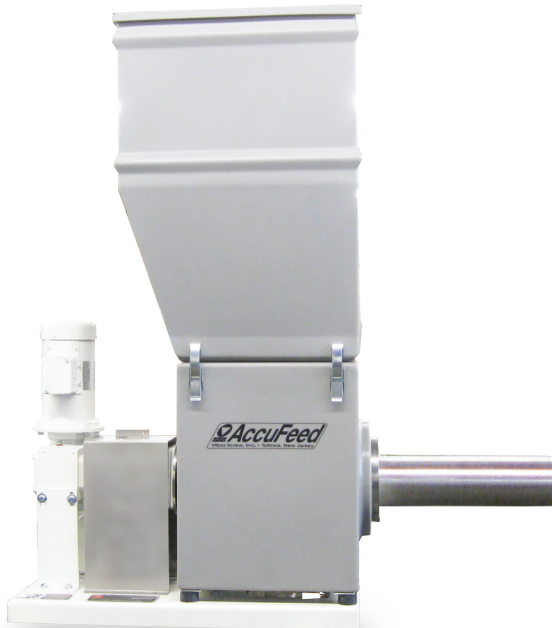
Easy Clean, Washable Design

All AccuFeeds are designed as standard with molded components for quick no tools disassembly. Models 2 inch screw size and smaller additionally include an easy clean feed trough with built in drain and external connection so the unit can be washed down in place. Contact materials are USDA and FDA approved polyethylene and stainless steel for sanitary compliance. The unit is ideal for food processors or anywhere that frequent, thorough cleaning is required.

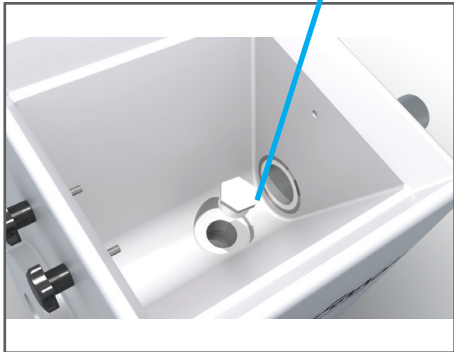
AccuFeed™ is available in interchangeable 1/2" to 6" screw sizes for feed rates to 600 ft³/hr.

Modular, Versatile Design

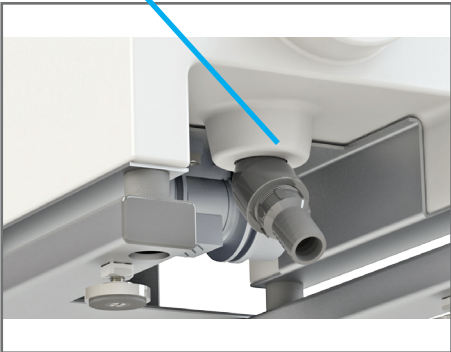
You can expect accuracies of ± 1-2% whether you feed pellets, flakes, powders or fibers. Free-flowing or tough-to-handle materials are all within the capabilities of AccuFeed™. This new feeder utilizes Vibra Screw's proven modular design, enabling a single feeder to adapt to the broadest range of feeding applications. The base feeder features a static hopper, trough and feed screw for free flowing materials. A secondary trough-conditioning screw can be used for difficult materials, or Vibra Screw's controlled vibration design can be used for even tougher-to-handle materials. The AccuFeed™ permits selection of the most economical design for an initial application and offers the ability to upgrade the design as materials or characteristics change.



Trough Vibrator



Built in Drain



External Drain Connection

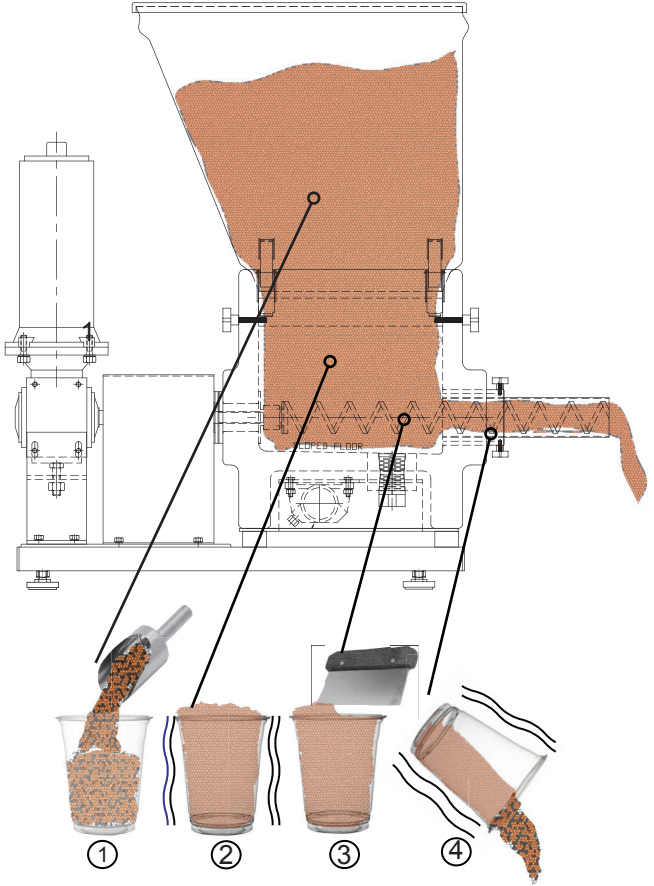
How Controlled Vibration Improves Your Operation

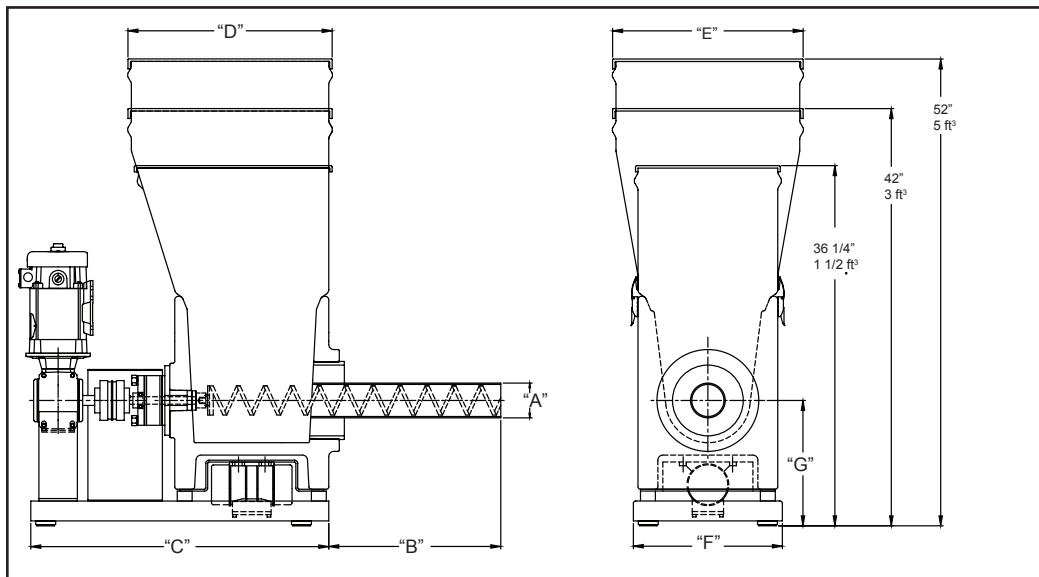
The operating principle of a vibrating Screw Feeder can be compared with the repetitive filling and emptying of cups. Most accurate filling occurs when the cup is filled with material (1), vibrated to obtain uniform density (2), and the excess struck off (3). On emptying (4), vibrating the cup also ensures complete release of the material.

In our vibrating Screw Feeders, the same process occurs. Material fills the screw flights in the trough area (1), is vibrated to a uniform density (2), and is struck off (3) as it enters the metering tube. Vibration of the metering tube and screw (4) ensures complete release of material at the discharge end.

Successive weighing of material samples will show volumetric accuracies of ± 1%. The Loss-In-Weight controller easily refines this; providing gravimetric accuracies as great as ± ¼%.

The vibration also greatly reduces feed pulsation. At discharge, it produces a precise cutoff of flow at the end of the batch cycle without material overrun. Irregular free-fall of material overrun is the greatest source of batching error. The controlled vibrating Feeder eliminates this error and greatly enhances accuracy.





**AccuFeed DIMENSIONS and FEED RATES**

Screw dia	"A" O.D	"B"	"C"	"D"	"E"	"F"	"G"	CAP FT³	FT³/Hr	M³/Hr
1/2"	3/4"	9 1/4"	27"	20 5/8"	14 1/16"	15"	10 1/8"	1.5	0.24	0.007
5/8"	7/8"	9 1/4"	27"	20 5/8"	14 1/16"	15"	10 1/8"	1.5	0.52	0.01
3/4"	1.05"	9 1/4"	27"	20 5/8"	14 1/16"	15"	10 1/8"	1.5	1	0.03
1"	1 1/2"	9 1/4"	27"	20 5/8"	14 1/16"	15"	10 1/8"	1.5	2.8	0.1
1 1/2"	2"	9 1/4"	27"	20 5/8"	14 1/16"	15"	10 1/8"	1.5	8.8	0.2
2"	2 1/2"	9 1/4"	27"	20 5/8"	14 1/16"	15"	10 1/8"	1.5	23	0.6
3"	3 1/2"	9 1/4"	30"	20 5/8"	19 3/16"	15"	12 5/8"	3	74	2.0
3"	3 1/2"	17 5/16	30"	20 5/8"	19 3/16"	15"	12 5/8"	5	74	2.0
4"	4 1/2"	17 5/16	30"	20 9/16"	19 3/16"	15"	12 5/8"	3	200	6.0
4"	4 1/2"	17 5/16	30"	20 9/16"	19 3/16"	15"	12 5/8"	5	200	6.0
6"	6 5/8"	17 5/16	30"	20 9/16"	19 3/16"	15"	12 5/8"	3	600	17.0
6"	6 5/8"	17 5/16	30"	20 9/16"	19 3/16"	15"	12 5/8"	5	600	17.0

**\* NOTE: Screw sizes 2" and smaller use easy clean feed trough with drain**

### SPECIFICATION

#### Contact Materials

- Polyethylene
- 304 Stainless Steel

#### External Support Brackets

- Carbon Steel

#### Coatings

- Standard external-enamel
- Optional external-epoxy

#### Drives

- DC/ SCR TEFC 115/1/60
- AC Inverter Duty / VFD 460/3/60
- Explosion Proof optional

#### Sanitary Applications

- Food Grade Gaskets and seals
- Guards, covers held with hand fasteners



**VIBRA SCREW INC.**

**755 Union Blvd , Totowa, NJ 07512**

**Ph: 973-256-7410 Fax: 973-256-2114**

**www.VibraScrew.com**

### THE VIBRA SCREW GUARANTEE

If your Vibra Screw equipment doesn't perform in the service for which it was sold, we'll refund your money. Ask any other equipment manufacturer to put that in writing.

**No time limits. No conditions.**