



VIBRA SCREW INC.

The most trusted name in dry solids processing.

755 Union Boulevard Totowa, New Jersey 07512
Phone: 973-256-7410 Fax: 973-256-2114 www.VibraScrew.com

BIN DISCHARGERS



The Bin Discharger

Today's Process Industries most often rely on Vibra Screw bin discharge devices to move dry bulk materials out of storage – on demand. Properly applied, Vibra Screw Bin Dischargers eliminate bridging and ratholing, reduce segregation and promote mass flow. They are efficient, convenient and economical and attach easily to any bin or silo, whether existing or new.

Vibra Screw invented this type of equipment almost 50 years ago. Since we continue extensive research into bin flow problems and solutions, we offer you an extensive range of experience. There are more Vibra Screw Bin Dischargers in service than all other brands combined. If you have a tough problem we can show you how we have solved it!

THE VIBRA SCREW GUARANTEE

If your Vibra Screw equipment doesn't perform in the service for which it was sold, we'll refund your money. Ask any other equipment manufacturer to put that in writing.

No time limits. No conditions.

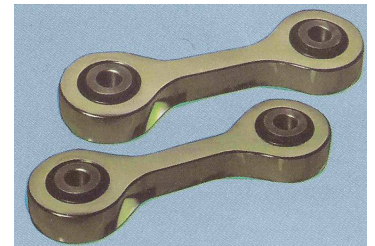
Exclusive Features result in Performance And Reliability Unequaled by any other Bin Discharge Device

Vibra Screw's line of dependable and economical Bin Dischargers are available to system suppliers and OEM's. These units are ruggedly built, simple to install and come with Vibra Screw's unconditional performance guarantee. Our Bin Discharger's simple, compact design incorporates all of the important features customers have come to expect from Vibra Screw.

Forged Hanger Suspension System

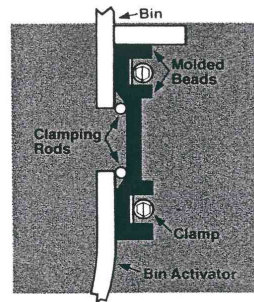
Each Vibra Screw Bin Discharger is supported by a series of forged steel hangers, fitted with steel core elastomer vibration isolators. The result is enormous strength along with near total isolation of the Bin Discharger vibration from the bin and surrounding structure.

Cast or fabricated metal hangers with unpredictable performance characteristics under stress are never used on Vibra Screw Bin Dischargers.



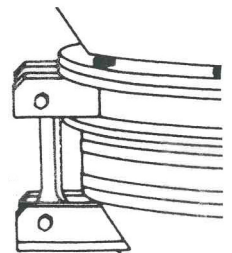
Patented Beaded Sleeve

Molded in one piece with 4 retaining beads, this Vibra Screw innovation has eliminated the problem of sleeve leakage and slippage. Stainless Steel clamps fit securely between the beads and tighten easily and effectively. This sleeve design is so effective it will withstand 10 psi internal pressure and is standard on all Bin Dischargers. Special compounds for high temperature and a flanged bolted sleeve for high pressure are also available.



Preassembled Mounting Ring

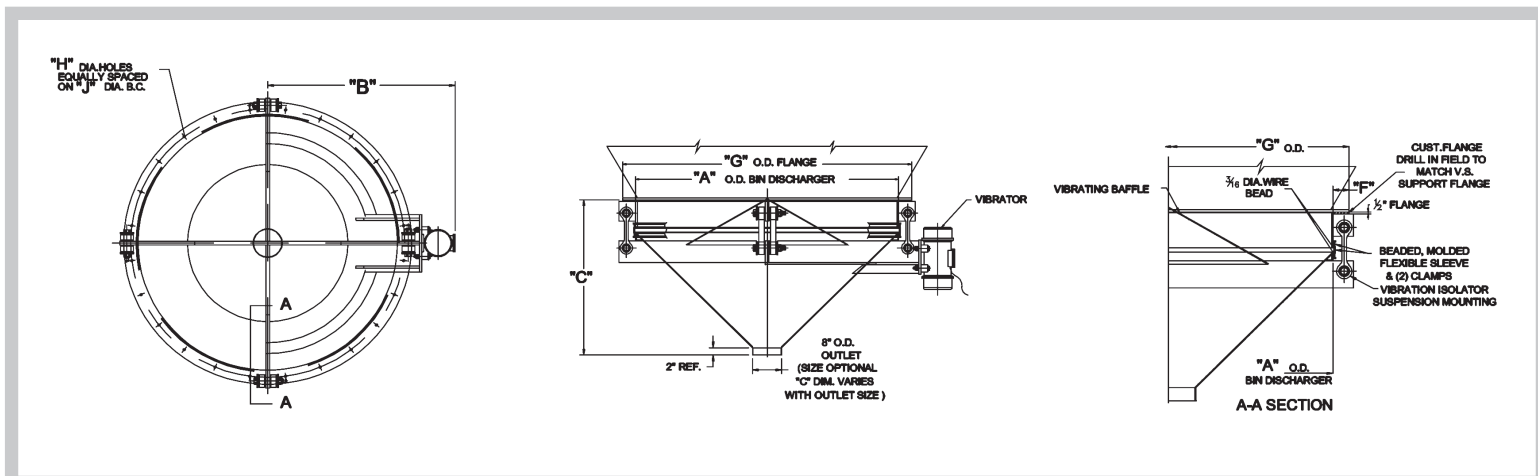
For a trouble-free installation, we offer a pre-assembled mounting ring. This means the Bin Discharger can be shipped completely assembled and ready to be bolted or welded to the bin.





BIN DISCHARGERS

Engineering Specifications



Dimensions inches (mm)

SIZE	A	B	C	F	G	H	#	J	HP	KW	WGT
2' (0.6m)	24" (610mm)	28 5/16" (719mm)	19 3/8" (492mm)	3" (76mm)	30" (762mm)	11/16" (17mm)	12	28" (711mm)	0.62	0.46	340 LB (153 KG)
3' (0.9m)	36" (914mm)	34 5/16" (872mm)	24 3/8" (619mm)	3" (76mm)	42" (1067mm)	11/16" (17mm)	16	39" (991mm)	0.62	0.46	425 LB (191 KG)
4' (1.2m)	48" (1219mm)	41 1/4" (1048mm)	30 3/8" (772mm)	3" (76mm)	54" (1372mm)	11/16" (17mm)	16	51" (1295mm)	1 1/2	1.1	510 LB (230 KG)
5' (1.5m)	60" (1524mm)	47 1/4" (1200mm)	36 3/8" (924mm)	3 1/2" (89mm)	67" (1702mm)	11/16" (17mm)	20	63" (1600mm)	1 1/2	1.1	850 LB (383 KG)
6' (1.8m)	72" (1829mm)	55 3/8" (1407mm)	43 3/8" (1102mm)	3 1/2" (89mm)	79" (2007mm)	13/16" (21mm)	24	75" (1905mm)	2 1/2	1.9	1200 LB (540 KG)

Above dimensions not to be used for construction.

For special size units, consult Vibra Screw.

CONTACT MATERIALS

- a. Carbon steel
- b. 304 stainless steel
- c. 316 stainless steel
- d. Abrasion-resistant steel

Silicone, Nomex ply, for temperatures to 500°F (260°C).
Molded flanged sleeve for pressures to 14.9 psi. Standard sleeve for pressures to 10 psi.

EXTERNAL SUPPORT BRACKETS

Carbon Steel

MOTORS

Standard:
230 or 460/3/60 totally enclosed, supplied with 6 ft Neoprene - covered cable --chemical type.

Optional:
Explosion proof, Class I, Group D, Class II; Group F & G.
Severe Duty.
Special Voltages on request.
Pneumatic, hydraulic.

FLEXIBLE BEADED SLEEVES

Standard: Black Nordel or Neoprene 2-ply polyester, for temperatures to 325°F (163 °C).
Optional: White Nordel or Neoprene, 2-ply polyester, for temperatures to 325°F (163°C).

OUTLET SIZES

Based on required flow rate or connections to down-stream equipment.

COATINGS

Note: All mild steel surfaces are sandblasted in Vibra Screw's modern sandblasting department prior to coating.

Standard External:
Machinery gray enamel.

Optional External:
Epoxy Paints.
Corrosion-resistant paints.
Customer-specified special paints or colors.

Standard Internal:

Stainless steel units, uncoated.
Carbon steel units, coated with rust preventive.

Optional Internal:

Epoxy painted, food grade.
UHMW Polyethylene lining.

OUTLET NOZZLES:

Bin Dischargers can be supplied with adjustable nozzles to feed a belt or vibrating pan conveyor.