



# VIBRA SCREW INC.

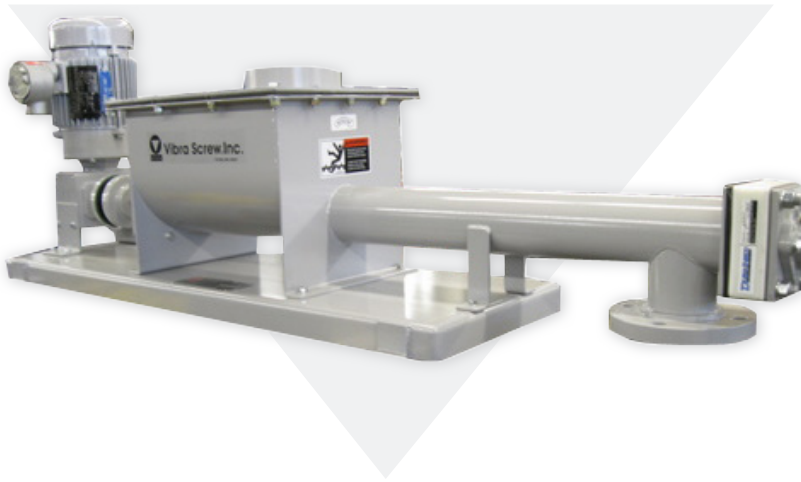
The most trusted name in dry  
solids processing.

755 Union Boulevard Totowa, New Jersey 07512

Phone: 973-256-7410 Fax: 973-256-2114 [www.VibraScrew.com](http://www.VibraScrew.com)

HDMC-11  
VOLUMETRIC SCREW FEEDERS & CONVEYORS

## HEAVY DUTY METERING CONVEYOR



### Screw Sizes to 16" Capacities to 9,800 Cubic Feet Per Hour

The Vibra Screw Metering Conveyor provides extremely reliable & economical feeding of a wide range of dry bulk materials. Standard units are available in screw diameters from 4 to 16 inches for a capacity range of 20 to 9,800 cubic feet per hour.

Extended screw lengths of up to 12 feet from center of inlet to outlet permit the unit to meet most short distance conveying needs.

#### THE VIBRA SCREW GUARANTEE

If your Vibra Screw equipment doesn't perform in the service for which it was sold, we'll refund your money. Ask any other equipment manufacturer to put that in writing.

**No time limits. No conditions.**

### Equipment System Integration

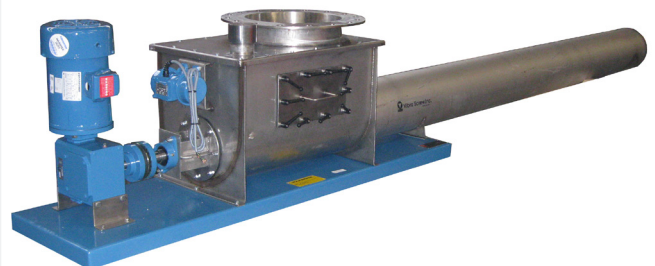
When combined with vibratory pre-feed equipment such as the Vibra Screw Bin Activator, Live Bottom Bin, or Live Bin, the Metering Conveyor will deliver minute-to-minute feed accuracies of  $\pm 2\%$ . The pre-feed equipment ensures complete filling of the screw flights with uniformly dense material.

### Rugged Construction

Construction is simple and rugged with a heavy duty transmission, sealed and grease lubricated bearings, and a flight screw with through shaft and trough end seals.

### Application Experience

From 1955 until the present, our material handling experience allows us to provide solutions for your special requirements which can be found among our thousands of applications, worldwide. This permits us to offer the best Guarantee in the industry.



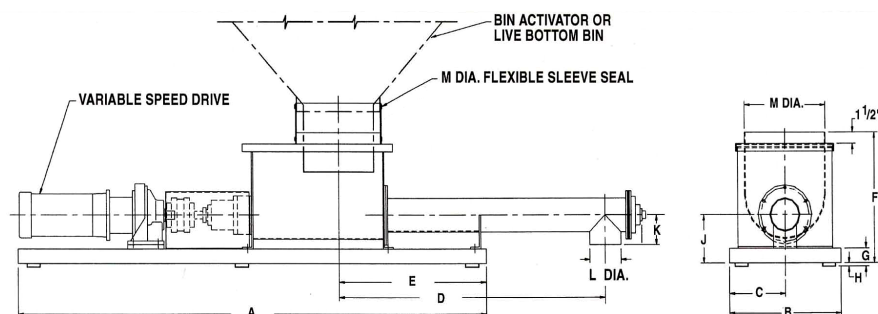
## VOLUMETRIC SCREW FEEDERS &amp; CONVEYORS

# HEAVY DUTY METERING CONVEYOR



The Vibra Screw Heavy Duty Metering Conveyor is designed to handle the widest range of high volume applications. Standard units are available in screw diameters from 4 to 16 inches for a capacity range of 20 to 9,800 cubic feet per hour.

The Heavy Duty Metering Conveyor is particularly suited for heavy duty density materials, pressure or high temperature applications, as well as those requiring extended screws and tubes.



## Dimensions inches (mm)

Size	A	B	C	D	E	F	G	H	J	K	L	M	N	Max HP	CU FT (CU M) Hr.
4 (102)	61 (1549)	16 1/2 (419)	8 1/4 (210)	26 (660)	17 (432)	17 7/8 (454)	2 3/8 (60)	3/8 (10)	7 (178)	4 (102)	4 1/2 (114)	12 (305)	5 1/8 (130)	3/4	200 (516)
6 (152)	68 (1727)	18 1/2 (470)	9 1/4 (235)	34 (864)	24 (610)	18 1/8 (460)	3 3/8 (86)	3/8 (10)	8 3/8 (213)	5 3/8 (137)	7 (178)	14 (356)	6 3/8 (162)	1	600 (16.8)
8 (203)	90 (2286)	18 1/2 (470)	9 1/4 (235)	43 (1092)	32 (813)	21 (533)	4 (102)	1 (25)	9 3/4 (248)	6 5/8 (168)	9 (229)	14 (356)	7 3/8 (187)	1 1/2	1200 (33.6)
10 (254)	103 (2616)	20 1/2 (521)	10 1/4 (260)	54 (1372)	42 (1067)	25 1/4 (641)	4 (102)	1 (25)	11 (279)	8 3/8 (213)	11 (279)	16 (406)	8 3/4 (222)	2	2400 (67.2)
12 (305)	110 (2794)	22 1/2 (572)	11 1/4 (286)	66 (1676)	50 (1270)	25 5/8 (651)	4 (102)	1 (25)	12 (305)	9 (229)	13 (330)	18 (457)	9 7/8 (251)	2	4140 (115.9)
14 (356)	110 (2794)	26 1/2 (673)	13 1/4 (337)	72 (1829)	46 (1168)	26 5/8 (676)	4 (102)	1 (25)	13 (330)	10 (254)	15 (381)	22 (559)	11 1/4 (286)	3	6560 (183.6)
16 (406)	118 (2997)	30 1/2 (775)	15 1/4 (387)	84 (2134)	48 (1219)	27 5/8 (702)	4 (102)	1 (25)	14 (356)	11 (279)	17 (432)	26 (660)	12 1/2 (318)	5	9800 (274.4)

Dimension A will vary with drive.

### CONTACT MATERIALS

- a. Carbon steel
- b. 304 stainless steel
- c. 316 stainless steel
- d. Special Alloys

### EXTERNAL MATERIALS

Carbon Steel

### COATINGS

**Standard external:** machinery enamel

**Optional external:**

- a. Epoxy paints
- b. Corrosion resistant paints
- c. Customer-specified paints, colors

**Standard Internal:** machinery enamel for carbon steel; stainless and other alloys, uncoated

**Optional internal:**

- a. Epoxy paints
- b. Teflon coating
- c. Customer specified

### DRIVES

**Standard:**

- a. SCR solid state DC drives, potentiometer controlled, 115-240/1/60, available with modification to accept external signal; 1-5 mA, 4-20 mA, 10-50 mA, 0-6 v.
- b. Inverter variable AC drive
- c. AC constant speed

### ENCLOSURES

**Standard:** totally enclosed, fan-cooled

**Optional:**

- a. Explosion-proof, Class I, Group D, Explosion-proof, Class II, Group F & G
- b. Chemical type, severe duty
- c. Customer specified

### SANITARY APPLICATIONS

**Standard:**

- a. All internal seams continuously welded
- b. All welds ground smooth
- c. All internal surfaces polished, #4 finish

- d. Food grade gaskets and seals
- e. Material contact zone covers & frames equipped with quick disconnect fasteners for ease of cleaning

### PRESSURE APPLICATIONS

Feeders can be constructed for pressure applications up to 14.9 psig.

### HIGH TEMPERATURE APPLICATIONS

Special modifications permit operation up to 450° F.