

# VIBRA SCREW CASE HISTORY



C-211

## Live Bottom Bin Handles A Ton A Minute of Peat Moss

### Customer

Anderson Peat Company, Imlay City, Michigan. Producers of peat moss, compost, manure, potting soils, and top soil sold in 40 states east of the Rockies.

### Problem

Peat moss is a very fibrous material which can contain as much as 60 to 65% moisture, depending on the season. Bulk density is 30 to 35 lbs. per cu. ft. Gravity flow from storage is very unsatisfactory because the product cakes and bridges, requiring practically all of one man's time poking and prodding to keep it moving. As the company's business expanded, they installed double baggers, with the result that handling turned critical. The amount of time required to keep material flowing became excessive, and measures had to be taken to correct the situation.

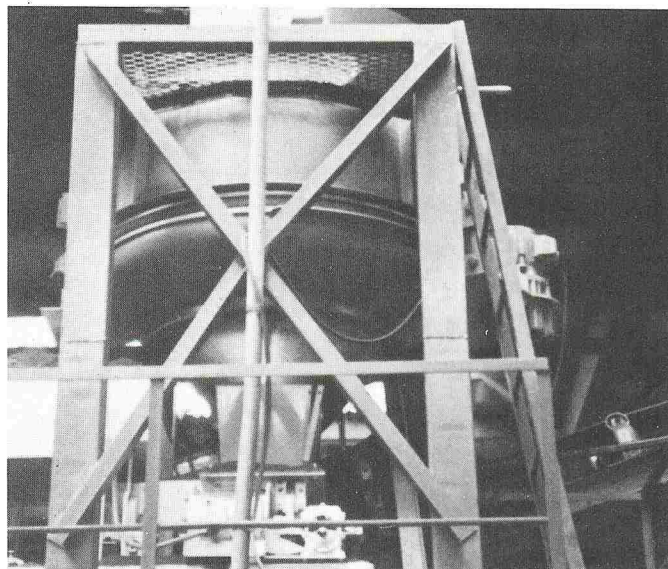
### Solution

1 Vibra Screw Live Bottom Bin, LBB 5-50, carbon and 304 stainless steel construction, dual 12-in. diam. outlets.

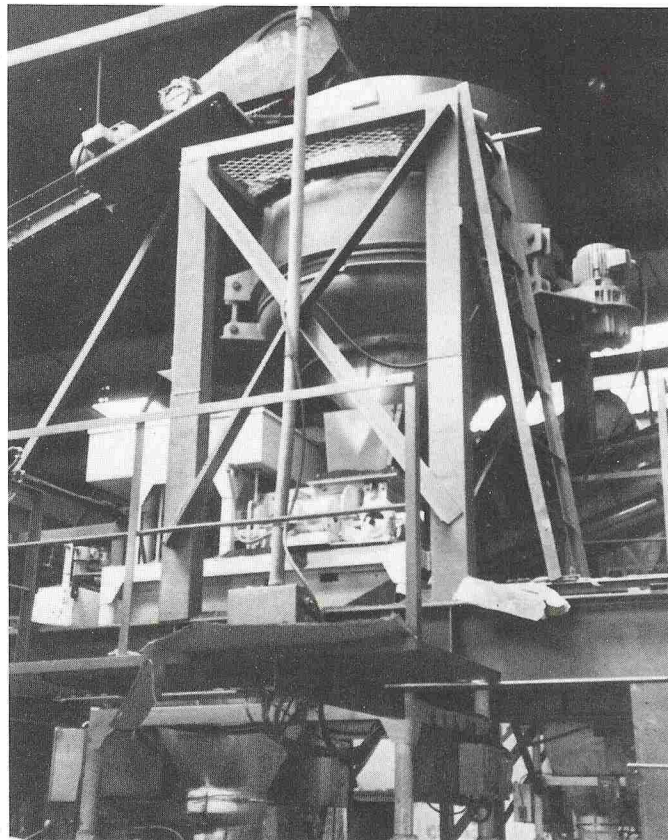
After successful preliminary tests in the Vibra Screw laboratory, the company installed a Live Bottom Bin with dual outlets designed to supply the two baggers. One bagger is fed direct from one outlet, and the other outlet feeds a conveyor in back of the first bagger. The Live Bottom Bin, which has a capacity of 50 cu. ft., is a self-contained unit consisting of a static bin and a Bin Activator, which is subjected to controlled vibration. An integral baffle located above the discharge outlet of the Activator projects vibrations up into the bin. This eliminates the bridging which occurs with unaided flow, and saves one man's full time. The materials are fed through the Live Bottom Bin to the baggers where they are put up in 40 lb. bags. A ton of material a minute, including peat moss, compost, and manure, flows through the Live Bottom Bin daily.

### Results

Anderson Peat Company has had no problems whatsoever with their Live Bottom Bin, and all the materials — peat moss, compost, and manure — flow very well through the equipment. Production has increased to such an extent that the unit is scheduled to pay for itself this year.



Anderson Peat Company has had no problems whatsoever with their Live Bottom Bin, and all the materials — peat moss, compost and manure — flow very well through the equipment.



The Live Bottom Bin is a self-contained unit consisting of a static bin and Bin Activator, which is subjected to controlled vibration.