

Expensive Bagging of Lime Obviated by Bin Activator Installation

The Customer:

California Cement Shake Company, Irwindale, California, manufacturers of a unique roof made of lightweight cement instead of the conventional concrete and clay products.

The Problem:

Four years ago, at this company's new plant, the management was faced with two alternatives for buying and storing lime; bag or bulk. Bag form would involve more manual (and costly) handling. Bulk was obviously better but here CCSC had the prospective problem of lime storage in bins. Its hygroscopic nature would cause arching and bridging problems.

Vibra Screw Equipment:

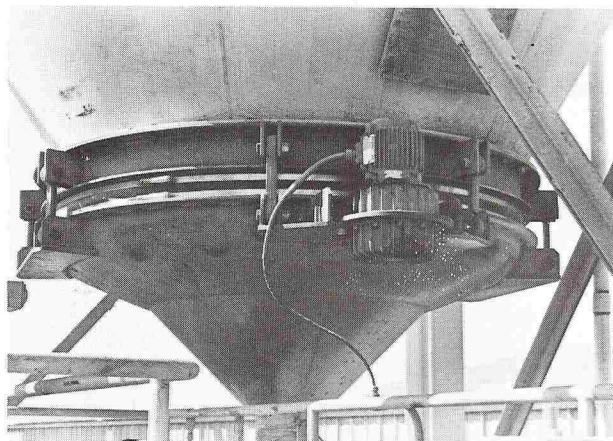
One 7-ft. dia. Bin Activator, carbon steel construction.

The Solution:

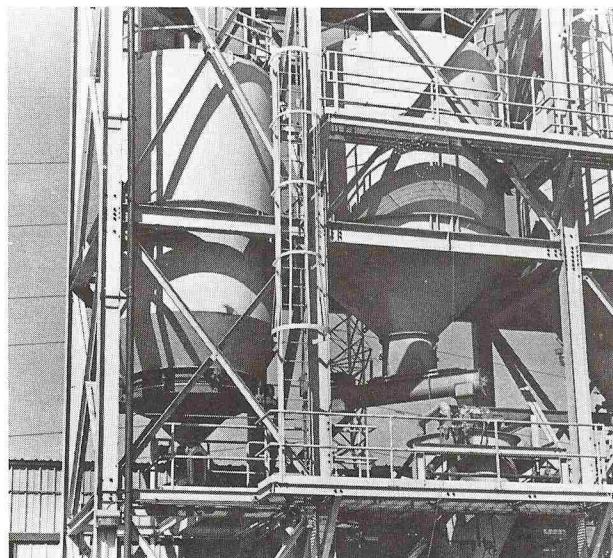
The company installed a new 10-ft. dia. x 11-ft. straight side storage bin, equipped with a Vibra Screw Bin Activator. This installation made possible the delivery of lime to a transfer screw feeding a mix tank on a continuous, uninterrupted basis. The lime is fed to the bin by truck unloading, and it is discharged by the Bin Activator to a screw conveyor which carries it to a slurry mixing tank.

The Results:

The ability of CCSC to produce its special form of lightweight roofing material depends on the delivery of hydrated lime on demand from bulk storage. The Vibra Screw Bin Activator has been doing just that for four years with no problems, no downtime, and no maintenance needed. The installation was estimated to have paid for itself in six months.



Bin Activator delivers lime to a transfer screw feeding a mix tank on a continuous, uninterrupted basis.



The 10-ft. diameter storage bin (left) is equipped with a 7-ft. Vibra Screw Bin Activator.