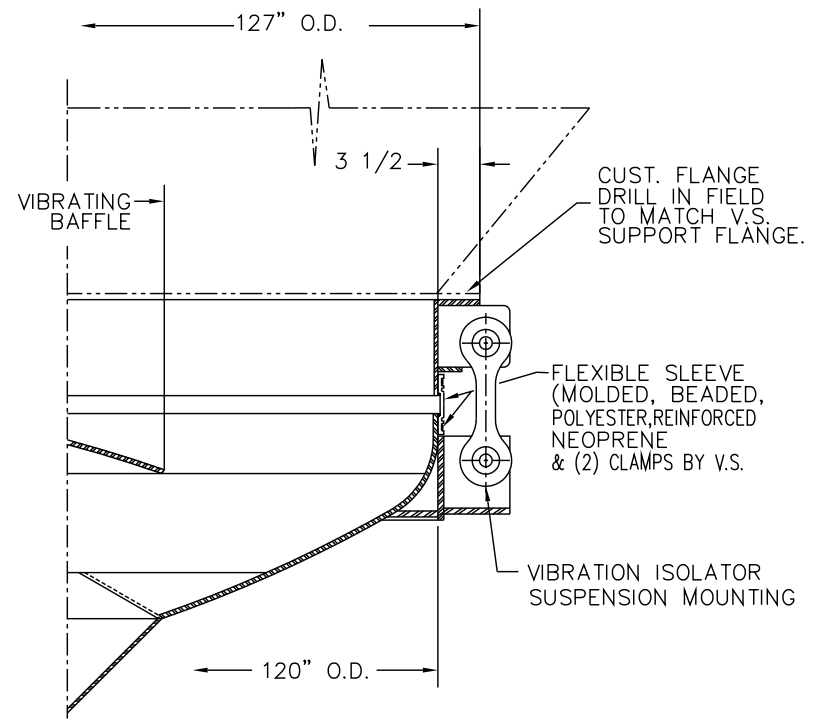
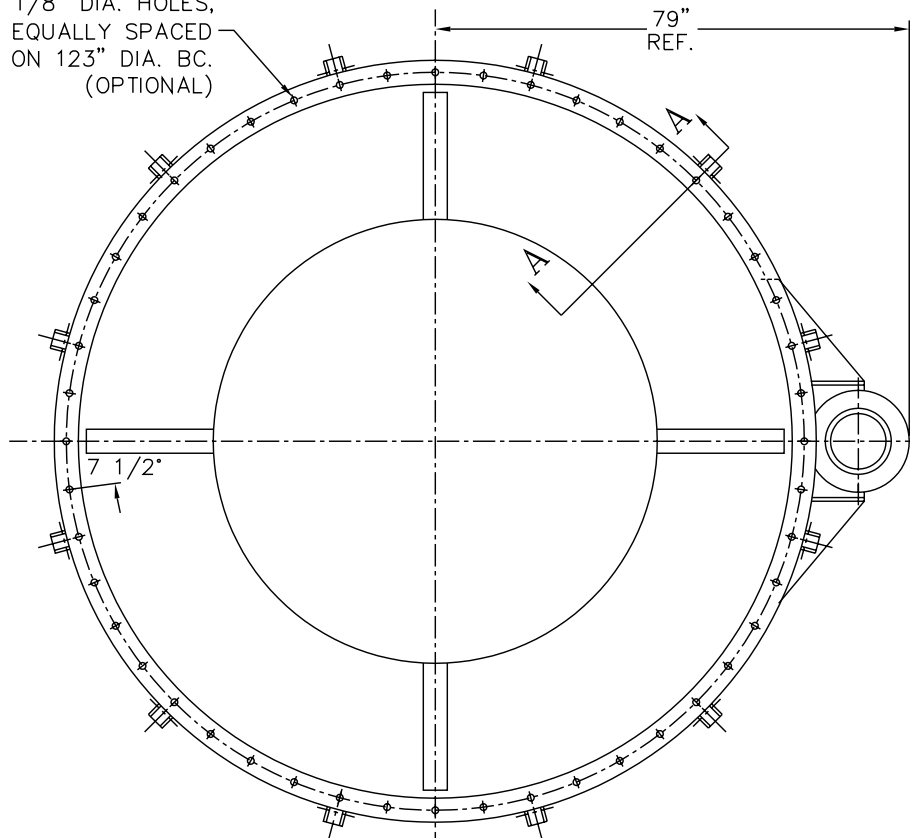


(48) 1 1/8" DIA. HOLES,  
EQUALLY SPACED  
ON 123" DIA. BC.  
(OPTIONAL)



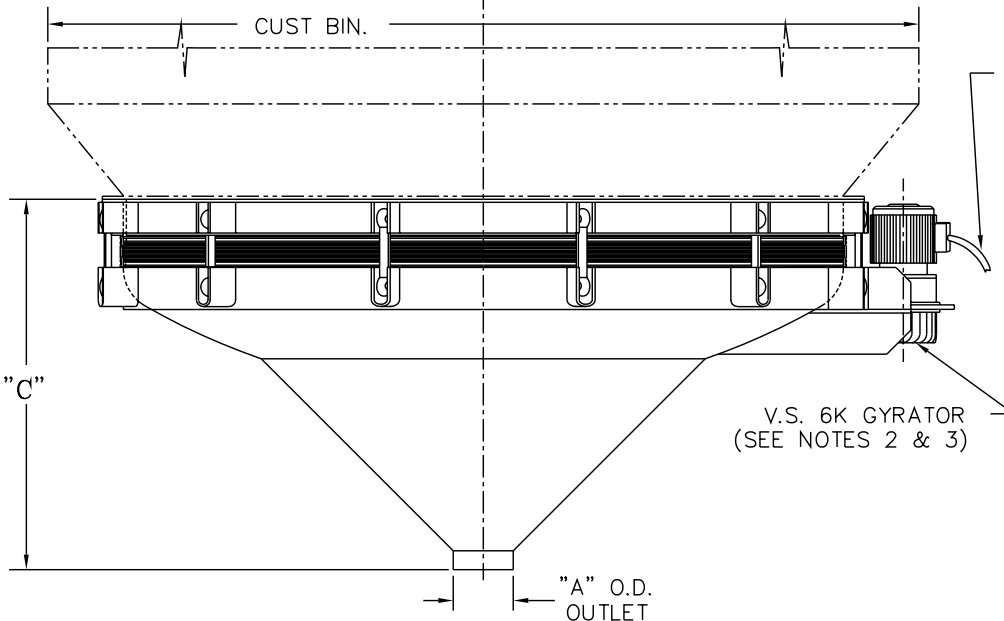
SECTION A - A

NEOPRENE COVERED CABLE  
(SO 14/4) APPROX. 6FT. LG.  
BY V.S.

NOTES:

- 1 - CONTACT MATERIAL: CARBON STEEL, 304 STAINLESS STEEL OR 316 STAINLESS STEEL.
- 2 - GYRATOR MOTOR TO BE 3HP, 1750 RPM, T.E.N.V., OR EXPL. PF., 230 OR 460/3/60.
- 3 - ALL ELECTRICAL CONNECTIONS TO BE FLEXIBLE.
- 4 - ALL CONNECTIONS TO BIN ACTIVATOR TO BE FLEXIBLE.

THE RECIPIENT OF THIS DOCUMENT AGREES NOT TO REPRODUCE, COPY, TRANSMIT OR USE THIS DOCUMENT AND/OR THE INFORMATION CONTAINED IN THIS DOCUMENT IN WHOLE OR IN PART, FOR ANY PURPOSE, EXCEPT WITH THE WRITTEN PERMISSION OF VIBRA SCREW INCORPORATED.



V.S. 6K GYRATOR  
(SEE NOTES 2 & 3)

"A" OUTLET SIZE	"C" OVERALL HEIGHT
10"	61 3/4"
12"	60 3/4"
14"	59 3/4"
16"	58 3/4"

<i>Vibra Screw Incorporated</i>		
755 UNION BLVD.		TOTOWA, N.J. 07512
TITLE 10'-0" DIA. BIN ACTIVATOR WITH PREASSEMBLED MOUNTING RING AND OIL LUBRICATED GYRATOR		
DWN/DATE I.S. 4/25/2001	CHK. BY	DWG. NO.
CAD FILE NAME N:\BA\STDASSY\15599-SD	APP. BY	15599-SD