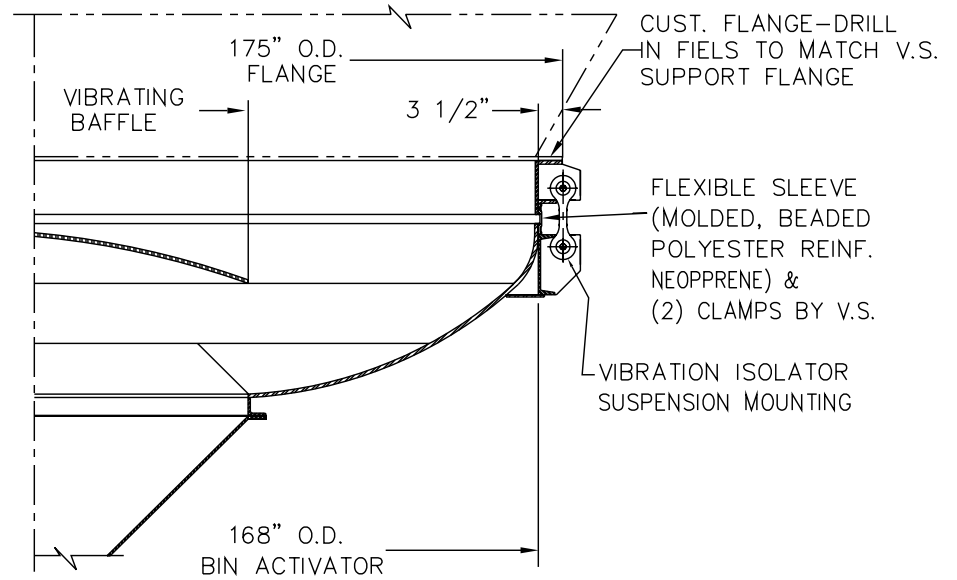
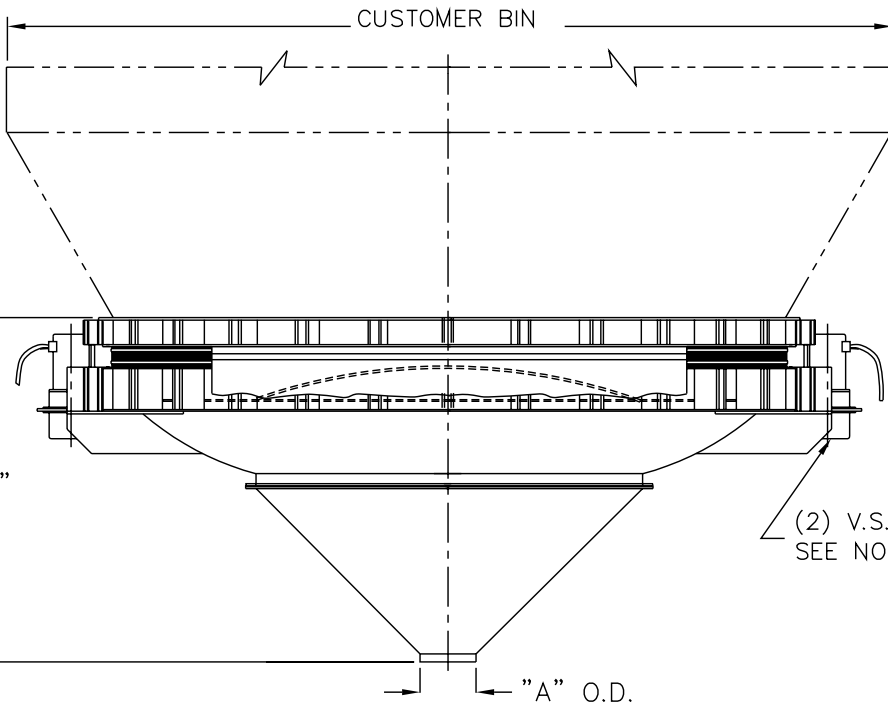


(72) 1-1/8" DIA. HOLES EQ.  
SPACED ON A 171" DIA. B.C.



SECTION A-A



NOTES:

- 1 - CONTACT MATERIAL: CARBON STEEL, 304 SS, 316 SS
- 2 - GYRATOR MOTOR TO BE 5HP, 1750 RPM, T.E.N.V., -OR- EXPL. PF., 230 OR 460/3/60.
- 3 - ALL ELECTRICAL CONNECTIONS TO BE FLEXIBLE.
- 4 - ALL CONNECTIONS TO BIN ACTIVATOR TO BE FLEXIBLE.

THE RECIPIENT OF THIS DOCUMENT AGREES NOT TO REPRODUCE, COPY, TRANSMIT OR USE THIS DOCUMENT AND/OR THE INFORMATION CONTAINED IN THIS DOCUMENT IN WHOLE OR IN PART, FOR ANY PURPOSE, EXCEPT WITH THE WRITTEN PERMISSION OF VIBRA SCREW INCORPORATED.

"A"	"C"
12"	86-1/2"
14"	85-1/2"
16"	84-1/2"
18"	83-1/2"

<b>Vibra Screw Incorporated</b>		
755 UNION BLVD.		TOTOWA, N.J. 07512
TITLE 14'-0" DIA. BIN ACTIVATOR WITH PREASSEMBLED MOUNTING RING AND OIL LUBRICATED GYRATOR		
DWN/DATE I.S. 4/07/2001	CHK. BY	DWG. NO.
CADE FILE NAME N:\BA\STDASSY\16204-SD	APP. BY	16204-SD