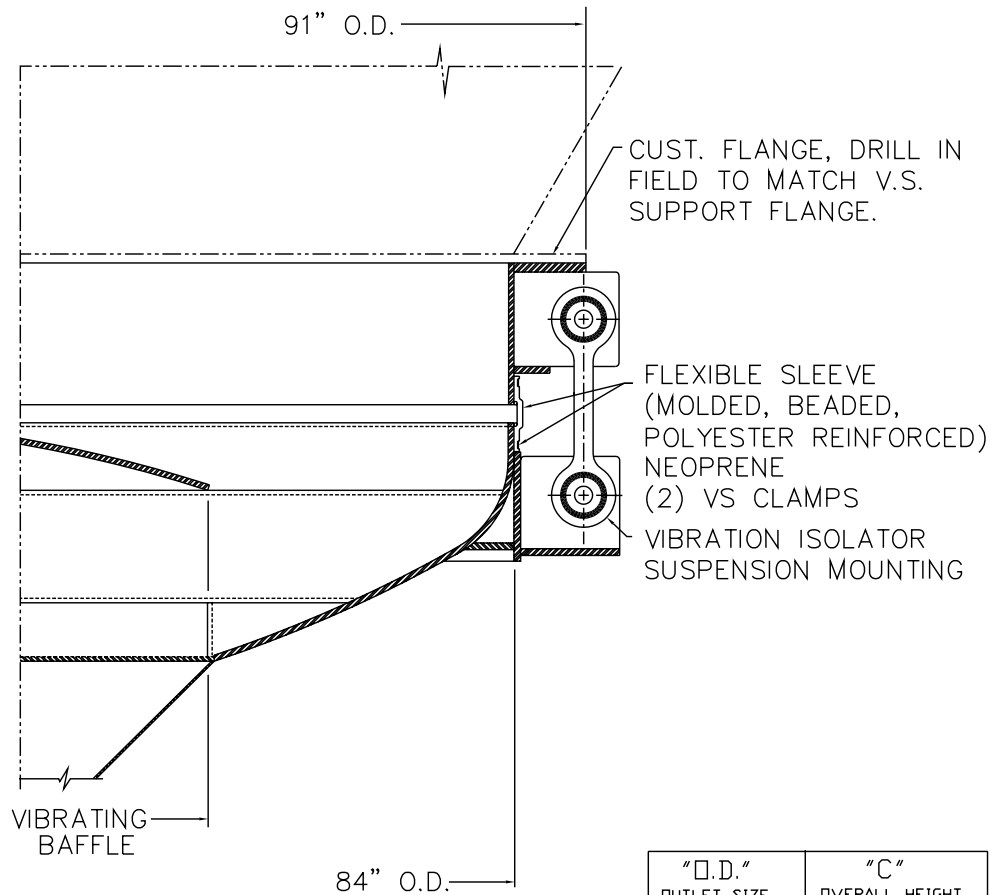
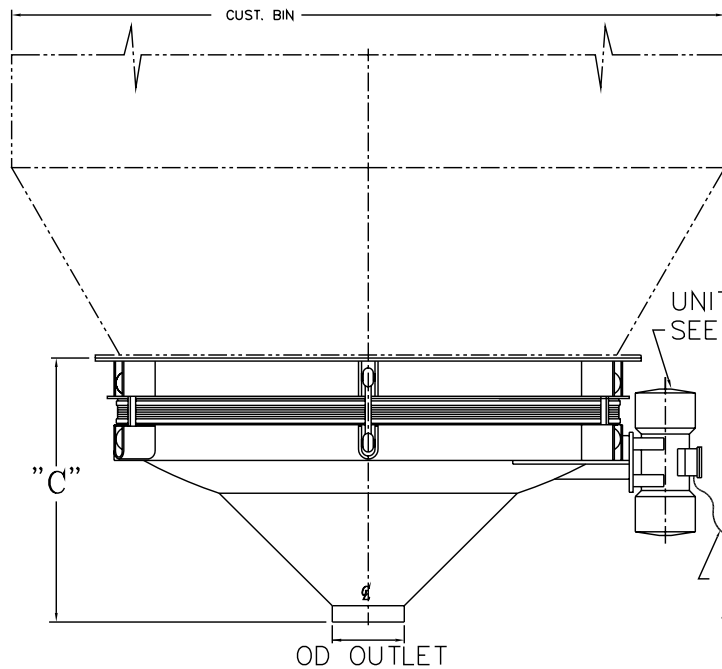
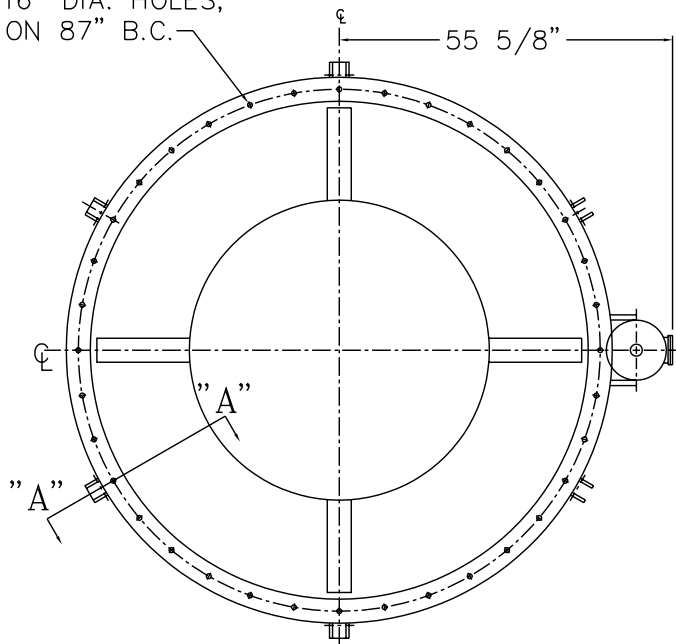


(36) 13/16" DIA. HOLES,
EQ. SP. ON 87" B.C.



SECTION "AA"

"O.D." OUTLET SIZE	"C" OVERALL HEIGHT
8"	46"
10"	45"
12"	44"
14"	43"

NOTES:

- 1 - CONTACT MATERIAL:
- 2 - VIBRATOR MOTOR: 2 1/2 HP, 1800 RPM, TENV.
460V/3Ø/60Hz,
- 3 - ALL ELECTRICAL CONNECTIONS TO BE FLEXIBLE.
- 4 - ALL CONNECTIONS TO BIN ACTIVATOR TO BE FLEXIBLE.

DO NOT SCALE PRINT

A	RELEASED FOR STANDARD	MJM
LET	REVISION	DATE

DO NOT SCALE PRINT
UNLESS OTHERWISE SPECIFIED
DIMENSIONS ARE IN INCHES
TOLERANCES:
.XX = ±.01
.XXX = ±.005
FRACTIONAL = ±1/32"
ANGULAR = ±1/2"
BREAK SHARP EDGES .005-.015
ALL SMALL FILLETS .020-.040
ALL FINISHED SURFACES 63-125
MICRO INCHES

THE RECIPIENT OF THIS DOCUMENT AGREES NOT TO REPRODUCE, COPY, TRANSMIT OR USE THIS DOCUMENT AND/OR THE INFORMATION CONTAINED IN THIS DOCUMENT IN WHOLE OR IN PART, FOR ANY PURPOSE, EXCEPT WITH THE WRITTEN PERMISSION OF VIBRA SCREW INC.

Vibra Screw Incorporated
755 UNION BLVD. TOTOWA, N.J. 07512

TITLE: **7'-0" DIA BIN ACTIVATOR
WITH PREASSEMBLED MOUNTING RING**

DWN. BY: **R.V. Padoa, 06/09/92** CHK. BY: _____ DWG. NO.: **17132-SD**
SCALE: **3/4"=1'-0"** APP. BY: _____