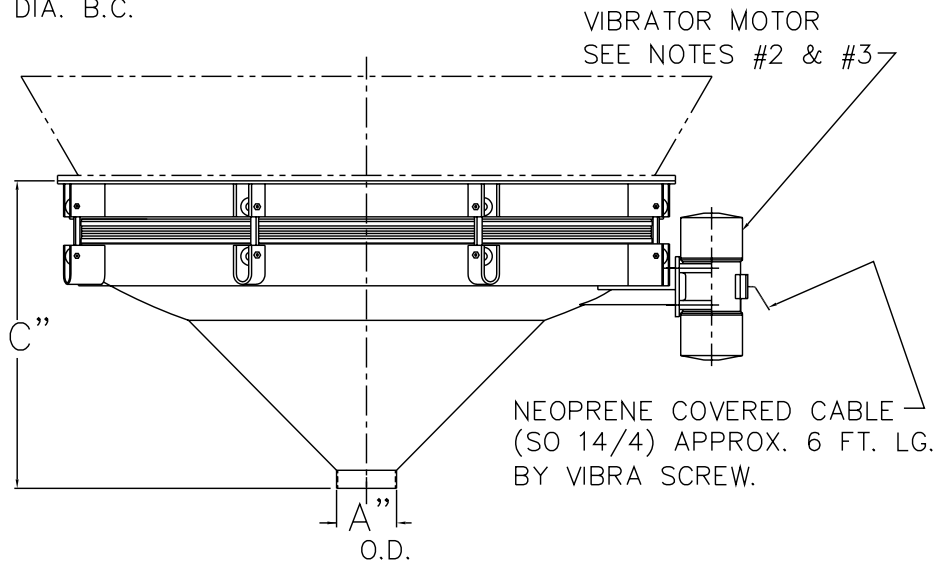
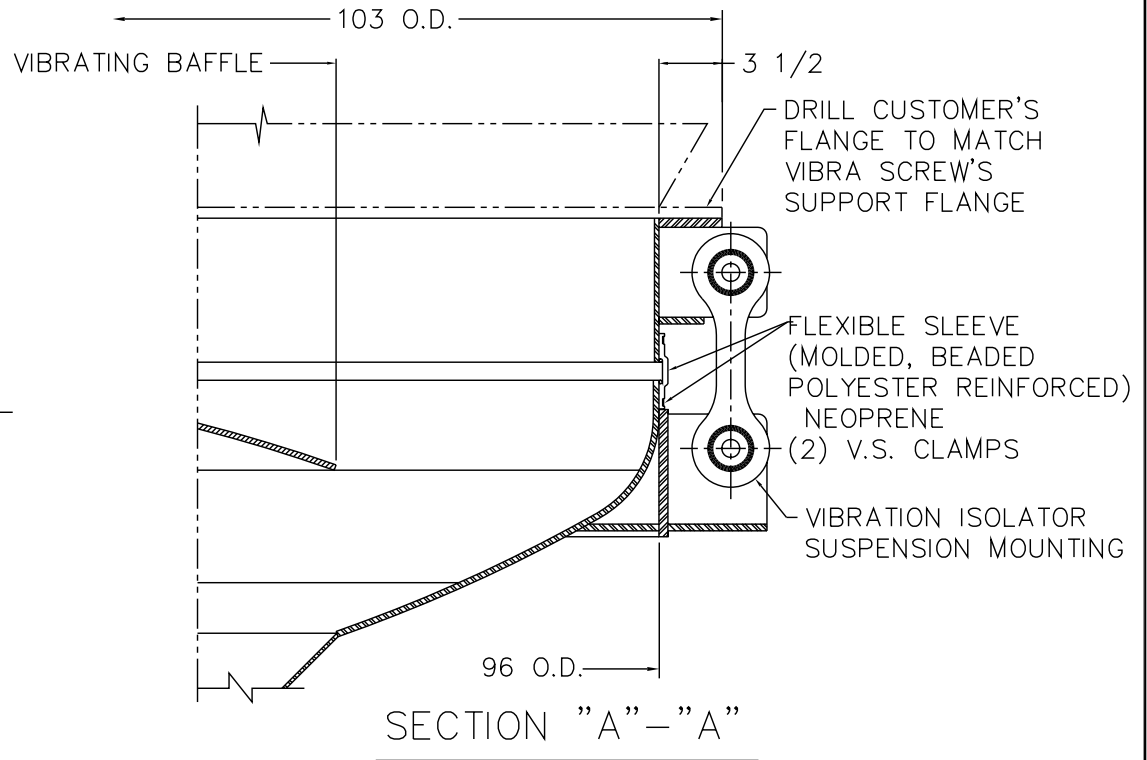


1 1/8 DIA. THRU  
(40) PLACES EQUALLY  
SPACED AS SHOWN ON  
A 99 DIA. B.C.



VIBRATOR MOTOR  
SEE NOTES #2 & #3

NEOPRENE COVERED CABLE  
(SO 14/4) APPROX. 6 FT. LG.  
BY VIBRA SCREW.



SECTION "A" - "A"

NOTES :

- 1 - CONTACT MAT'L. - CARBON STEEL, 304 S.S. OR 316 S.S.
- 2 - VIBRATOR MOTOR : 2 1/2 H.P., TENV, 1800 RPM  
230 OR 460/3/60
- 3 - ALL ELECTRICAL CONNECTIONS TO BE FLEXIBLE.
- 4 - ALL CONNECTIONS TO BIN ACTIVATOR TO BE FLEXIBLE.

DASH No.	A" O.D.	C" HEIGHT
-1	8" O.D.	52 1/4"
-2	10" O.D.	51 1/4"
-3	12" O.D.	50 1/4"
-4	14" O.D.	49 1/4"

THE RECIPIENT OF THIS DOCUMENT AGREES NOT TO REPRODUCE, COPY, TRANSMIT OR USE THIS DOCUMENT AND/OR THE INFORMATION CONTAINED IN THIS DOCUMENT IN WHOLE OR IN PART FOR ANY REASON EXCEPT WITH THE WRITTEN PERMISSION OF VIBRA SCREW INCORPORATED.

DO NOT SCALE PRINT

UNLESS OTHERWISE SPECIFIED  
DIMENSIONS ARE IN INCHES

TOLERANCES :  
...xx = ±.01  
...xxx = ±.005  
FRACTIONAL = ±1/32  
ANGULAR = ±1/2°

REMOVE ALL BURRS  
BREAK SHARP EDGES .005-.015  
ALL SMALL FILLETS .020-.040R.  
ALL FINISHED SURFACES TO BE  
63-125 MICRO INCHES

**Vibra Screw Incorporated**  
755 UNION BLVD. TOTOWA, N.J. 07512

8'-0" DIA. BIN ACTIVATOR  
WITH PRE-ASSEMBLED MOUNTING RING

W/ UNINITIALIZED VIBRATOR

SCALE 3/4" = 1'-0"

CAD FILE NAME

DWG. NO.

17586-SD

F:\BA\STDASSY\17586

REV.	DESCRIPTION	DATE	CHK. BY	DATE	APP. BY	DATE	ELEC. APP.	DATE
A	RELEASED FOR REFERENCE	9/19/95						