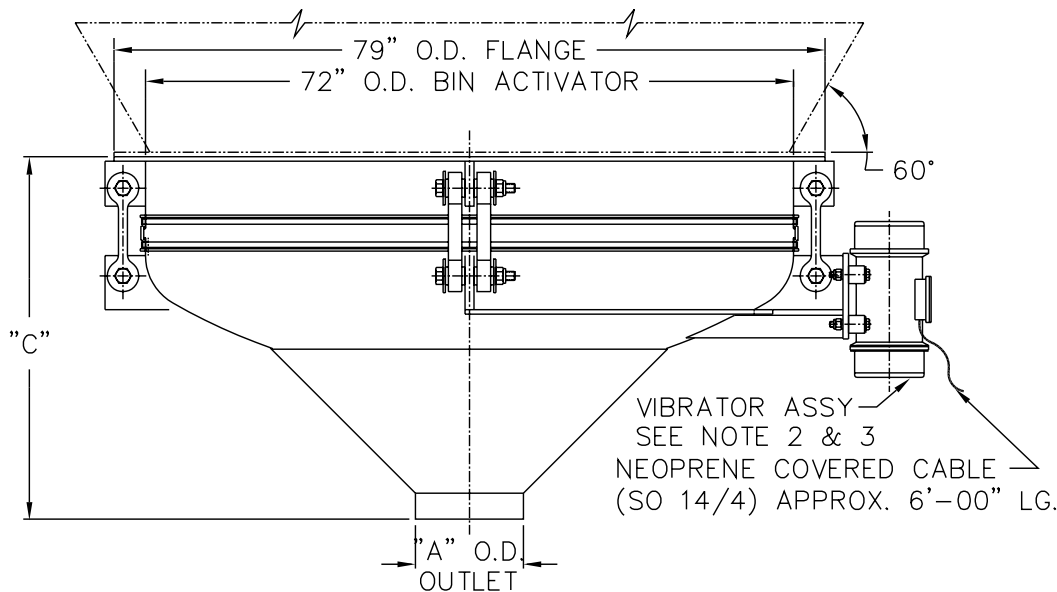


NOTES -

1. CONTACT MATERIAL - CARBON STEEL, 304 SS, 316 SS.
2. VIBRATOR MOTOR: 2 1/2 HP, TENV, 230-460/3/60.
3. ALL ELECTRICAL CONNECTIONS TO BE FLEXIBLE.
4. ALL CONNECTIONS TO BIN ACTIVATOR MUST BE FLEXIBLE.



"A"	"C"
OUTLET SIZE	OVERALL HEIGHT
8"	41 1/2"
10"	40 1/2"
12"	39 1/2"
14"	38 1/2"

THE RECIPIENT OF THIS DOCUMENT AGREES NOT TO REPRODUCE, COPY, TRANSMIT OR USE THIS DOCUMENT AND/OR THE INFORMATION CONTAINED IN THIS DOCUMENT IN WHOLE OR IN PART, FOR ANY PURPOSE, EXCEPT WITH THE WRITTEN PERMISSION OF VIBRA SCREW INCORPORATED.

DO NOT SCALE PRINT		<b>Vibra Screw Incorporated</b> 755 Union Blvd. Totowa, N.J. 07512-2207	
UNLESS OTHERWISE SPECIFIED DIMENSIONS ARE IN INCHES		TITLE <b>6'-0" DIA. BIN ACTIVATOR CENTER FLAT STOCK CROSSMEMBERS AND GREASED VIBRATOR</b>	
TOLERANCES: .XX = ±.01 .XXX = ±.005 FRACTIONAL = ±1/32" ANGULAR = ±1/2" BREAK SHARP EDGES .005-.015 ALL SMALL FILLETS .020-.040R. ALL FINISHED SURFACES 63-125 MICRO INCHES		SCALE <b>3/32"=1"</b> CAD FILE NAME BA\STDASSY\17779-SD_6FL1STK-STD	DWG. NO. <b>17779-SD</b> REV. NO. <b>0</b>