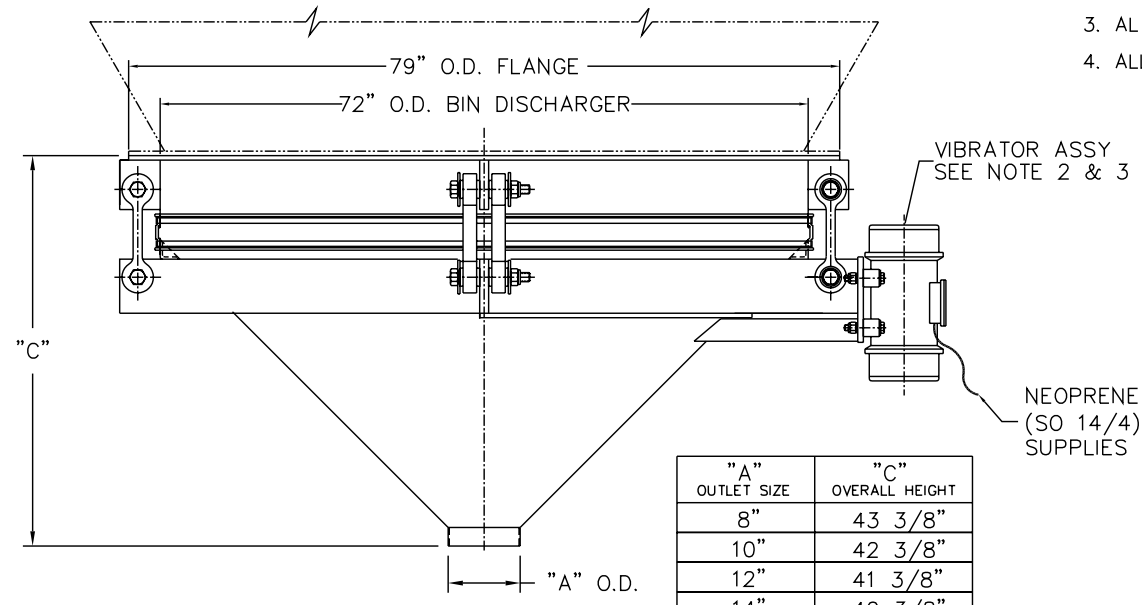


SECTION A-A

NOTES:

1. CONTACT MATERIAL - CARBON STEEL, 304 SS, 316 SS.
2. VIBRATOR MOTOR: 2 1/2 HP, 1800 RPM, TENV, 230 OR 460/3/60.
3. AL ELECTRICAL CONNECTIONS TO BE FLEXIBLE.
4. ALL CONNECTIONS TO BIN DISCHARGER MUST BE FLEXIBLE.



"A" OUTLET SIZE	"C" OVERALL HEIGHT
8"	43 3/8"
10"	42 3/8"
12"	41 3/8"
14"	40 3/8"

THE RECIPIENT OF THIS DOCUMENT AGREES NOT TO REPRODUCE, COPY, TRANSMIT OR USE THIS DOCUMENT AND/OR THE INFORMATION CONTAINED IN THIS DOCUMENT IN WHOLE OR IN PART, FOR ANY PURPOSE, EXCEPT WITH THE WRITTEN PERMISSION OF VIBRA SCREW INCORPORATED.

<b>Vibra Screw Incorporated</b> 755 Union Blvd. Totowa, N.J. 07512-2207		
<b>TITLE</b> 6'-0" DIA. BIN DISCHARGER CENTER FLAT STOCK AND GREASED VIBRATOR		
<b>DWN/DATE</b> I.S. 5/07/2001	<b>DWG. NO.</b> 17922-SD	<b>REV. NO.</b> 0
<small>CAD FILE NAME          N:\BA\BD\STDASSY\17922-SD</small>		