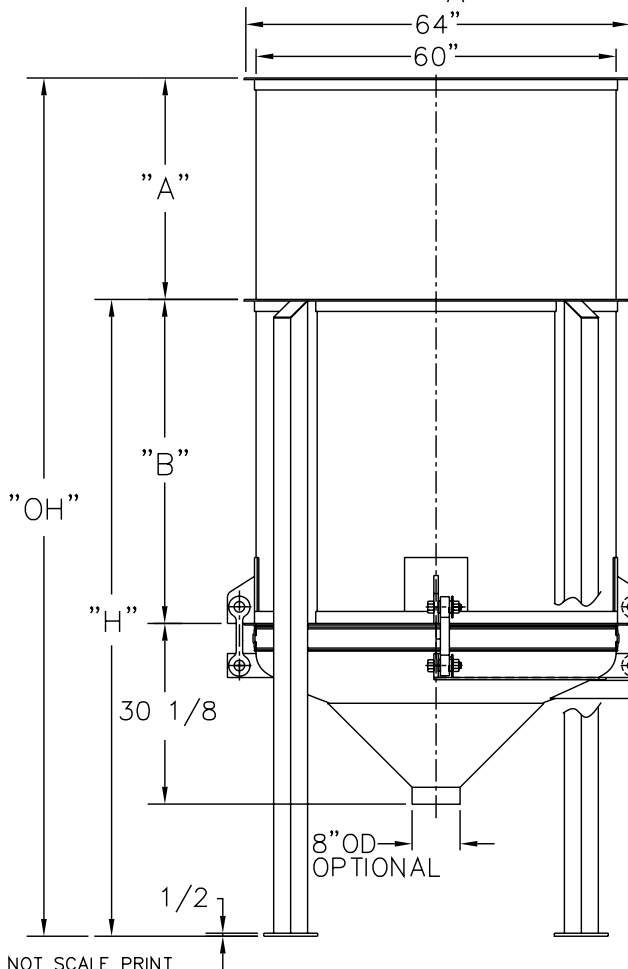
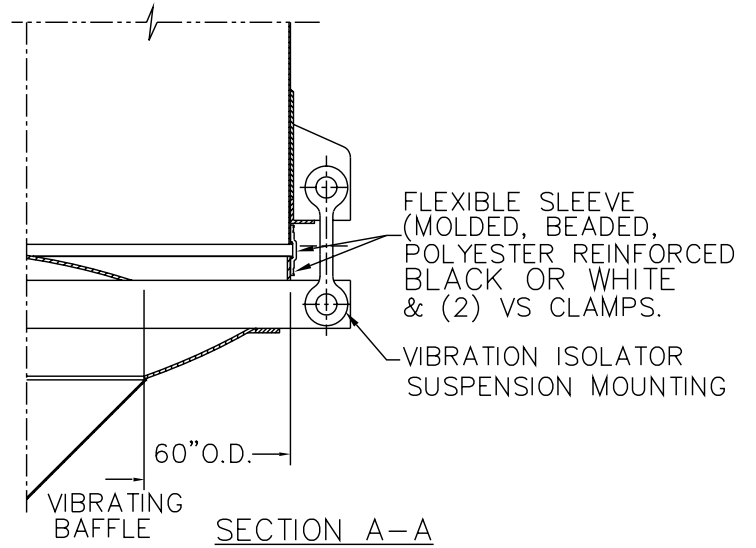
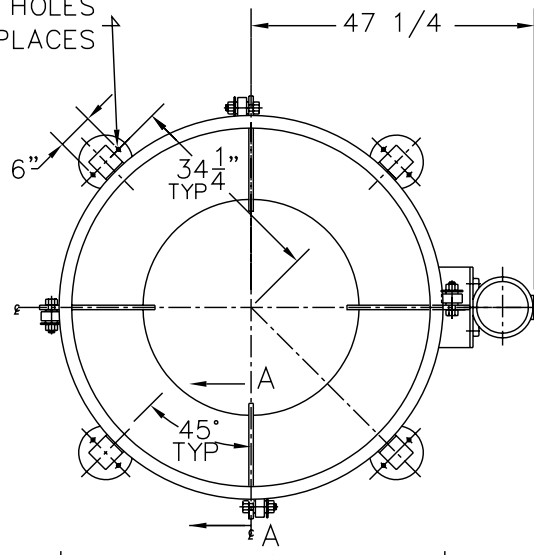


(2) 5/8 DIA. HOLES
TYP. (4) PLACES



MODEL NO.	CAPACITY CU.FT.	"A"	"B"	"H"	"OH"
LBB 5-100	100	—	54	106 1/8	—
LBB 5-150	150	37	47	99 1/8	136 1/8
LBB 5-200	200	67	47	99 1/8	166 1/8

NOTES:

- 1 - CONTACT MATERIAL: CARBON STEEL, 304 STAINLESS STEEL OR 316 STL.STL.
- 2 - VIBRATOR MOTOR TO BE 1 1/2 HP, 1800 RPM
- 3 - ALL ELECTRICAL CONNECTIONS TO BE FLEXIBLE.
- 4 - ALL CONNECTIONS TO BIN ACTIVATOR TO BE FLEXIBLE.

NEOPRENE COVERED CABLE,
(SO 14/4) APPROX. 6FT. LONG
BY : V.S.

VIBRATOR
SEE NOTES
2 & 3

THE RECIPIENT OF THIS DOCUMENT AGREES NOT TO REPRODUCE, COPY, TRANSMIT OR USE THIS DOCUMENT AND/OR THE INFORMATION CONTAINED IN THIS DOCUMENT IN WHOLE OR IN PART, FOR ANY PURPOSE, EXCEPT WITH THE WRITTEN PERMISSION OF VIBRA SCREW INCORPORATED.

DO NOT SCALE PRINT		Vibra Screw Incorporated 755 Union Blvd. Totowa, N.J. 07812-2207	
UNLESS OTHERWISE SPECIFIED DIMENSIONS ARE IN INCHES		TITLE 5 - 100 TO 200 LIVE BOTTOM BIN CENTER FLAT STOCK CROSSMEMBER AND GREASED VIBRATOR	
TOLERANCES: .XX = ±.01 .XXX = ±.005 FRACTIONAL = ±1/32" ANGULAR = ±1/2" BREAK SHARP EDGES .005-.015 ALL SMALL FILLETS .020-.040R.		SCALE .75=12	DWG. NO. 17950-SD
CAD FILE NAME LBB\ASSY\17950_STA_5_100_200_FLATSTK		REV. NO. 1	

1	WEBSITE DRAWING	MJM			
		6/26/01			
REV.	DESCRIPTION	DWN. BY DATE	CHK. BY DATE	APP. BY DATE	ELEC. APP. DATE

DO NOT SCALE PRINT