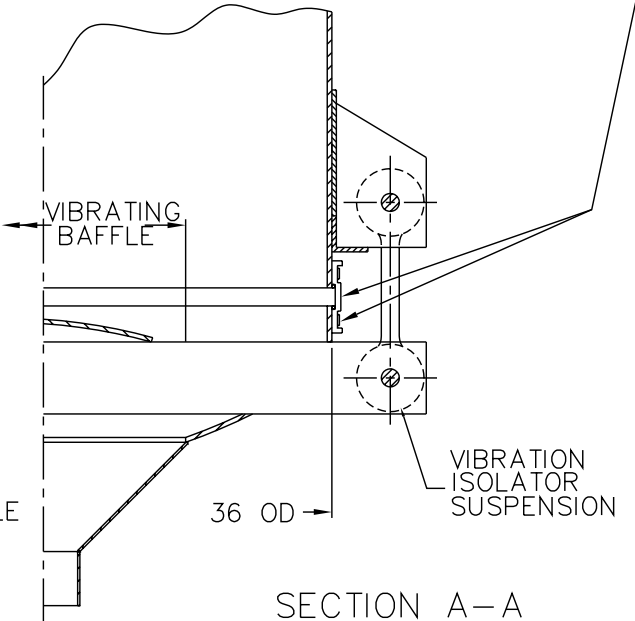


**NOTES:**

- 1 - CONTACT MATERIAL: CARBON STEEL, 304 SS OR 316 STAINLESS STEEL.
- 2 - VIBRATOR MOTOR TO BE 0.62 HP TENV OR EXPL 230-460/3/60.
- 3 - ALL ELECTRICAL CONNECTIONS TO BE FLEXIBLE.

FLEXIBLE SLEEVE (MOLDED, BEADED, POLYESTER REINFORCED) NEOPRENE & (2) CLAMPS



NEOPRENE COVERED CABLE (SO 14/4) APPROX. 6 FT. BY V.S.

8" O.D. OPTIONAL

MODEL NO.	CAPACITY CU.FT.	"B"	"H"	"G"	"OH"
LBB 3-25	25	36	77 1/2	—	—
LBB 3-50	50	47	88 1/2	25	113 1/2

THE RECIPIENT OF THIS DOCUMENT AGREES NOT TO REPRODUCE, COPY, TRANSMIT OR USE THIS DOCUMENT AND/OR THE INFORMATION CONTAINED IN THIS DOCUMENT IN WHOLE OR IN PART, FOR ANY PURPOSE, EXCEPT WITH THE WRITTEN PERMISSION OF VIBRA SCREW INCORPORATED.

DO NOT SCALE PRINT  
UNLESS OTHERWISE SPECIFIED DIMENSIONS ARE IN INCHES  
TOLERANCES:  
.XX = ±.01  
.XXX = ±.005  
FRACTIONAL = ±1/32"  
ANGULAR = ±1/2"  
BREAK SHARP EDGES .005-.015  
ALL SMALL FILLETS .020-.040R.

**Vibra Screw Incorporated**  
755 Union Blvd. Totowa, N.J. 07812-2207

TITLE 3-25 TO 50 LIVE BOTTOM BIN CENTER FLAT STOCK CROSSMEMBER AND GREASED VIBRATOR

SCALE 1/8=1 DWG. NO. 17950E-SD REV. NO. 1

CAD FILE NAME LBB\STDASSY\17950E-SD

REV.	DESCRIPTION	DWN. BY DATE	CHK. BY DATE	APP. BY DATE	ELEC. APP. DATE
1	WEBSITE DRAWING	MJM 6/27/01			