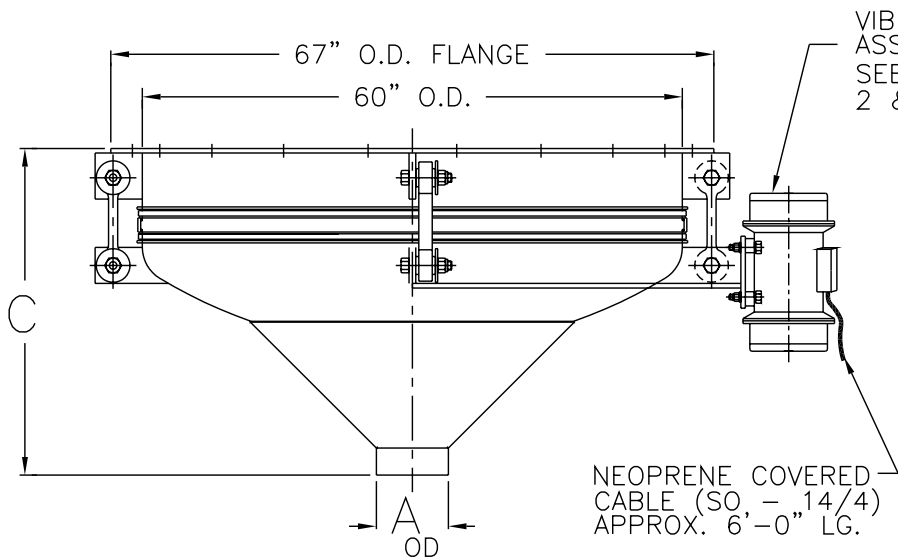
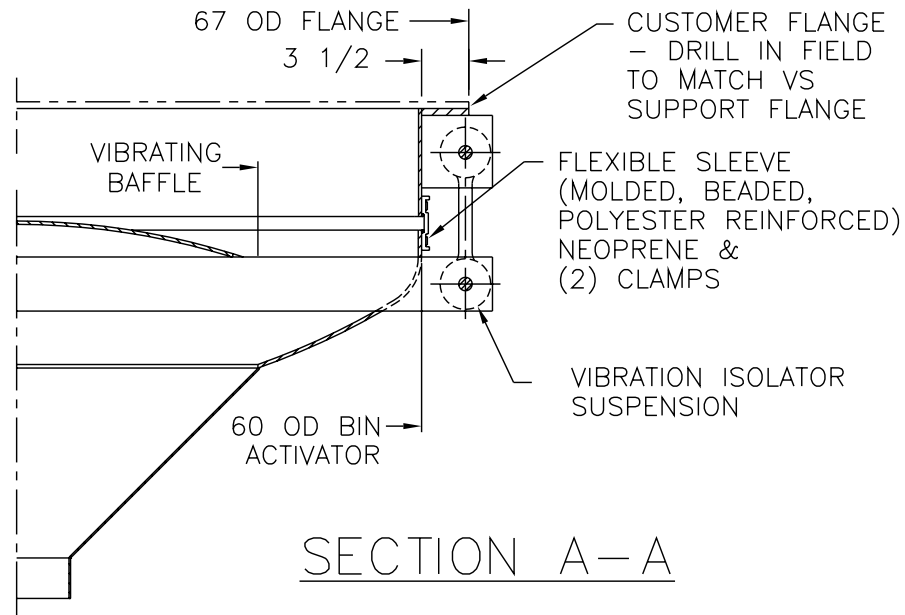


(20) 11/16 DIA HOLES EQUALLY SPACED ON 63 BC



NEOPRENE COVERED CABLE (SO, - 14/4) APPROX. 6'-0" LG.

VIBRATOR ASSEMBLY SEE NOTES 2 & 3



SECTION A-A

NOTES -

- 1 - CONTACT MATERIAL - CARBON STEEL, 304 SS, 316 SS
- 2 - VIBRATOR MOTOR - 1 1/2 HP, 230-460/3/60, 1800 RPM
- 3 - ALL ELECTRICAL CONNECTIONS TO BE FLEXIBLE
- 4 - ALL CONNECTIONS TO BIN ACTIVATOR MUST BE FLEXIBLE

DASH No.	A OD	C
-1	8 OD	36 1/8
-2	10 OD	35 1/8
-3	12 OD	34 1/8

THE RECIPIENT OF THIS DOCUMENT AGREES NOT TO REPRODUCE, COPY, TRANSMIT OR USE THIS DOCUMENT AND/OR THE INFORMATION CONTAINED IN THIS DOCUMENT IN WHOLE OR IN PART, FOR ANY PURPOSE, EXCEPT WITH THE WRITTEN PERMISSION OF VIBRA SCREW INCORPORATED.

DO NOT SCALE PRINT
UNLESS OTHERWISE SPECIFIED DIMENSIONS ARE IN INCHES
TOLERANCES:
.XX = ±.01
.XXX = ±.005
FRACTIONAL = ±1/32"
ANGULAR = ±1/2"
BREAK SHARP EDGES .005-.015
ALL SMALL FILLETS .020-.040R.
ALL FINISHED SURFACES 63-125 MICRO INCHES

Vibra Screw Incorporated
755 Union Blvd. Totowa, N.J. 07812-2207

TITLE: 5'-0" DIA. BIN ACTIVATOR CENTER FLAT STOCK CROSS MEMBER AND GREASED VIBRATOR

SCALE: 3/32"=1"
DWG. No. 17961-SD
REV. No. 0

CAD FILE NAME: ba\stdassy\17961-SD_5ft_on_center_flat_stock

REV.	DESCRIPTION	DWN. BY DATE	CHK. BY DATE	APP. BY DATE	ELEC. APP. DATE
0	RELEASED FOR REFERENCE ONLY	L.K. 5/31/01			