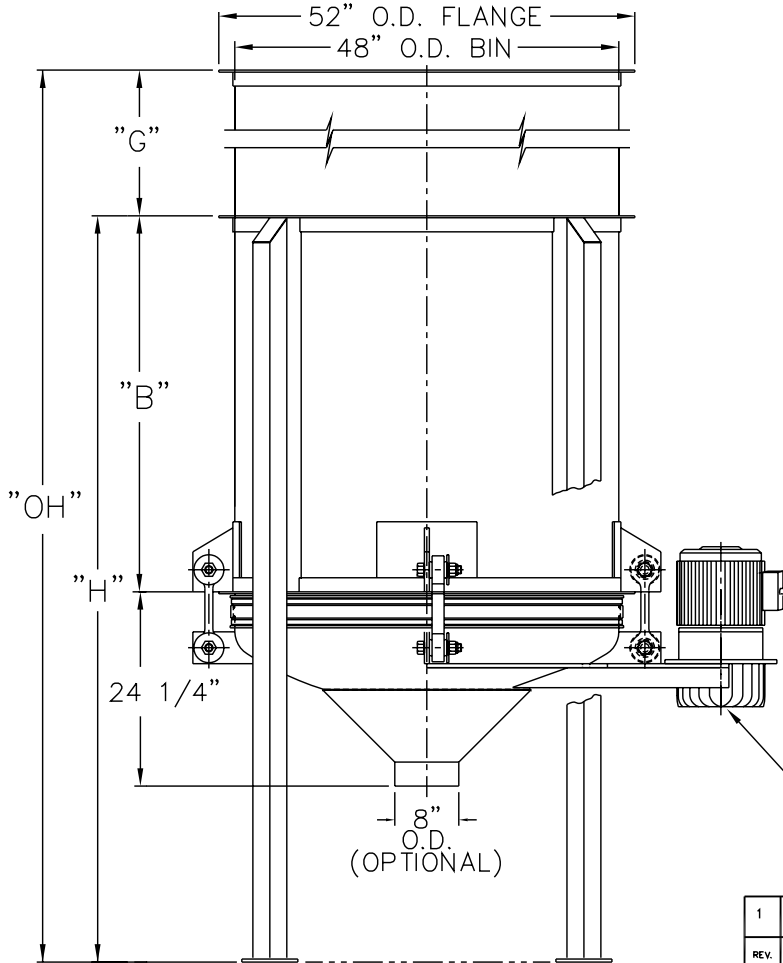


NOTES :

- 1 - CONTACT MATERIAL : CARBON STEEL, 304 STAINLESS STEEL OR 316 STAINLESS STEEL.
- 2 - GYRATOR MOTOR TO BE 2 HP, 1750 RPM, TEFC 230 OR 460/3/60.
- 3 - ALL ELECTRICAL CONNECTIONS TO BE FLEXIBLE.
- 4 - ALL CONNECTIONS TO LIVE BOTTOM BIN TO BE FLEXIBLE.



MODEL NO.	CAPACITY CU.FT.	"B"	"H"	"G"	"OH"
LBB 4-50	50	42"	88 1/4"	—	88 1/4"
LBB 4-75	75	47"	93 1/4"	19"	112 1/4"
LBB 4-100	100	47"	93 1/4"	40"	133 1/4"

THE RECIPIENT OF THIS DOCUMENT AGREES NOT TO REPRODUCE, COPY, TRANSMIT OR USE THIS DOCUMENT AND/OR THE INFORMATION CONTAINED IN THIS DOCUMENT IN WHOLE OR IN PART, FOR ANY PURPOSE, EXCEPT WITH THE WRITTEN PERMISSION OF VIBRA SCREW INCORPORATED.

DO NOT SCALE PRINT

UNLESS OTHERWISE SPECIFIED DIMENSIONS ARE IN INCHES

TOLERANCES:
 .XX = ±.01
 .XXX = ±.005
 FRACTIONAL = ±1/32"
 ANGULAR = ±1/2"
 BREAK SHARP EDGES .005-.015
 ALL SMALL FILLETS .020-.040R.

Vibra Screw Incorporated
 755 Union Blvd. Totowa, N.J. 07512-2207

TITLE 4 - 50 TO 100 LIVE BOTTOM BIN CENTER FLAT STOCK CROSSMEMBER AND 3K GYRATOR

SCALE 1=12

CAD FILE NAME LBB /STDASSY/17989-SD_4_50_100_3K

DWG. NO. 17989-SD

REV. NO. 1

REV.	DESCRIPTION	DWN. BY DATE	CHK. BY DATE	APP. BY DATE	ELEC. APP. DATE
1	WEBSITE DRAWING	MJM 6/30/01			