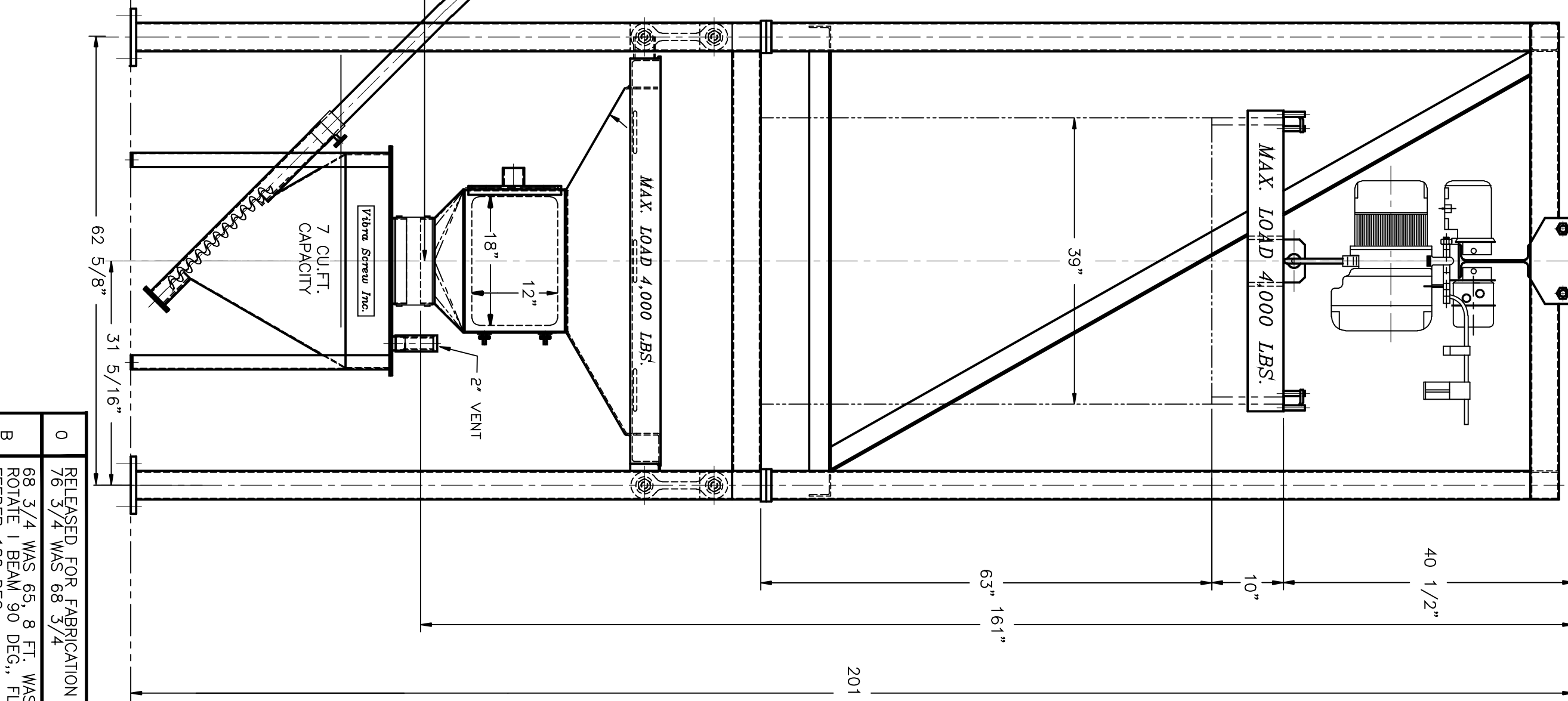
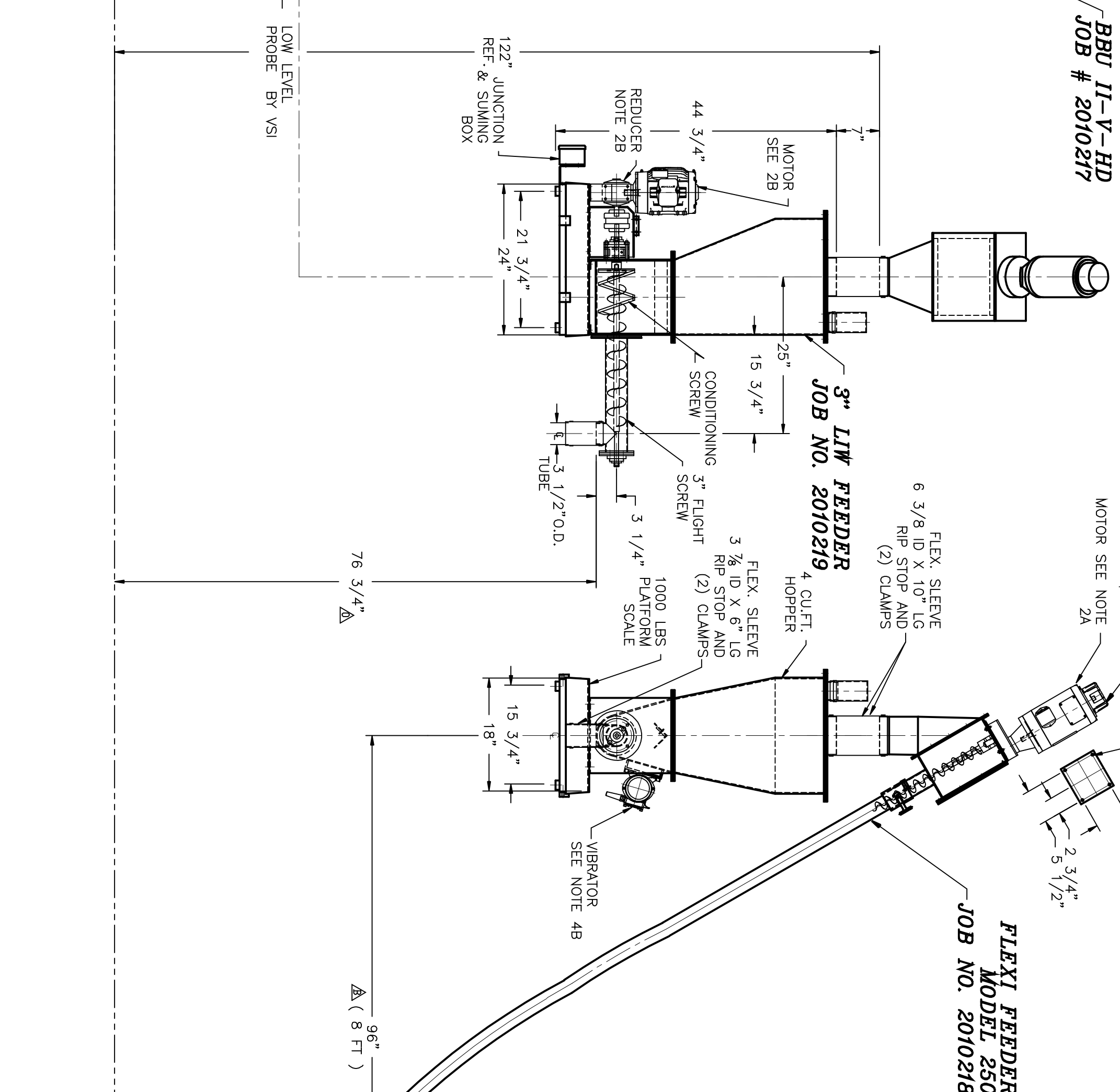
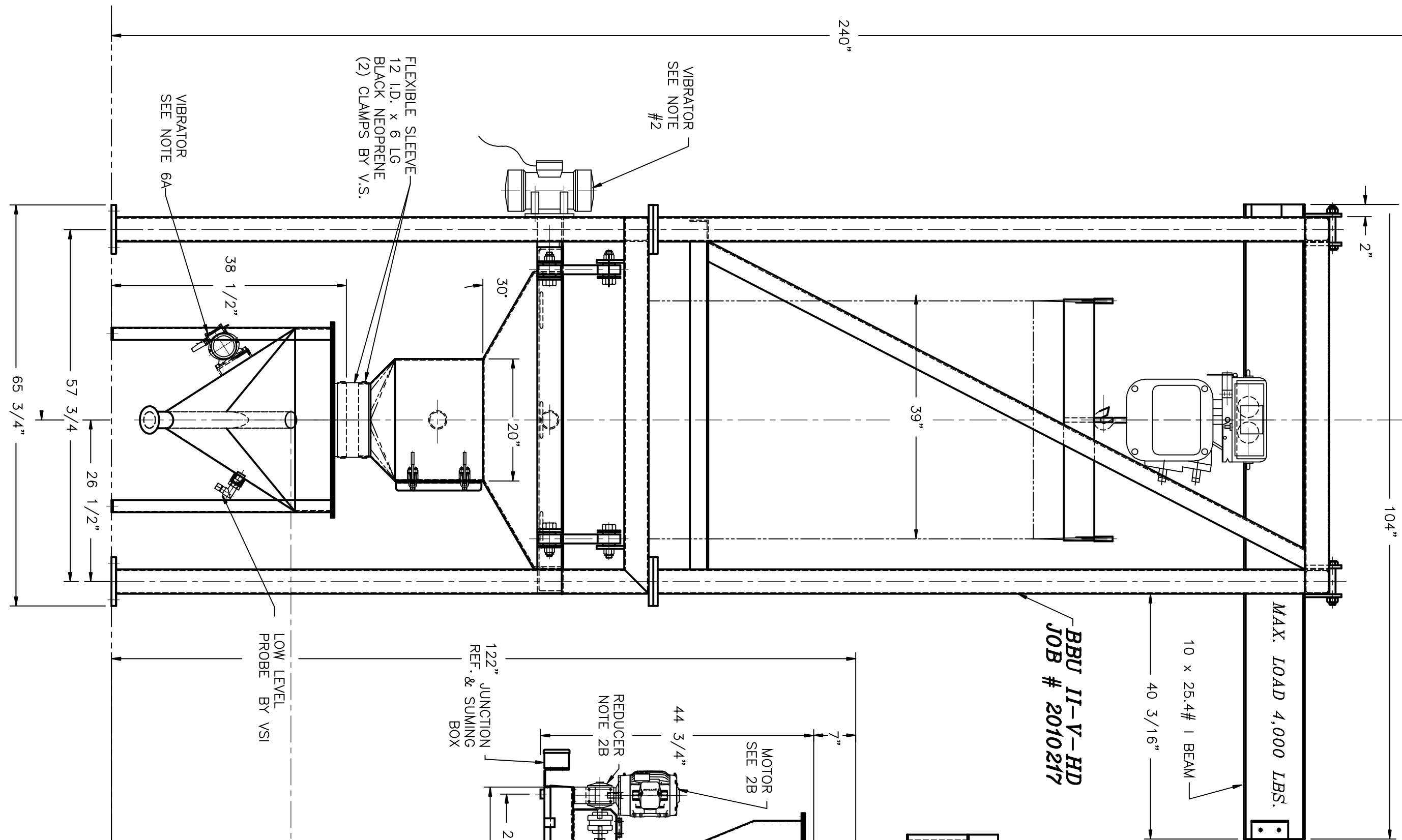
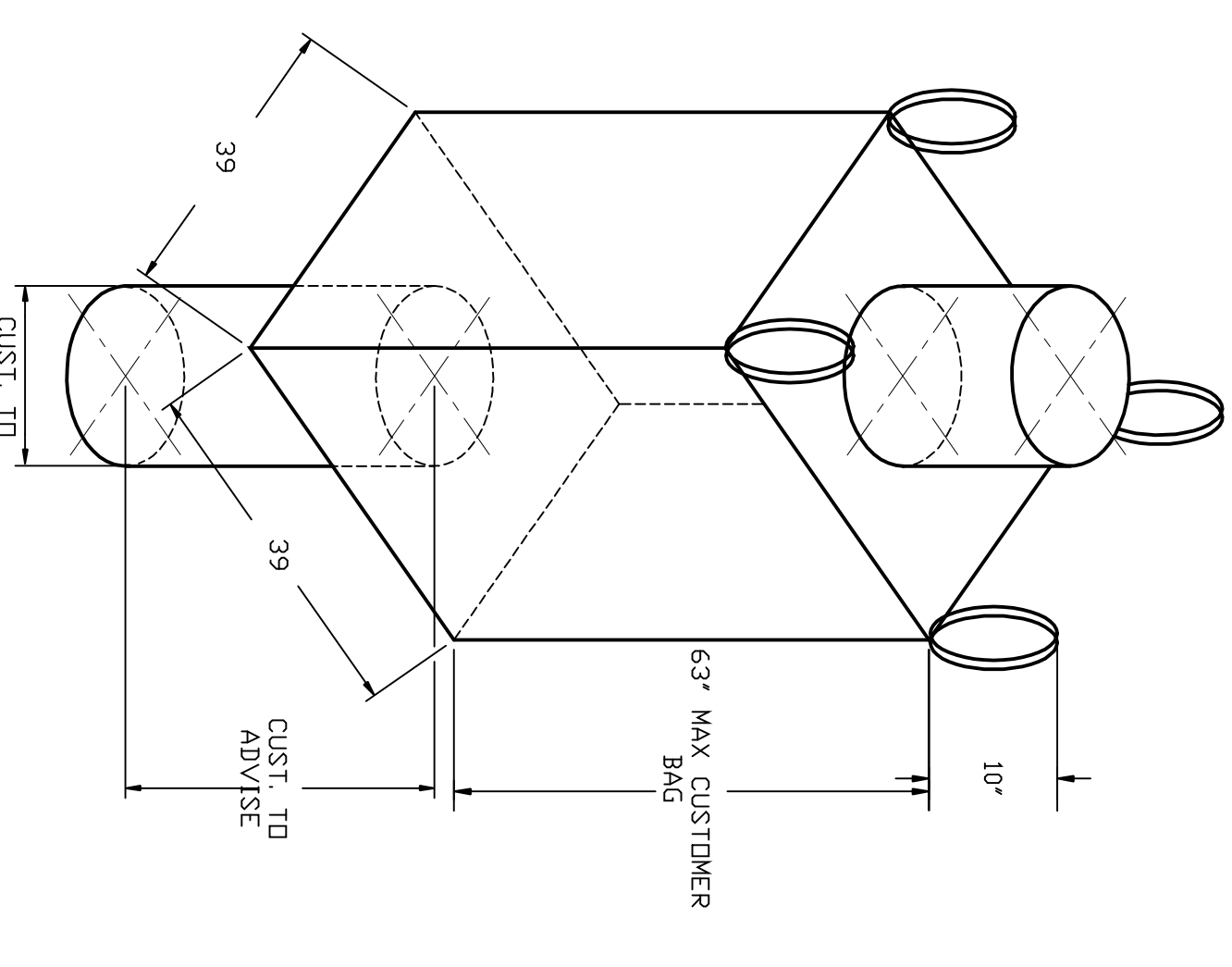
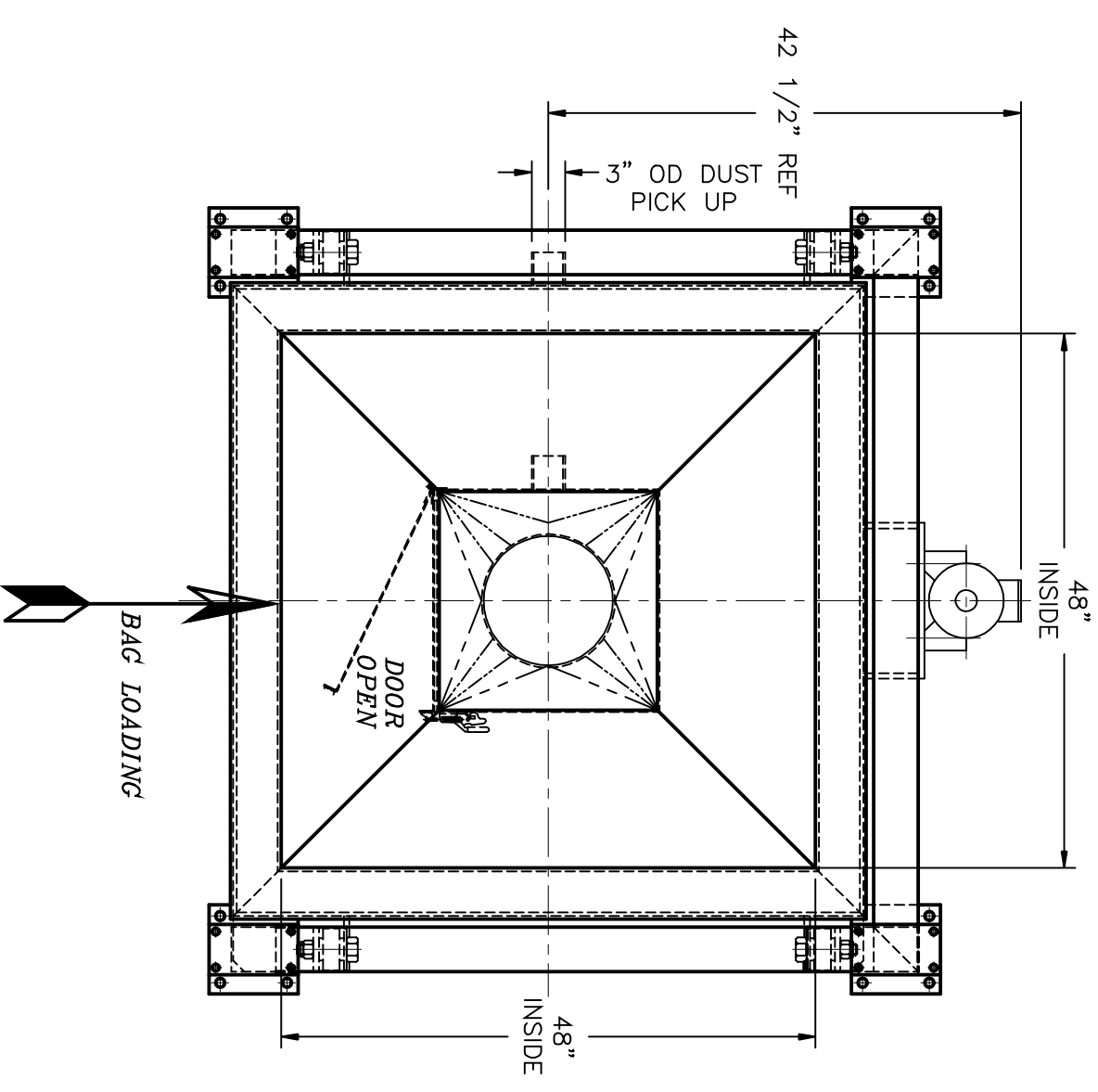
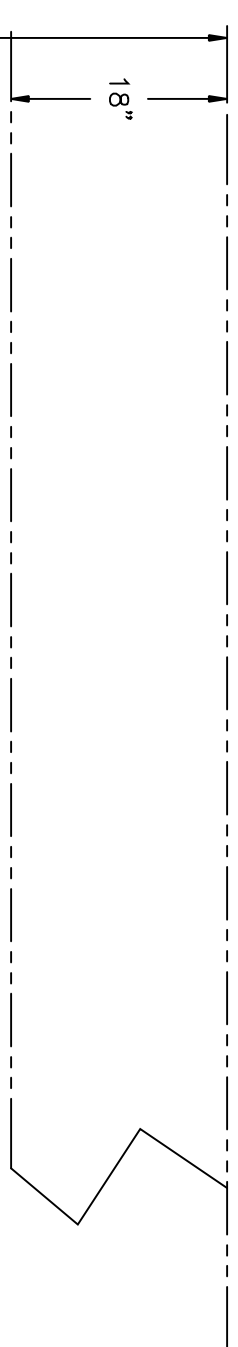


APPLICATION DATA	
MATERIAL	PROTEIN-SOY POLYMER
BULK DENSITY	33 PCF
BATCH SIZE	100 LBS IN 5 MIN
MOISTURE	NIL
TEMPERATURE	AMBIENT
PRESSURE	ATMOSPHERIC
PARTICLE SIZE	CUSTOMER TO SPECIFY



- FULL BULK BAG WEIGHT..... LBS ADVISE
- BULK BAG HAS INTERNAL LINER
- LINER IS ATTACHED TO BULK BAG
- LINER IS NOT ATTACHED TO BULK BAG

NOTES FOR BBU-II-V-HD # 2010217

1. CONTACT MATERIAL - CARBON STEEL.
2. VIBRATOR MOTOR - 2/3 HP, VES-18, 115V/1PH/60V.
3. ALL ELECTRICAL CONNECTIONS AND HOISTS MUST BE FLEXIBLE.
4. ALL ELECTRICAL HOISTS AND TROLLEYS MUST BE PROPERLY SECURED IN PLACE BEFORE USE.
5. BAG UNLOADER MUST BE PROPERLY SECURED IN PLACE BEFORE USE.
6. 2 TON ELECTRIC HOIST AND TROLLEY, TENV, 460V/3PH/60V, 14 FT/MIN. LIFTING SPEED.
7. BAG SIZE : 39" x 39" x 63" HIGH WITH 10" LG STRAPS.
8. SANDBLAST ALL CARBON STEEL SURFACES AND PAINT WITH GREY ENAMEL, 2-3 MILS DFT.

NOTES FOR FLEXY FEEDER # 2010218

- 1A - CONTACT MATERIAL : CARBON STEEL AND UHMW/PE
- 2A - MOTOR : 1 HP, TENV, 143 TC FRAME, 460V/3PH/60HZ MOD Y536 MOUNTED ON TMMO -2-3-140 REDUCER
- 3A - ALL ELECTRICAL AND MECHANICAL CONNECTIONS TO FLEXY FEEDER TO BE FLEXIBLE
- 4A - SANDBLAST CARBON STEEL SURFACES AND PAINT EXTERIOR WITH GREY ENAMEL, 2-3 MILS DFT.
- 5A - INTERIOR COAT WITH VEGETABLE OIL.
- 6A - VIBRATOR MODEL VE 3 3/8/120, 460V/3PH/60HZ.

NOTES FOR LHM FEEDER 2010219

- 1B - CONTACT MATERIAL: CARBON STEEL.
- 2B - DC MOTOR: 1 HP, TEFC, 56C FRAME, 90 VA, MODEL Z612.
- 3B - SPEED REDUCER BMO 818, 10: 1 RATIO.
- 4B - VIBRATOR MOTOR : VE1 3/8/120, 1/4 HP, 115V/1PH/60V.
- 5B - CONTROLLER SEE ELECTRICAL DRAWINGS.
- 6B - SANDBLAST CARBON STEEL SURFACES AND PAINT EXTERIOR WITH GREY ENAMEL, 2-3 MILS DFT.
- 7B - INTERIOR COAT WITH VEGETABLE OIL.

REV.	DESCRIPTION	DATE	BY	APP.	DATE
0	RELEASED FOR FABRICATION	11/23/10	MJM		
A	RELEASED FOR APPROVAL	11/01/10	MJM		

DO NOT SCALE PRINT
UNLESS OTHERWISE SPECIFIED
DIMENSIONS ARE IN INCHES

TOLERANCES:
XX = ±.01
XXX = ±.005
FRACTIONAL = ±1/32"
BREAK SHARP EDGES .005-.015
ALL SMALL FILLETS .020-.040R.
ALL FINISHED SURFACES 63-125
MICRO INCHES

Vibra Screw Incorporated
755 Union Blvd.
Totowa, N.J. 07512-2207

FOR CASCADE BOX BOARD GROUP

SCALE: 3/4"=1'
DWG. NO. AS-D-2010217
REV. NO. 0

REV.	DESCRIPTION	DATE	BY	APP.	DATE
0	RELEASED FOR FABRICATION	11/23/10	MJM		
A	RELEASED FOR APPROVAL	11/01/10	MJM		