

# VIBRA SCREW INC.

## VersiFeeder MODEL VSF-1



The **Model VSF-1 Volumetric Feeder** is a simpler, lower cost version of Vibra Screw's highly successful and proven Versifeeder. It has a foot mounted design with motor and gear reducer supported directly off the feeder trough. This eliminates the need for a separate support base and permits greater installation versatility with easy disassembly for cleaning. It retains the Versifeeder's popular modular design, enabling a single unit to adapt to the broadest range of feeding applications:

- A standard feeder with static hopper, trough and feed screw for free flowing materials.
- An agitator conditioner feeder with secondary trough conditioning screw for semi-free flowing materials.
- A vibrated feeder with Vibra Screw's controlled vibration design for non-free flowing materials.
- 

Designs can be upgraded in the field as materials or conditions change.

Typical feed accuracies are +/- 1-2%. Variable speed is provided by AC or DC controllers.



**Vibra Screw® Inc.**



### Materials of Construction

- Carbon Steel
- 304 or 316 Stainless Steel
- Special alloys

### Hopper

- 1.5 Ft<sup>3</sup> Standard Volume
- 3.0 - 5.0 Ft<sup>3</sup> Optional Volume

### Discharge (screw size)

- 0.75" to 6.0" Diameter Helix, 304 Stainless Steel
- Wire type or solid flight depending on application
- Progressive Pitch

### Volumetric throughput

0.1 to 600 ft<sup>3</sup>/hr depending on screw size

### Turndown

- 20:1 from Maximum Capacity with DC Motor/PWM Drive
- 10:1 from Maximum Capacity with AC Motor/VFD

Material Conditioner/Overwrap by Concentric Overwind Helix

(Note: Overwind Does Not Have Separate drive. It Rotates at Same RPM As Helix.)

### Drive Components

#### Standard

- 0.5 - 2.0 HP DC, TEFC Motor, 1750 RPM Right-Angle Gear Reducer, 10:1 Reduction

#### Alternate

- 1.0-3.0 HP Inverter Duty AC, TEFC Motor, 1750 RPM Right-Angle Gear Reducer, 10:1 Reduction (Standard)

### Controls

- SCR-DC Motor Speed Controller

#### Alternate

- AC Variable Frequency Controller
- LED Status Indicators
- Start/Stop Switch
- Potentiometer Speed Control 0-100%
- NEMA 4 Enclosure
- NEMA 4X enclosure (Optional)
- Start/Stop Switch
- Remote Analog Setpoint Input (Optional)
- Remote/Local Switch (optional)

#### Standard Power Requirements

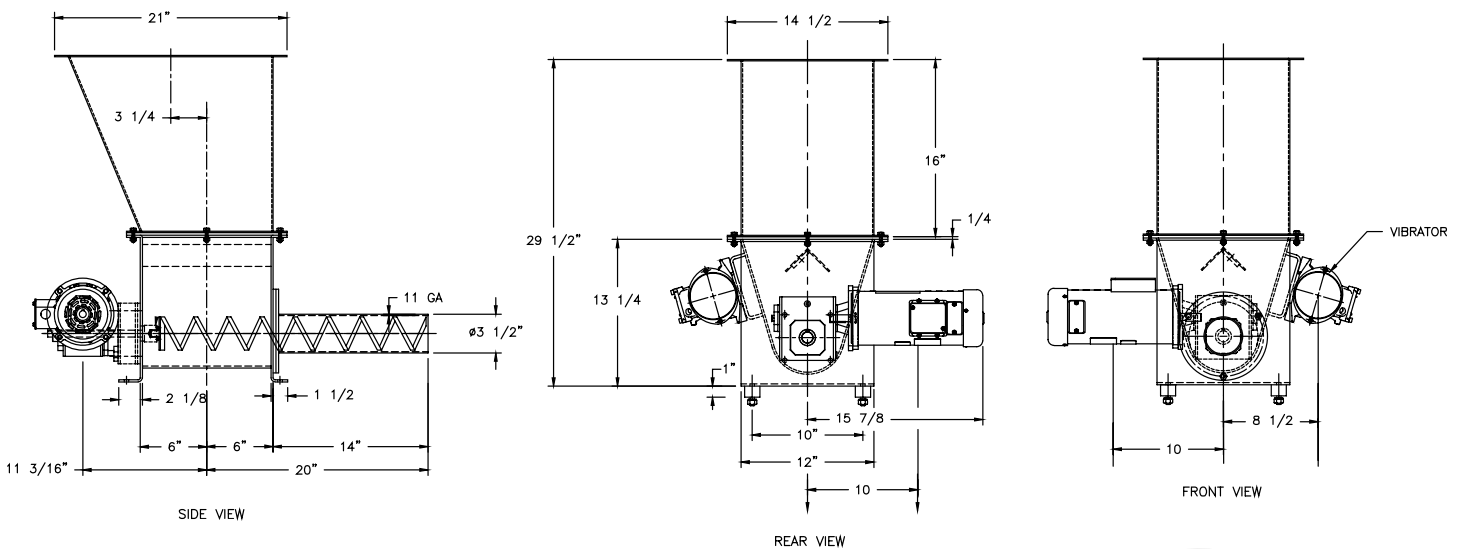
- 115/230 Volts, 1 Phase, 60 Hertz (DC)
- 230/460 Volts, 3 Phase, 60 Hertz (AC)
- 15 Amp Service

### Accuracy

± 1.0- 2.0% based on 30 , 1 minute samples at 2 sigma

#### Available Options

- Hopper Vibrator
- Lift Off Cover with Handle
- Bolt-On Hopper Cover with Infeed and Vent Connection Stubs
- Spout Extensions
- Down Spout
- Hazardous Area Electrical Components
- Non-Stick Coatings
- On-Off Cycle Timer Control
- Glass Beaded Finish
- Sanitary Design



The most trusted name in dry solids processing



### THE VIBRA SCREW GUARANTEE

If your Vibra Screw equipment doesn't perform in the service for which it was sold, we'll refund your money. Ask any other equipment manufacturer to put that in writing.

No time limits. No conditions.