

# VIBRA SCREW INC.

## VersiFeeder



**Vibra Screw® Inc.**

VF 3 31 23



# VersiFeeder Volumetric Feeder



Standard VersiFeeder

## Modular Design

The Vibra Screw VersiFeeder is the first volumetric feeder with modular design, enabling a single unit to adapt to the broadest range of feeding applications.

- **A Standard Feeder**, with static hopper, trough and feed screw for free-flowing materials.
- **An Agitator Conditioner Feeder**, with secondary trough conditioning screw for semi-free flowing materials.
- **A Vibrated Feeder**, using Vibra Screw's controlled vibration design for non-flowing materials.

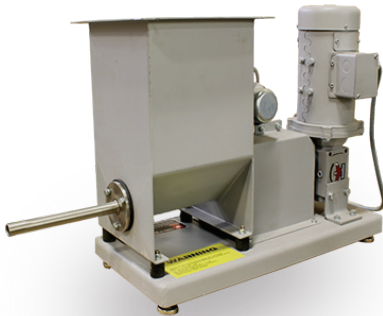
The Versifeeder permits selection of the most economical design required for a specific application, with the unequaled ability to upgrade the design as materials or characteristics change. You'll always achieve accuracies of  $\pm 1-2\%$  whether with pellets, flakes, powders or fibers.

## Standard or Sanitary from 0.14 to 600 ft<sup>3</sup>/hr

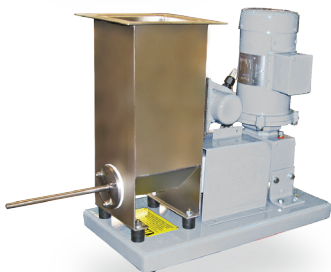
The Versifeeder is available in screw sizes from 1" to 6" and sanitary construction in all sizes. Whether you feed chemicals, foods or pharmaceuticals, Versifeeder's wide range of models and options meet the need.

## Easy Clean, Tool-Less, Rear Seal Removal

The Vibra Screw Versifeeder offers optional rear screw removal, permitting cleaning and screw size changes away from the process side. Disassembly is accomplished without tools and in a matter of minutes. All driveline components, gaskets and seals maintain their alignment and integrity during disassembly and reassembly. The screw can also be removed from the front if desired.



Mini VersiFeeder, 1.0 ft<sup>3</sup> hopper



Mini VersiFeeder, 0.5 ft<sup>3</sup> hopper



6" Sanitary VersiFeeder



Sanitary VersiFeeder



VersiFeeder with  
Trough Cover, no hopper

Reversing VersiFeeder

## How Controlled Vibration Improves Your Operation

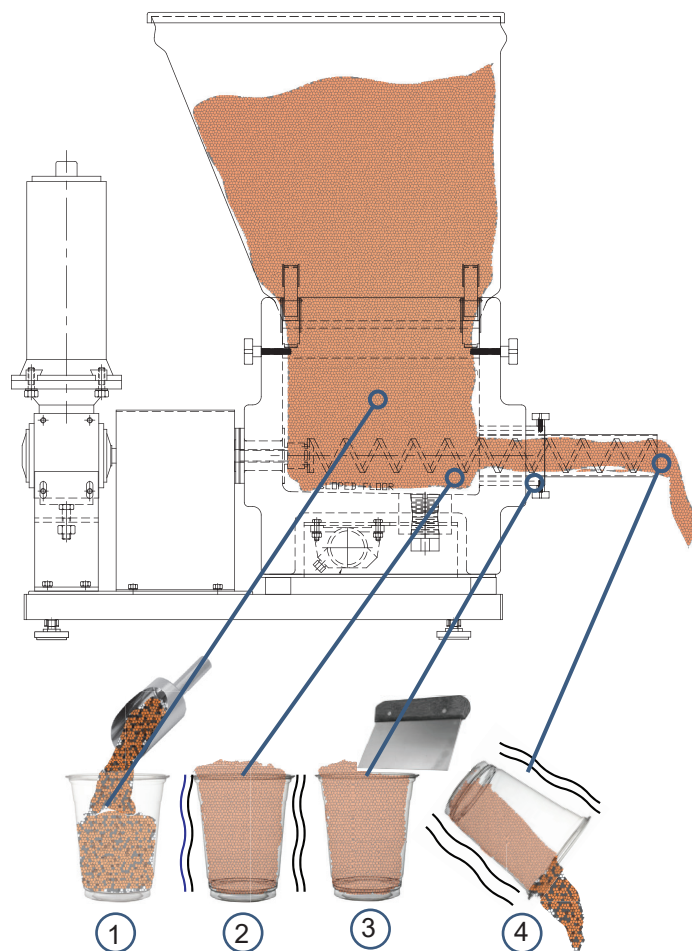
The operating principle of a vibrating Screw Feeder can be compared with the repetitive filling and emptying of cups. Most accurate filling occurs when the cup is filled with material (1), vibrated to obtain uniform density (2), and the excess struck off (3). On emptying (4), vibrating the cup also ensures complete release of the material.

In our vibrating Screw Feeders, the same process occurs. Material fills the screw flights in the trough area

- (1) is vibrated to a uniform density
- (2) and is struck off
- (3) as it enters the metering tube. Vibration of the metering tube and screw
- (4) ensures complete release of material at the discharge end.

Successive weighing of material samples will show volumetric accuracies of  $\pm 1\%$ . The Loss-In-Weight controller easily refines this; providing gravimetric accuracies as great as  $\pm \frac{1}{4}\%$ .

The vibration also greatly reduces feed pulsation. At discharge, it produces a precise cutoff of flow at the end of the batch cycle without material overrun. Irregular free-fall of material overrun is the greatest source of batching error. The controlled vibrating Feeder eliminates this error and greatly enhances accuracy.



Standard VersiFeeder with  
5 ft<sup>3</sup> hopper



Standard VersiFeeder with  
free standing 8 ft<sup>3</sup> hopper

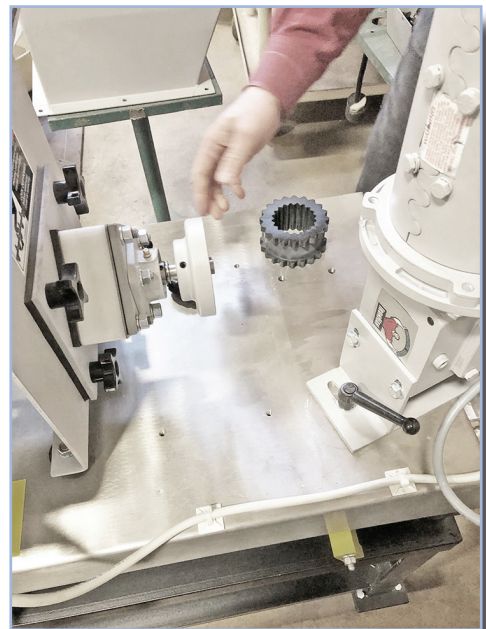
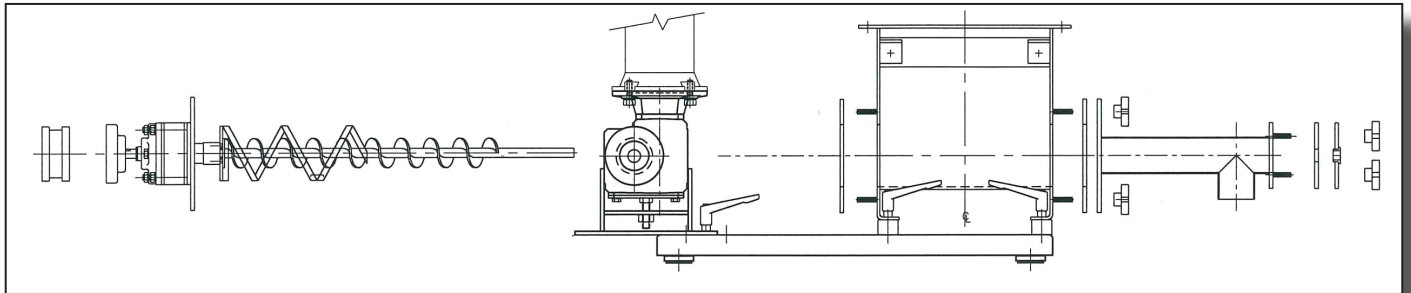


VersiFeeder with  
Bag Dump Station



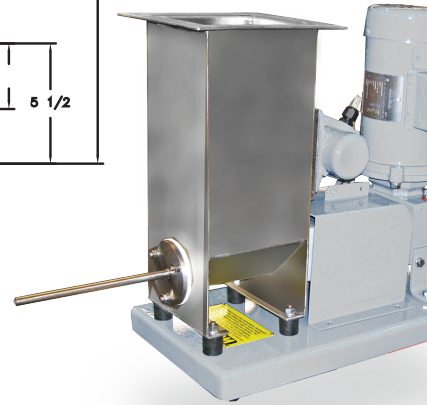
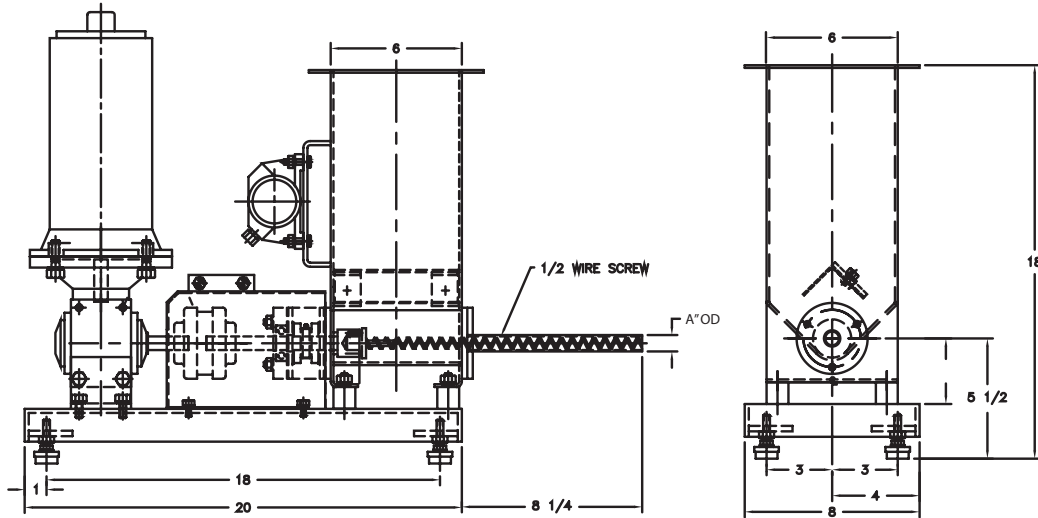
## Easy Clean, Tool-Less, Rear Seal Removal

The Vibra Screw VersiFeeder offers optional rear screw removal, permitting cleaning and screw size changes away from the process side. Disassembly is accomplished without tools and in a matter of minutes. All driveline components, gaskets and seals maintain their alignment and integrity during disassembly and reassembly. The screw can also be removed from the front if desired.

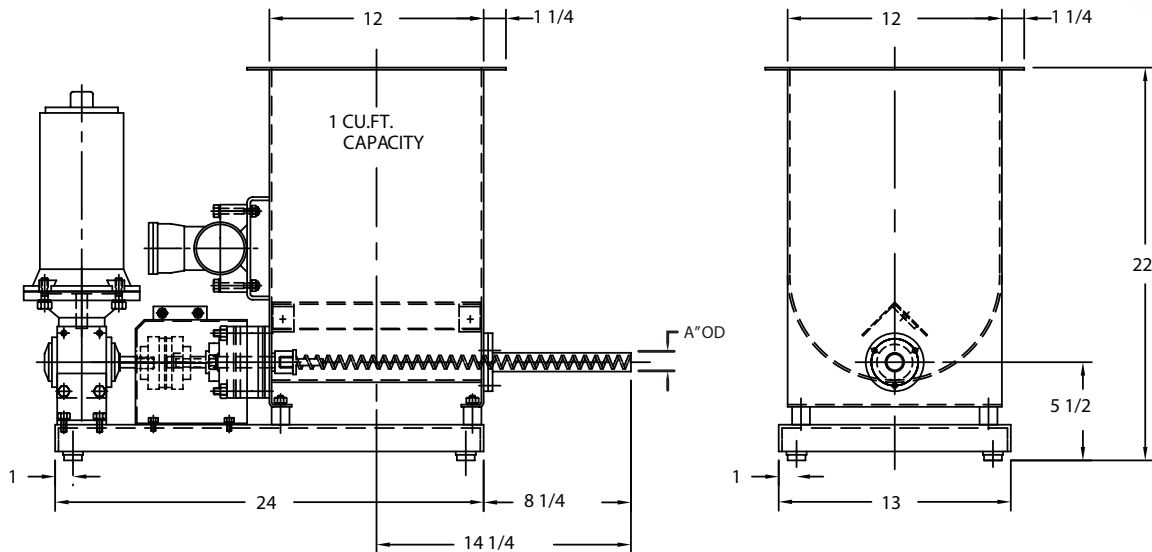




MINI VersIFeeder  
 1/4 ft<sup>3</sup> capacity hopper  
 Screw Sizes from 1/4" to 0.75"

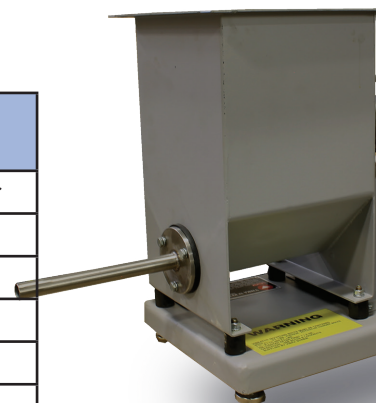


MINI VersIFeeder  
 1.0 ft<sup>3</sup> capacity hopper  
 Screw Sizes from 1/4" to 1.0"

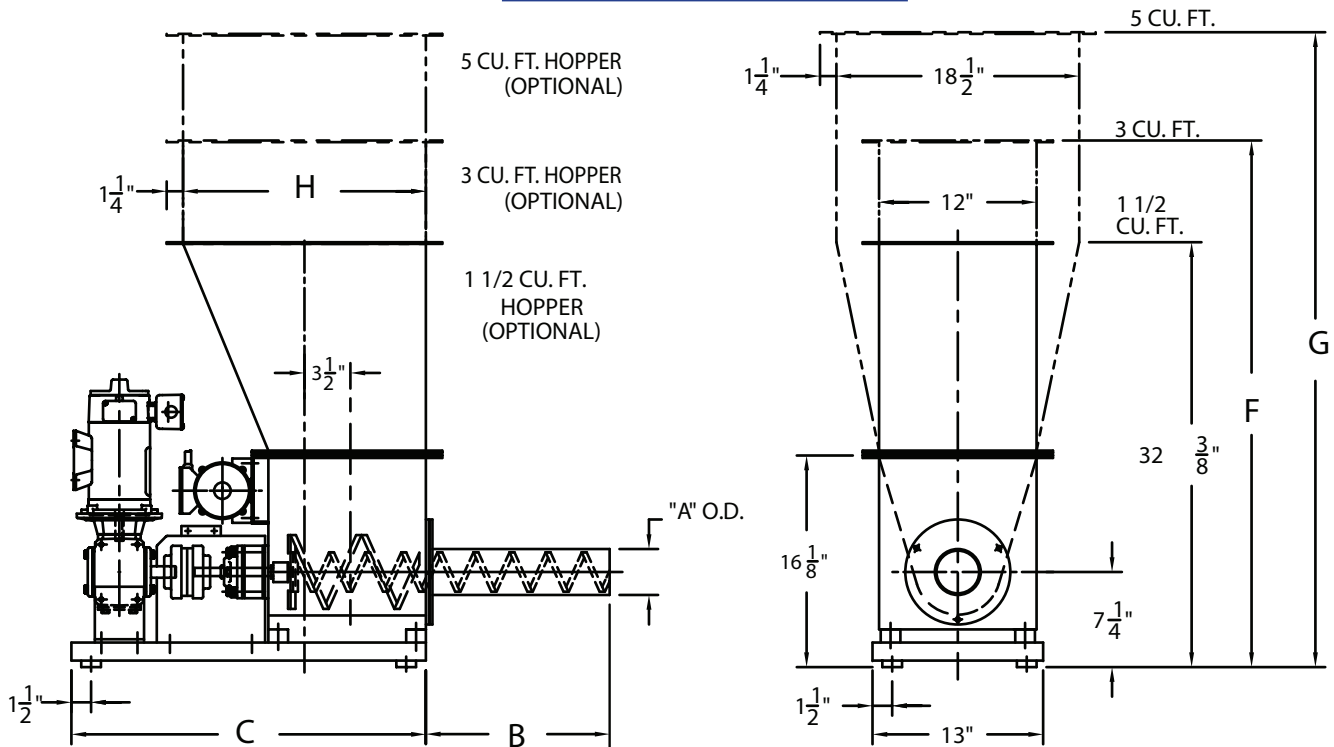


SCREW SIZE	DIM "A"
1/4"	3/8"
3/8"	5/8"
1/2"	3/4"
5/8"	7/8"
3/4"	1.050"
1.0"	1.25"

SCREW SIZE	VOLUMETRIC RATE CAPACITY
1/4"	0.00037 to 0.037 ft <sup>3</sup> /hr
3/8"	0.01 to 0.10 ft <sup>3</sup> /hr
1/2"	0.024 to .24 ft <sup>3</sup> /hr
5/8"	0.052 to 0.52 ft <sup>3</sup> /hr
3/4"	0.1 to 1.0 ft <sup>3</sup> /hr
1.0"	0.28 to 2.80 ft <sup>3</sup> /hr



**VersiFeeder**  
**1.5 to 5 ft<sup>3</sup> capacity hopper**  
**Screw Sizes from 1.0" to 6.0"**



**VERSIFEEDER DIMENSIONS and FEED RATES**

Screw dia	"A" O.D.	"B"	"C"	"F"	"G"	"H"	FT3/Hr	M3/Hr
1"	1 1/2"	8 1/4"	27"	40 3/8"	48 3/8"	18 1/2"	2.8	0.1
1 1/2"	2"	8 1/4"	27"	40 3/8"	48 3/8"	18 1/2"	8.8	0.2
2"	2 1/2"	8 1/4"	27"	40 3/8"	48 3/8"	18 1/2"	23	0.6
3"	3 1/2"	14"	27"	40 3/8"	48 3/8"	18 1/2"	74	2.0
4"	4 1/2"	14"	27"	40 3/8"	48 3/8"	18 1/2"	200	6.0
6"	6 5/8"	18"	33"	36 3/8"	40"	24 1/2"	600	17.0

**SPECIFICATION**

**Contact Materials**

- Carbon Steel
- 304 or 316 Stainless Steel
- Special Alloys

**Coatings**

- Standard external-enamel
- Optional external
  - epoxy
  - Corrosion resistant paints
  - Customer specified paint
- Standard Internal uncoated or machinery enamel
  - Optional internal
  - Epoxy paint
  - Teflon coating
  - Customer specified

**Food Grade Applications**

**Standard:**

- All internal seams continuously welded
- All welds ground smooth
- All internal surfaces polished, #4 finish
- Food grade gaskets and seals
- Material contact zone covers & frames equipped with quick disconnect fasteners for ease of cleaning

**Optional Features/Equipment**

- Vibrator on feed trough
- Conditioning screw in feed trough
- Hopper Cover with inlet opening and vent stub
- Feed Tube Down Spout

**Drives**

**Standard**

- DC/ SCR TEFC 115/1/60
- AC Inverter Duty / VFD 460/3/60

**Optional**

- Analog Signal

**Enclosures**

**Standard: TEFC**

**Optional:**

- Explosion Proof
- Chemical Duty
- Customer Specified



**VIBRA SCREW INC.**

755 Union Blvd Totowa, NJ 07512

973-256-7410

info@vibrascrew.com

www.vibrascrew.com

*The most trusted name in dry solids processing*

**THE VIBRA SCREW GUARANTEE**

If your Vibra Screw equipment doesn't perform in the service for which it was sold, we'll refund your money. Ask any other equipment manufacturer to put that in writing.

**No time limits. No conditions.**