



CONFECTIONARY



SNACK FOOD



PET FOOD



GRAINS



SPICES



PLASTICS



**VIBRA SCREW INC.**

*The most trusted name in dry  
solids processing*

## **SANITARY WEIGH BELT FEEDERS MODEL VMWT-100**



Rugged, Reliable, Accurate weighing of a wide  
range of materials

The Model VMWT-100 comes in two sizes, 12” and 24” wide belt and is designed to convey and feed a wide range of materials, from powder, grains, flakes and pellets. It can be used as an integrator to monitor material weight and rate flow (integrator, no control) or as a weigh feeder to precisely control material flow by weight into process.

Its cantilevered mechanical design provides for quick belt removal and easy maintenance. It is designed to eliminate material build-up, ensuring high accuracy and reliability. The unique weigh system reduces dead load and applies live load directly to two platform load cells. Load cells are externally mounted for easy access and maintenance.

**SPECIFICATION**

- Feed Rate:**
- 12” (304 mm)** wide weigh belt - up to 25,000 lbs/hr with a material bulk density of 50 lbs/ft³ (0.8 gr/cm³).
  - 24” (609 mm)** wide weigh belt - up to 50,000 lbs/hr with a material bulk density of 50 lbs/ft³ (0.8 gr/cm³).

- Material Density Range:**
- 10 to 100 lbs/ft³

- Pulleys:**
- 304 stainless steel, 4.0”, self tracking

- Cantilevered Frame**
- Side skirts and belt removal, no tools required

- Weight Measurement System:**
- Single precision strain gauge transducer., aluminum with optional stainless steel

- Speed Measurement System:**
- Optical pulse transmitter mounted to tail pulley.

- Motor:**
- 0.25-0.5 HP. 90 volt DC armature, permanent magnet, TENV, 115 VAC, 1ph, 50-60 Hz, continuous duty, Class B insulation
  - AC Gear Motor constant speed or Inverter Duty Motor 230-460 VAC, 3 ph, 50-60 Hz volts AC, TENV.

- Drive Reducer:**
- C faced coupled to motor, right angle worm & gear type, service factor 1.5, complies with A.G.M.A. standards.

- Turndown:**
- 20:1. from full scale. with variable speed belt

- Contact Material:**
- 304 Stainless Steel
  - Option: 316 Stainless Steel.

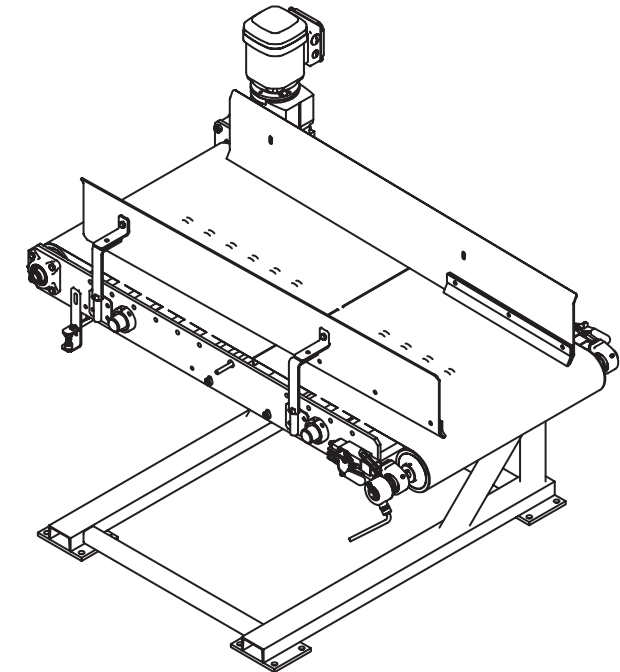
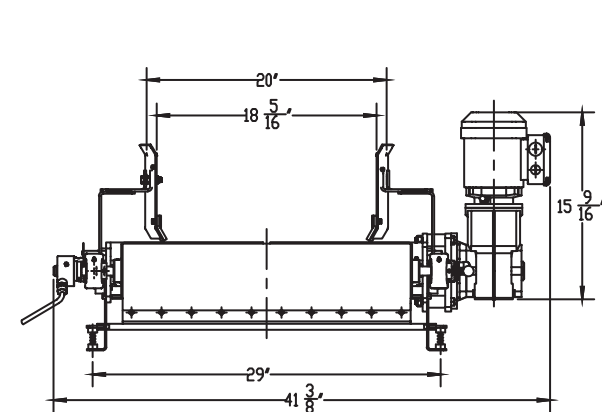
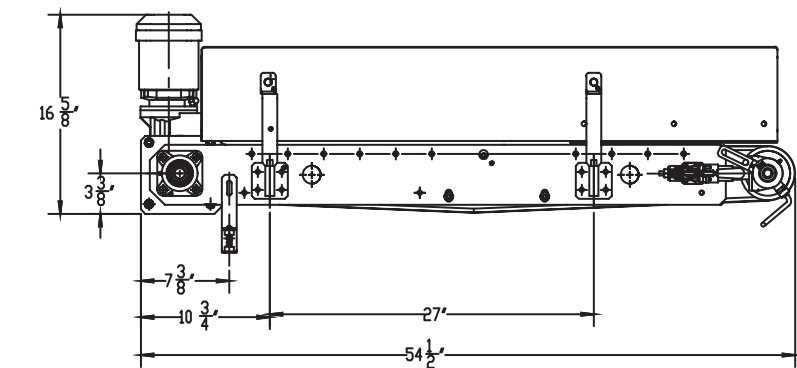
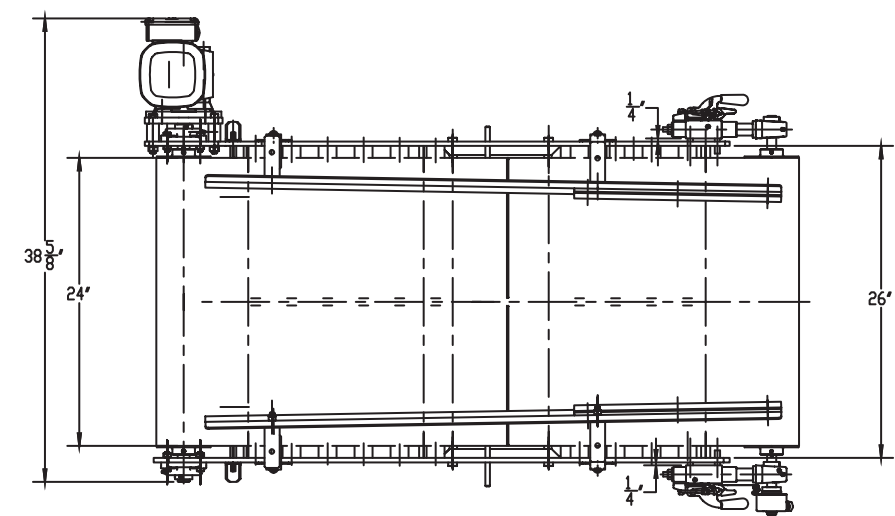
- Non-Contact Materials:**
- 304 Stainless Steel.
  - Option: 316 Stainless Steel.

- Temperature Limits:**
- Ambient 32°F-130°F (0°C-54°C). Material: 0°F to 250°F (-18°C -121°C).

- Belt:**
- Endless two ply polyester, FDA approved.

- Accuracy (Combined Error):**
- 0.25 to 1.0% of set rate (@ 2 sigma) based on a minimum sample of 1 minute or 2 circuits of the belt, which ever is greater.
  - ± 0.5 % of totalized weight based on a minumum sample of one minute or two circuits of the belt.

MODEL VMWT-100 Weight Belt



## Instrumentation Specification

- Large (W x H) 4.6 x 3.4 in 320 x 240 pixel backlit LCD graphical display
- NEMA Type 4X/IP66 stainless steel display enclosure
- Four bidirectional communication ports
- Rate and speed time displayed by the hour, minute or second
- Measurement displayed in feet or meters
- Unit of rate displayed in tons, pounds, kilograms, metric tons or long tons
- Digital I/O for totalizer
- Optional analog and alarm outputs
- For added security, integrator has the ability to be password protected
- Resolution:

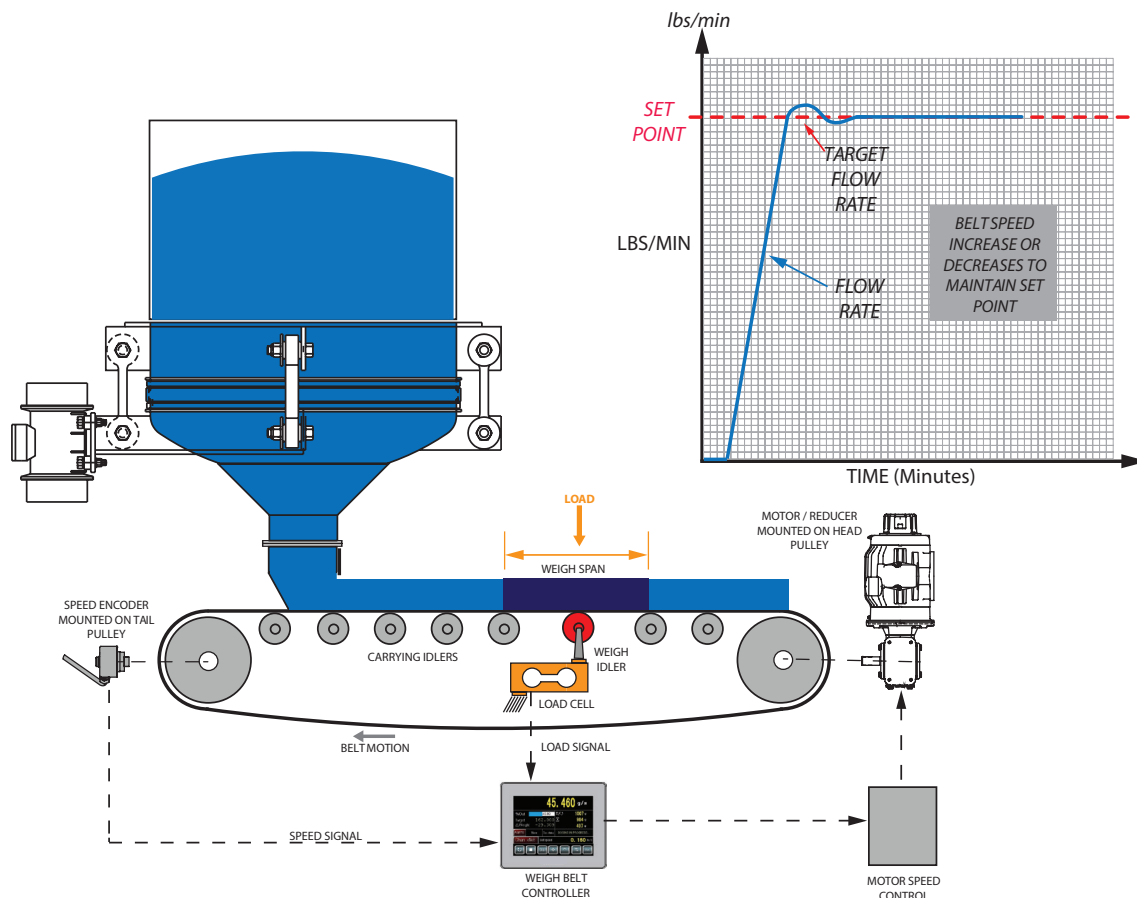
Internal Resolution: 8 million counts/8,000,000

Weight Display Resolution: 9,999,999

- Display:

(W x H) 4.6 x 3.4 in (116 x 86 mm)

320 x 240 pixel VGA liquid crystal display (LCD) module with adjustable contrast



**VIBRA SCREW INC.**

755 Union Blvd

Totowa, NJ 07512

973-256-7410

info@vibrascrew.com

www.vibrascrew.com